

# MITOCHONDRIA

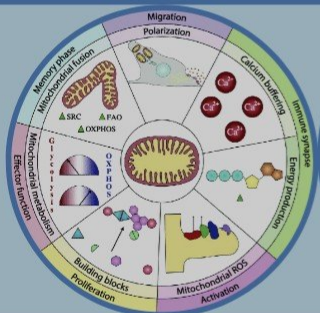
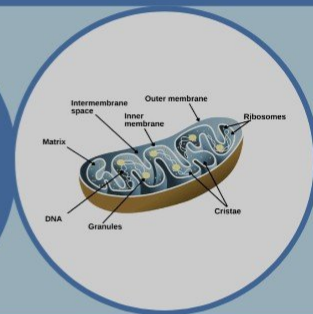


## Introduction:

MITOCHONDRIA ARE THE POWERHOUSE OF CELLS AS THEY GENERATE ENERGY FOR CELL FUNCTIONING.

## Mitochondria Structure:

OUTER MEMBRANE-INTER MEMBRANE-INNER MEMBRANE  
CRISTAE-MATRIX

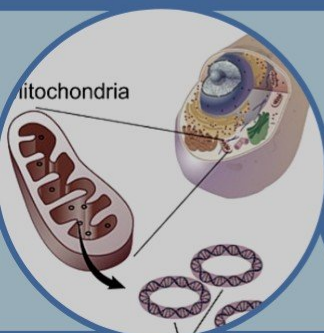
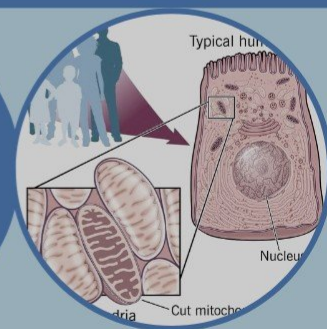


## Function of Mitochondria:

Energy generation-Cell Death-Heat production  
Storing calcium

## Mitochondrial Diseases:

including: Alzheimer's disease- Muscular dystrophy- Lou Gehrig's disease.  
Diabetes-Cancer



## Mitochondrial DNA:

Mitochondrial DNA is only a small portion of the DNA in a eukaryotic cell

*That's*  
Created by G11