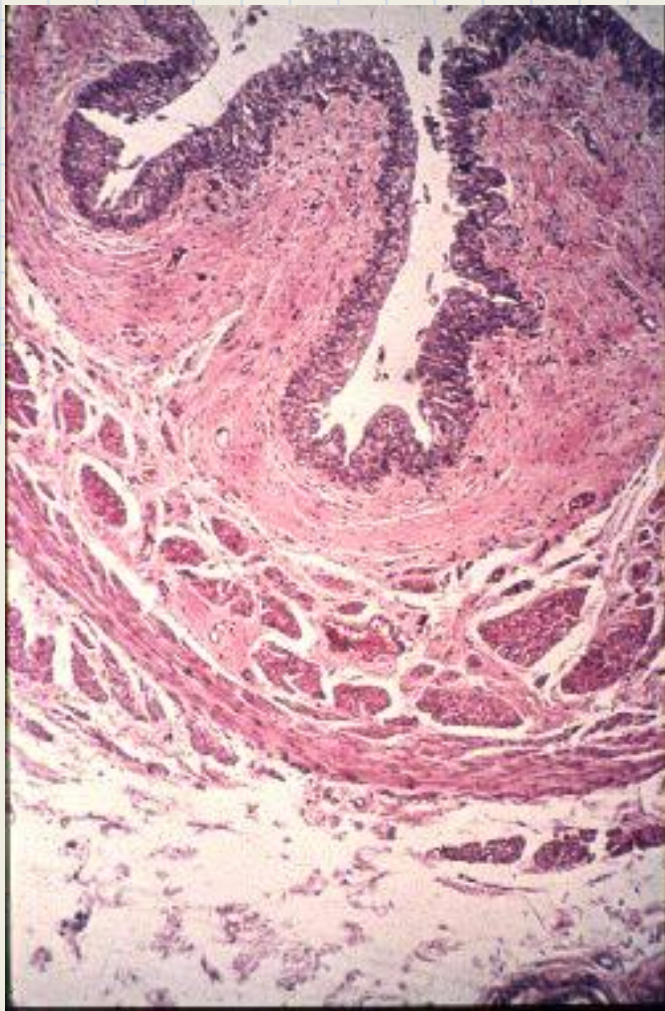




Urinary System

Micrograph Quiz



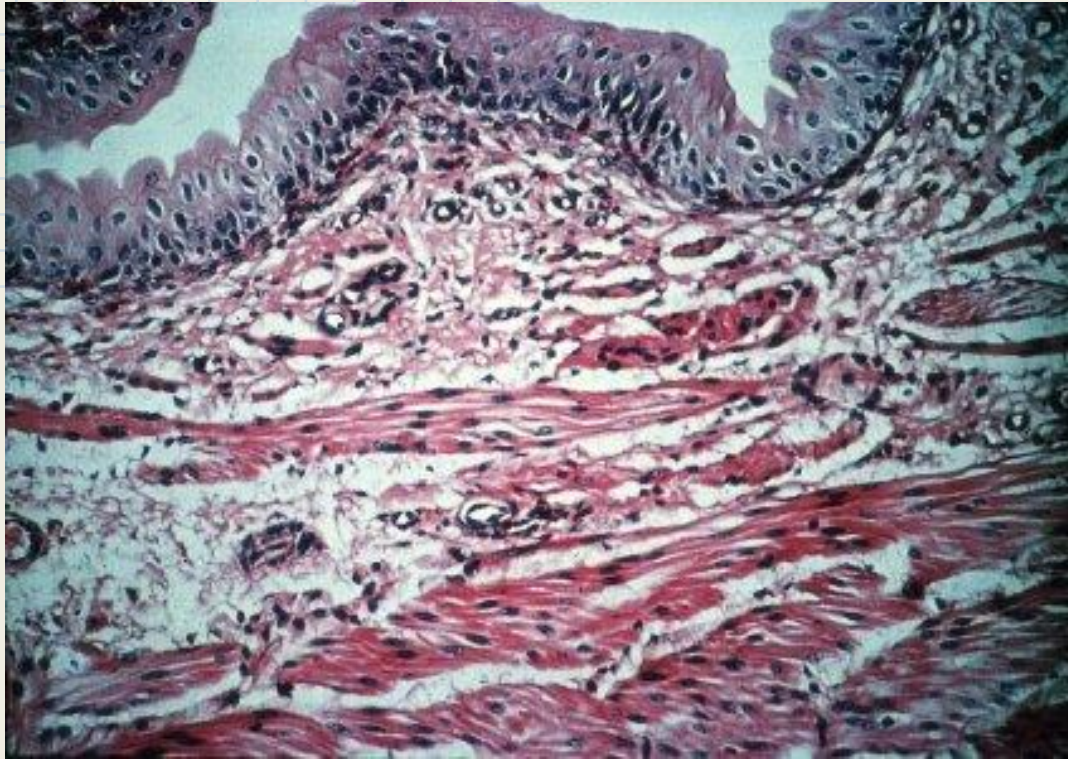


Identify the organ

What type of epithelium lines the organ?

What type of muscle is present in the wall?

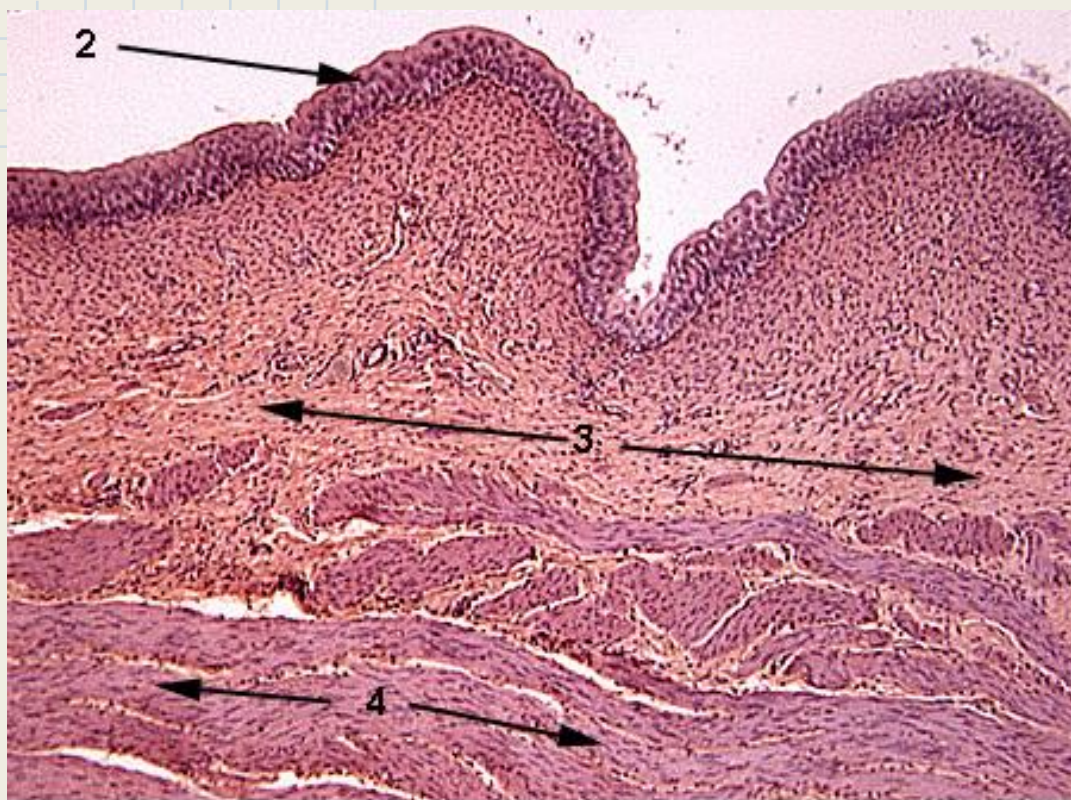
How is this muscle arranged?



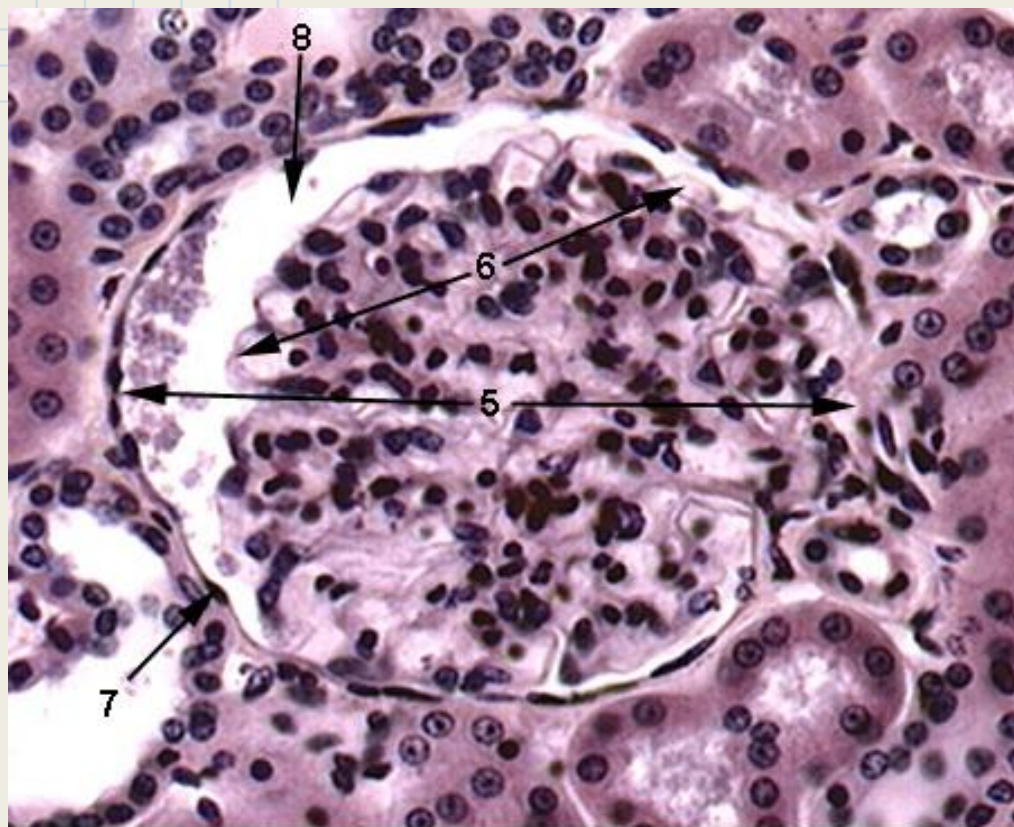
Identify the organ

What type of epithelium is shown here?

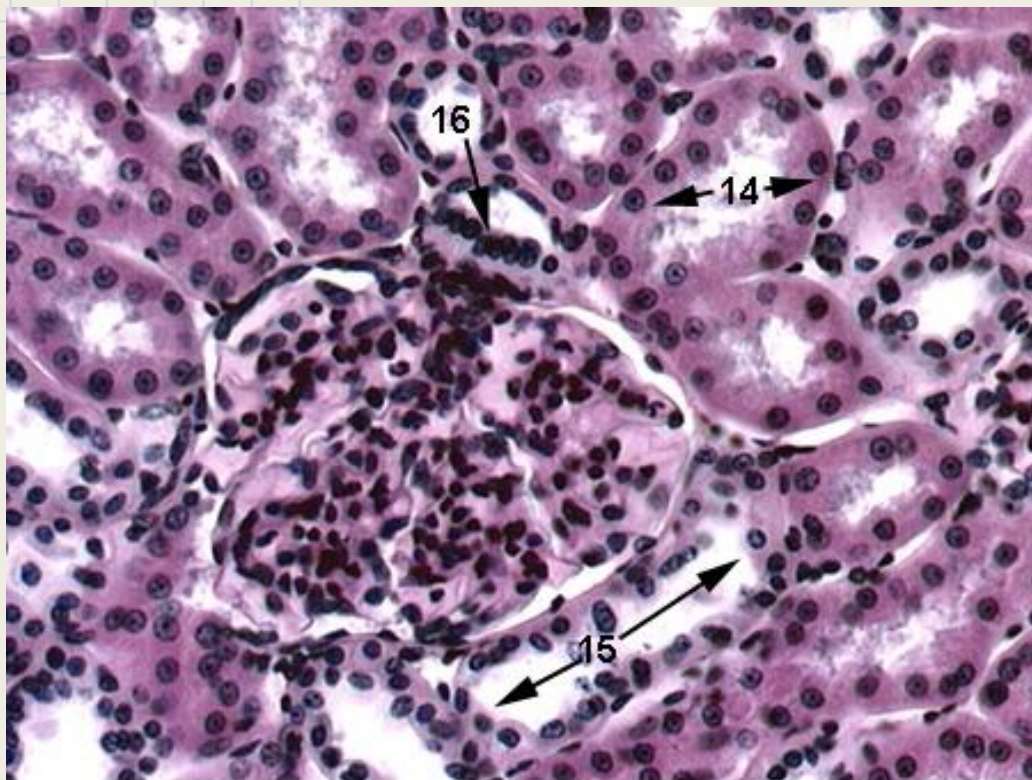
What deep pink stained structures occupy most of the lower half of the image?



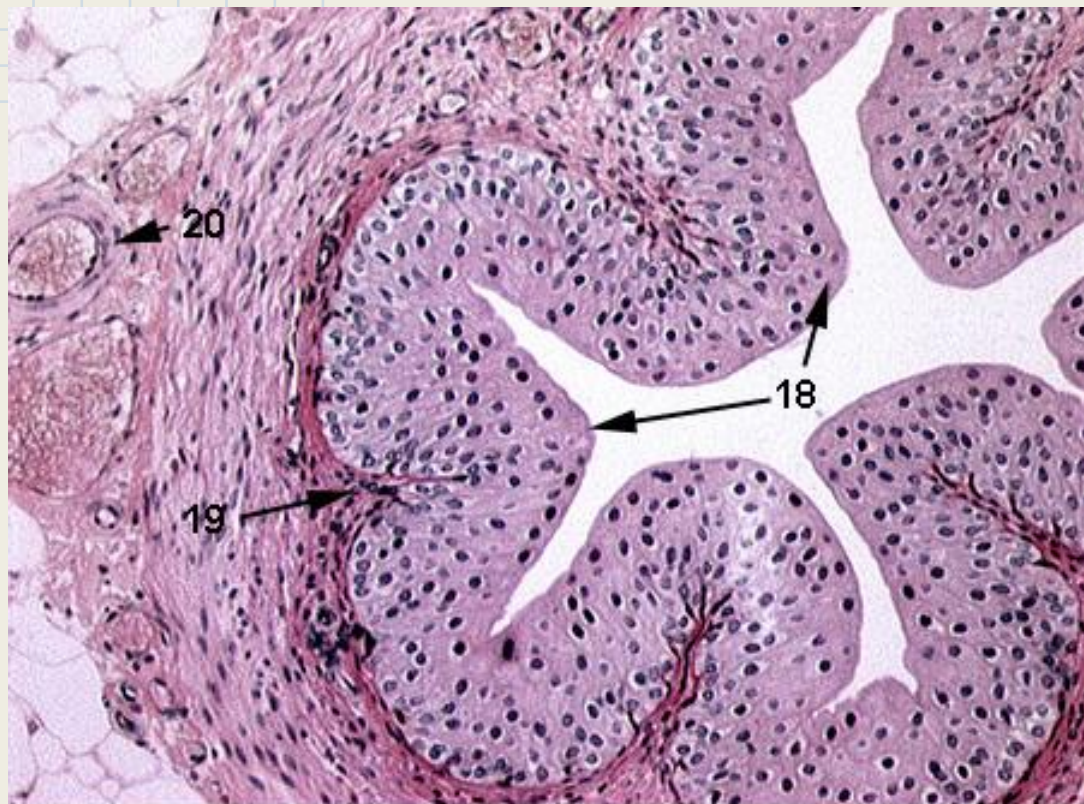
1. Identify this organ
2. Identify the epithelium
3. Identify the layer
4. Identify the tissue



5. Identify the entire structure indicated by the arrows
6. Identify the smaller structure indicated by the arrows
7. Identify the layer indicated by the arrow
8. Identify the space indicated by the arrow



13. Identify the region of the organ
14. Identify the tube
15. Identify the tube
16. Identify the structure indicated by the arrow



17. Identify this organ
18. Identify the epithelium
19. Identify the layer indicated by the arrow
20. Identify the structure indicated by the arrow

Answers:

Scope 1

1. Urinary bladder
2. Transitional epithelium
3. Submucosa
4. Smooth muscle

Scope 2

5. Renal Corpuscle
6. Glomerulus
7. Parietal epithelium of Bowman's Capsule
8. Bowman's space

Scope 3

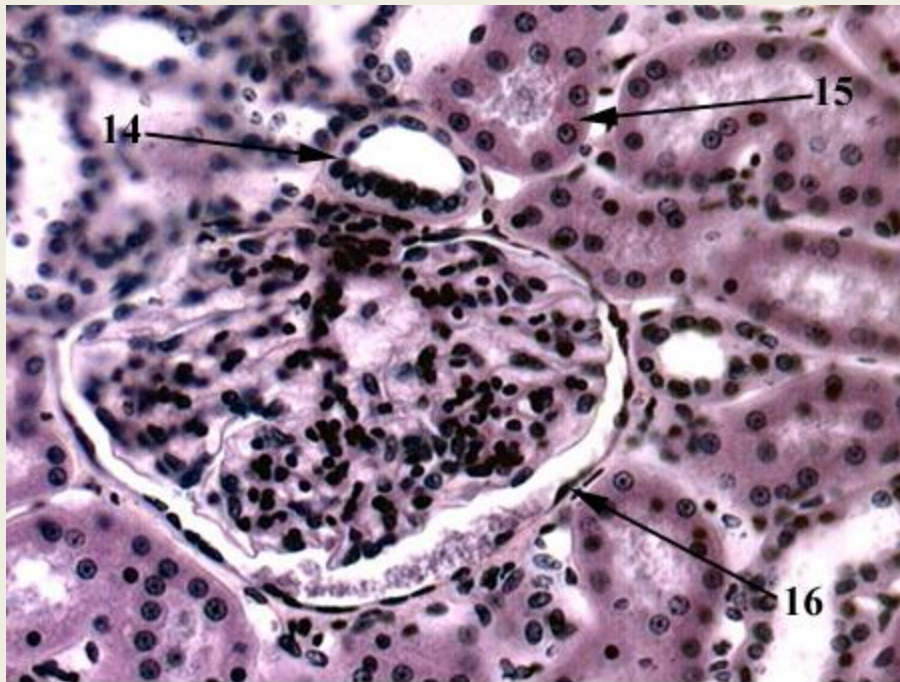
9. Medullary papillae
10. Ducts of Bellini
11. Renal Pelvis
12. Ureter

Scope 4

13. Kidney cortex
14. Proximal convoluted tubule
15. Distal convoluted tubule
16. Macula densa

Scope 5

17. Ureter
18. Transitional epithelium
19. Lamina propria
20. Arteriole



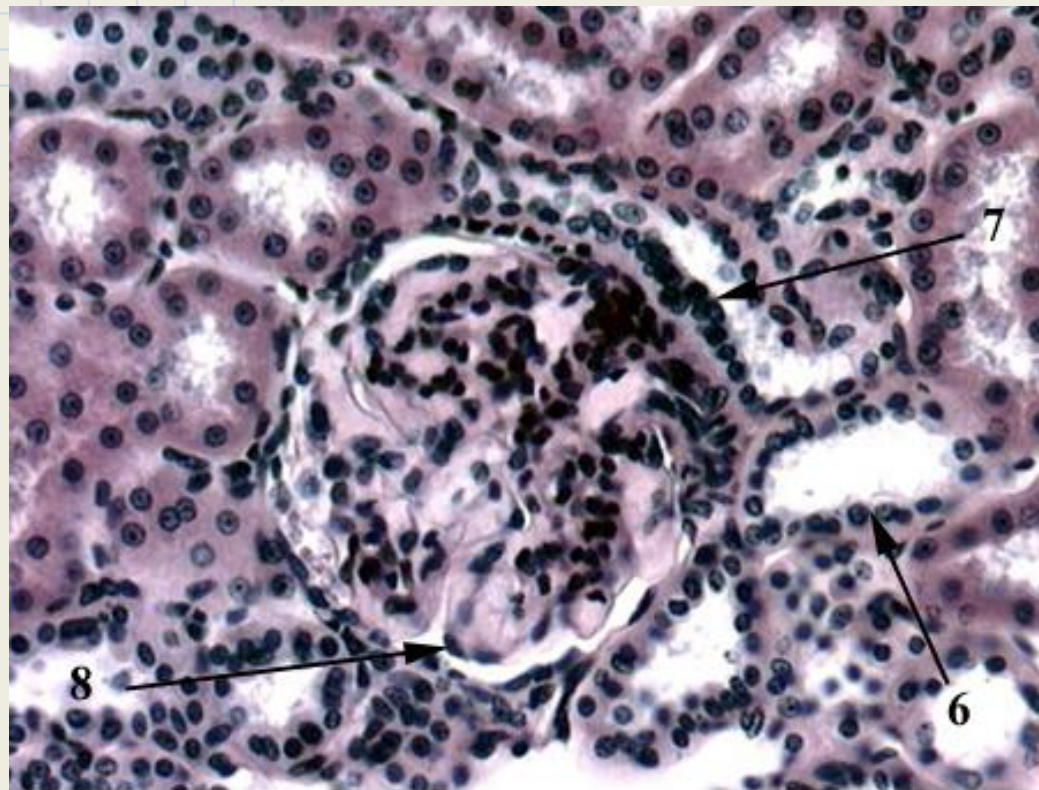
13. Identify the region of the organ.
14. Identify the structure indicated by the arrow.
15. Identify the structure indicated by the arrow.
16. Identify the layer indicated by the arrow.

13. Kidney cortex

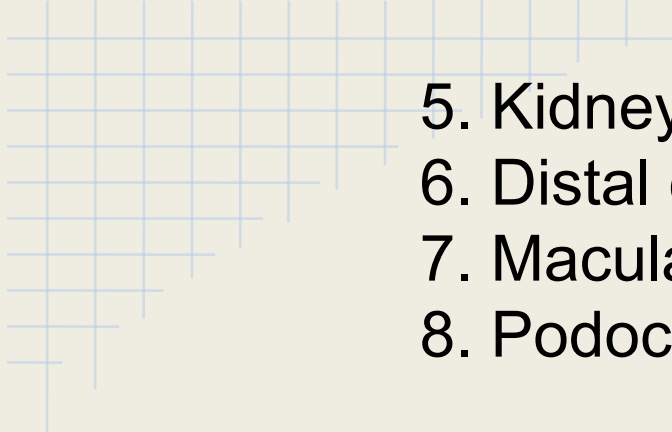
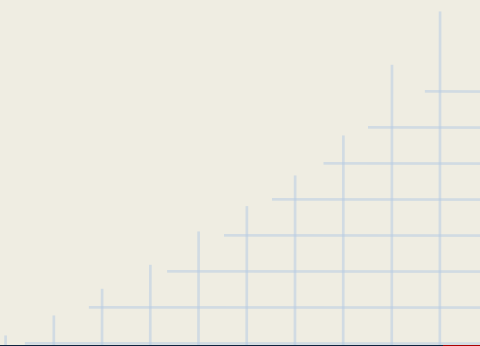
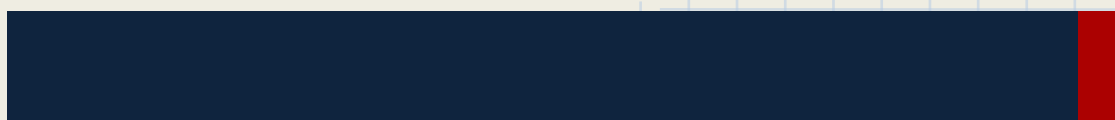
14. Macula densa

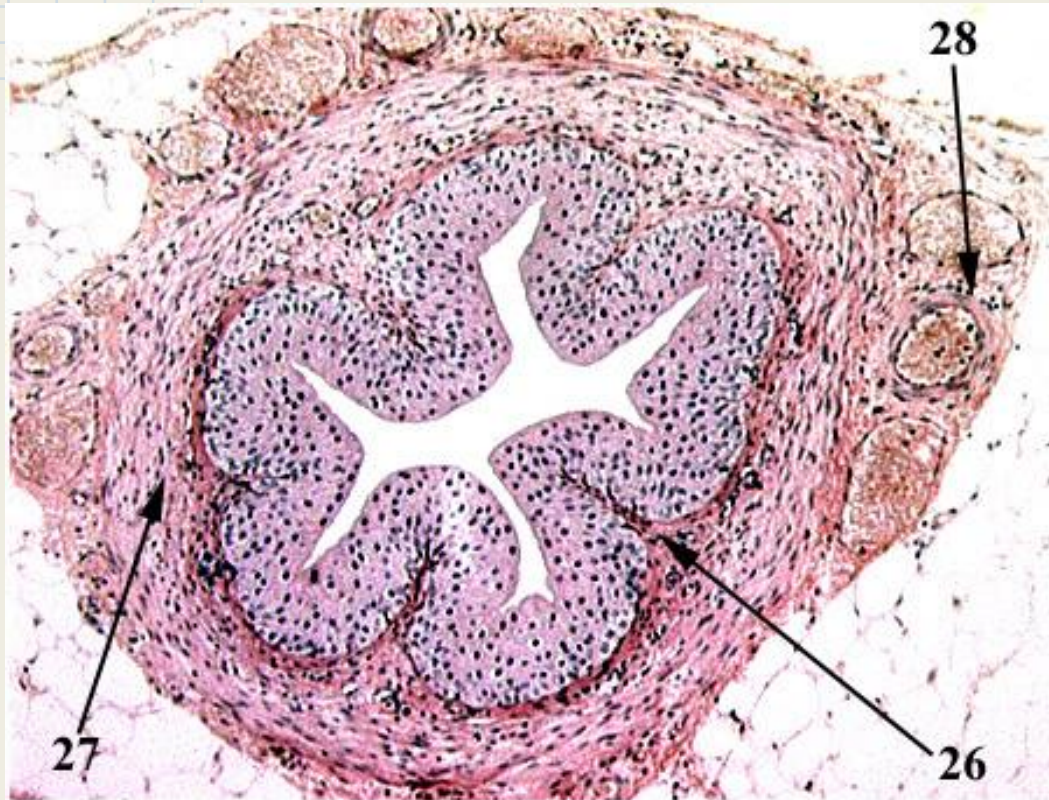
15. Proximal convoluted tubule

16. Parietal layer of Bowman's capsule



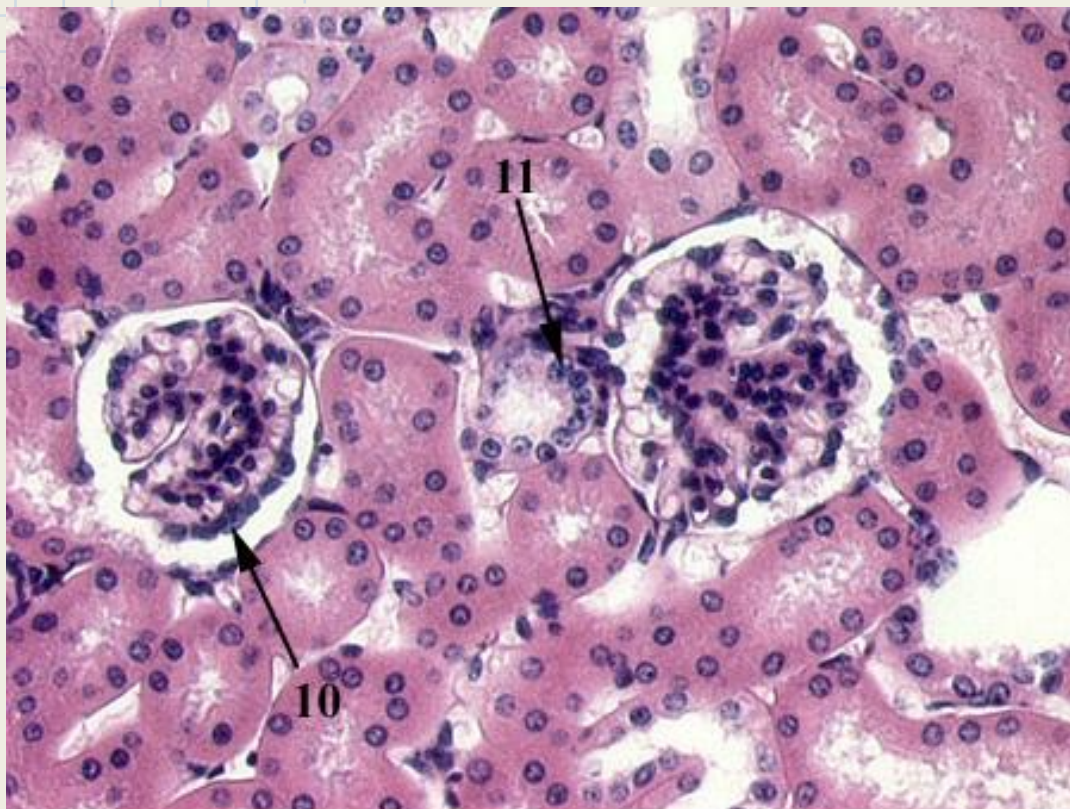
5. Identify the region of the organ.
6. Identify the structure indicated by the arrow.
7. Identify the structure indicated by the arrow.
8. Identify the cell type indicated by the arrow.

- 
5. Kidney cortex
 6. Distal convoluted tubule
 7. Macula densa
 8. Podocyte
- 
- 



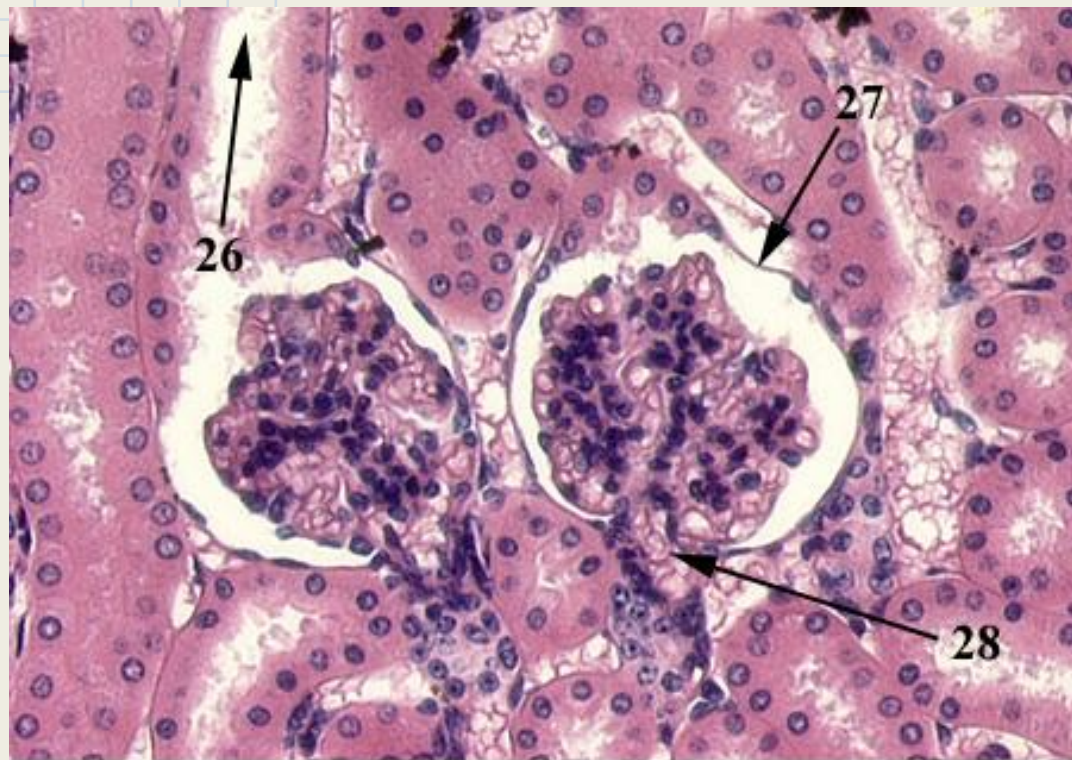
25. Identify the organ.
26. Identify the layer indicated by the arrow.
27. Identify the tissue indicated by the arrow.
28. Identify the layer indicated by the arrow.

- 25. Ureter
- 26. Lamina propria
- 27. Smooth muscle
- 28. Adventitia



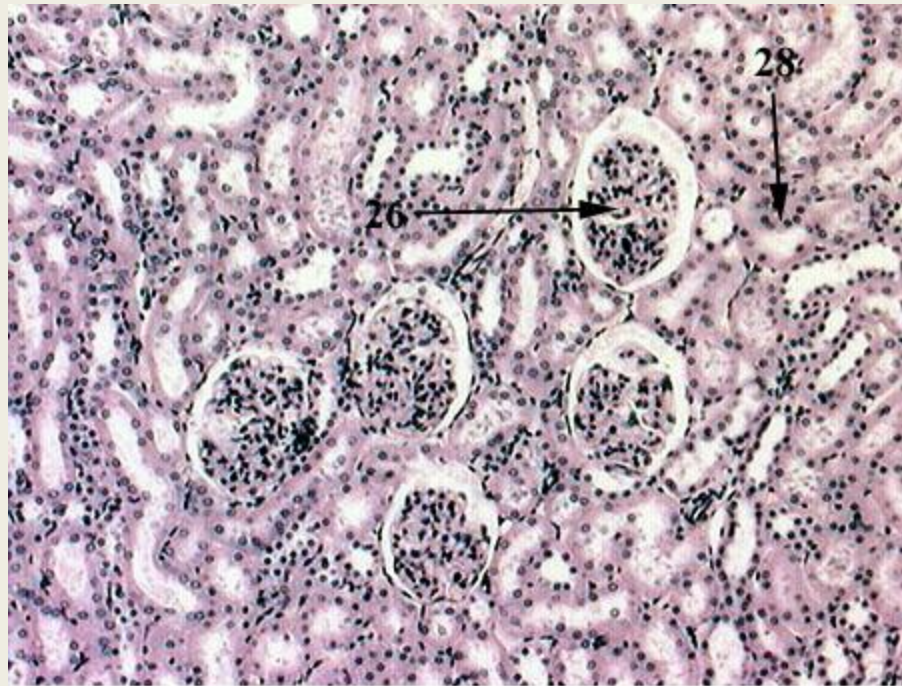
9. Identify the region of the organ.
10. Identify the cell type indicated by the arrow.
11. Identify the structure indicated by the arrow.
12. What is the function of this (# 11) structure ?

- 9. Kidney cortex
- 10. Podocyte
- 11. Macula densa
- 12. Osmoreceptor



25. Identify the region of the organ.
26. Identify the structure indicated by the arrow.
27. Identify the layer indicated by the arrow.
28. Identify the region of the structure indicated by the arrow.

- 25. Kidney cortex
- 26. Proximal convoluted tubule
- 27. Parietal layer of Bowman's Capsule
- 28. Vascular pole



25. Identify the region of the organ in the field of view.
26. Identify the entire structure indicated by the arrow.
27. Identify the structure at the tip of the arrow.
28. Identify the structure indicated by the arrow.



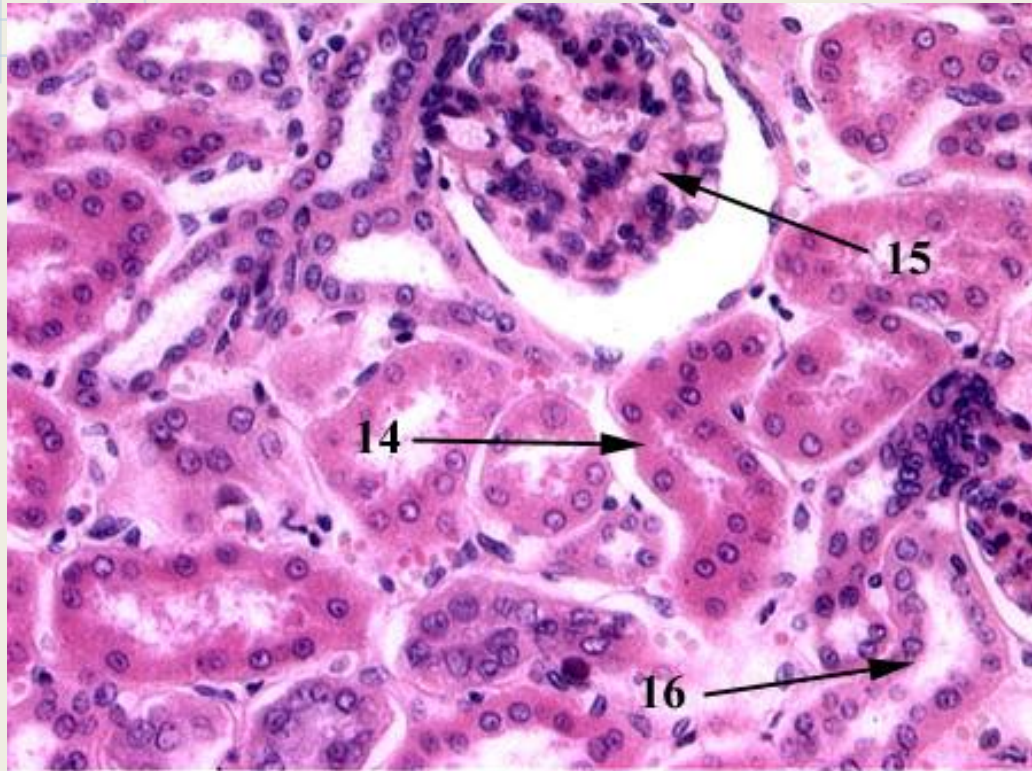
25. Kidnet cortex

26. Renal corpuscle or Bowman's capsule

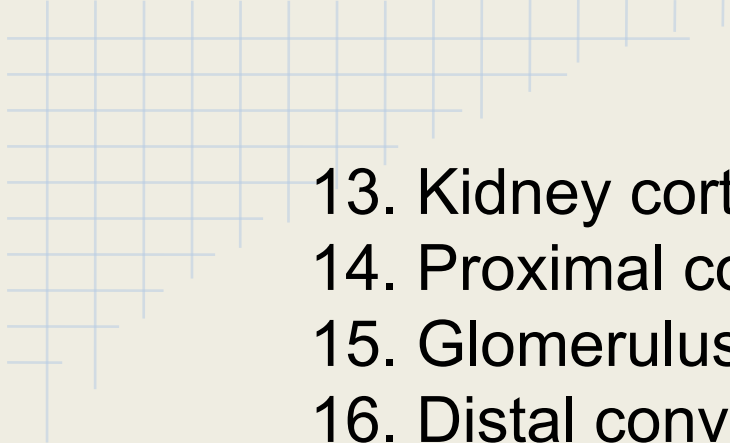
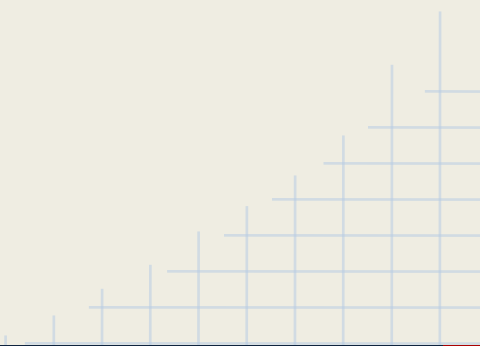
27. Glomerulus

28. Proximal convoluted tubule





13. Identify the region of the organ.
14. Identify the structure indicated by the arrow.
15. Identify the structure indicated by the arrow.
16. Identify the structure indicated by the arrow.

- 
13. Kidney cortex
 14. Proximal convoluted tubule
 15. Glomerulus
 16. Distal convoluted tubule
- 
- 