



قالوا سبحانك
لا علم لنا الا ما علمتنا انك انت العليم الحكيم





Cairo University

Faculty of Urban & regional planning

Land Suitability Assessment (LSA)

Dr Safaa Ghoneim



Land Suitability Assessment

LSA
Aims to:

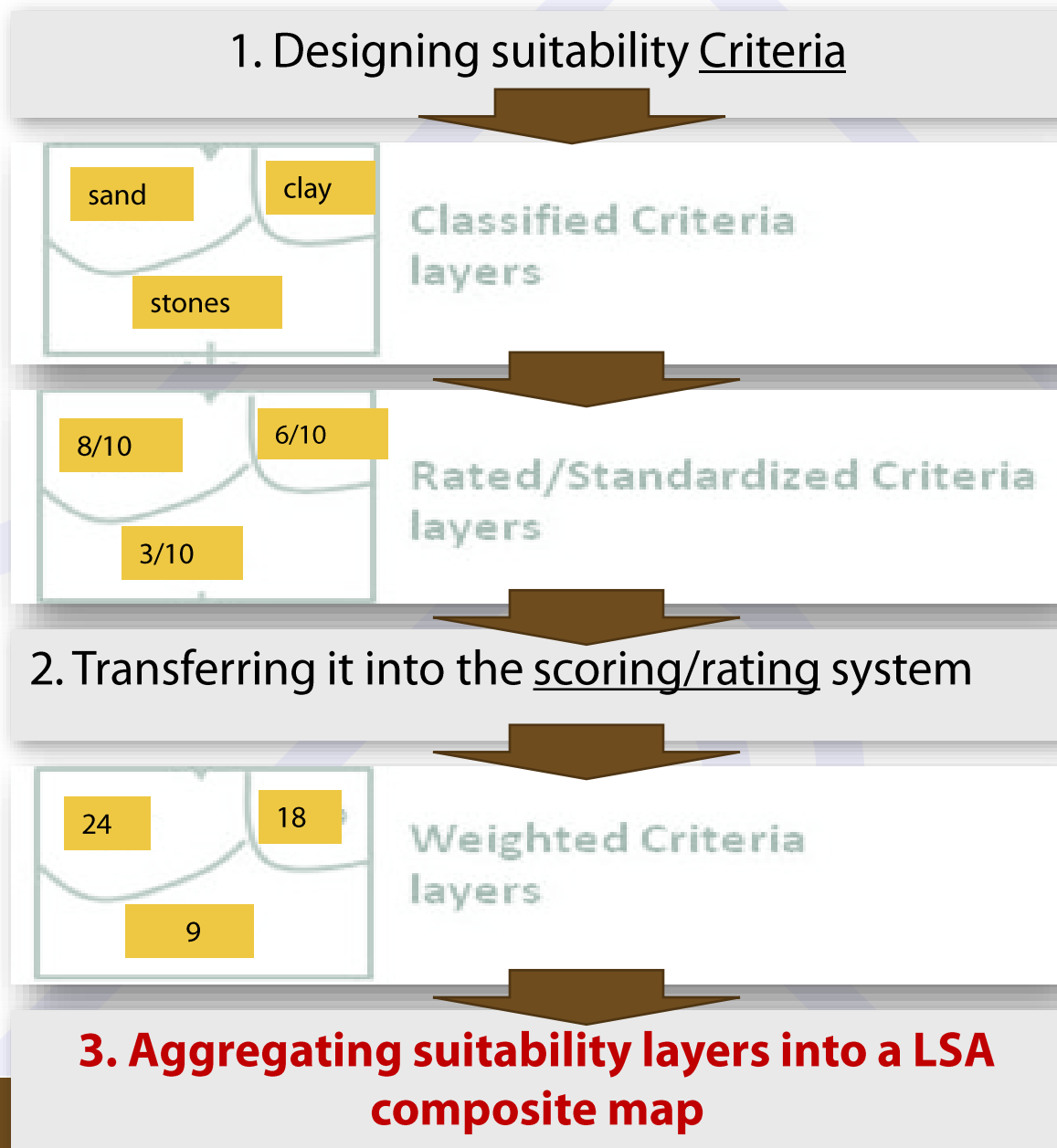
Maximize Benefits

Avoid Hazards

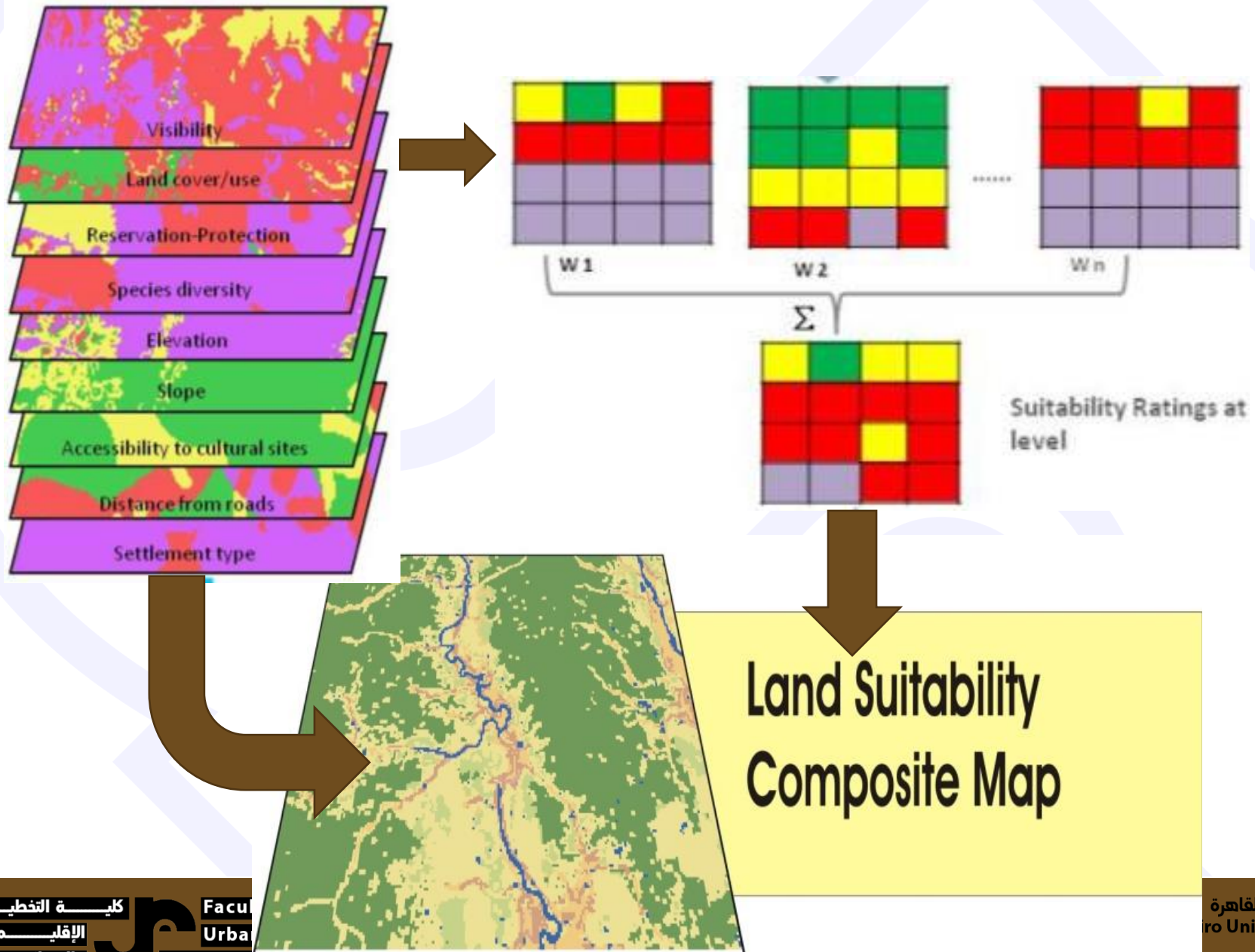
Minimize Impact

Minimize Cost

General Steps of Land Suitability Assessment



Land Suitability Assessment



Examples of LSA

Case 1: LSA for Development

Miami Valley

Criteria of 30
variables

15 related to
Natural Environment

15 related to
Built Environment

Natural Environment

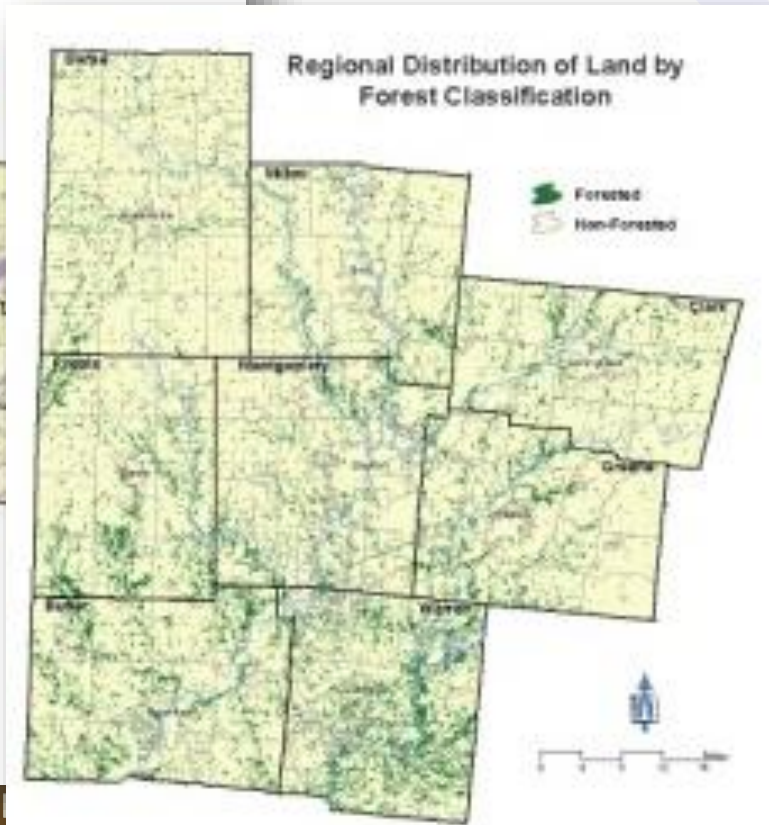
Depth to bedrock



Flood plain



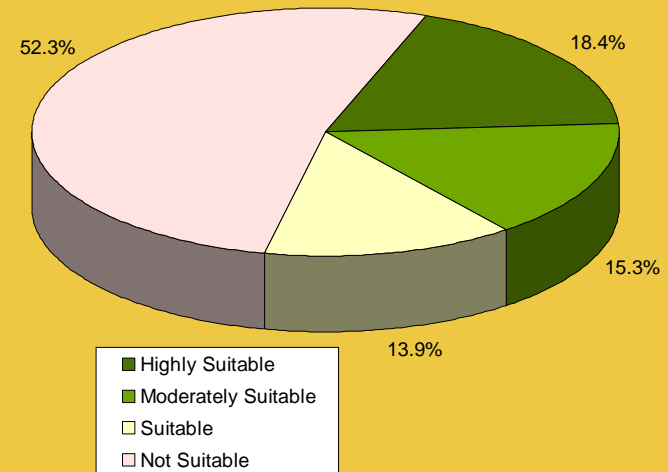
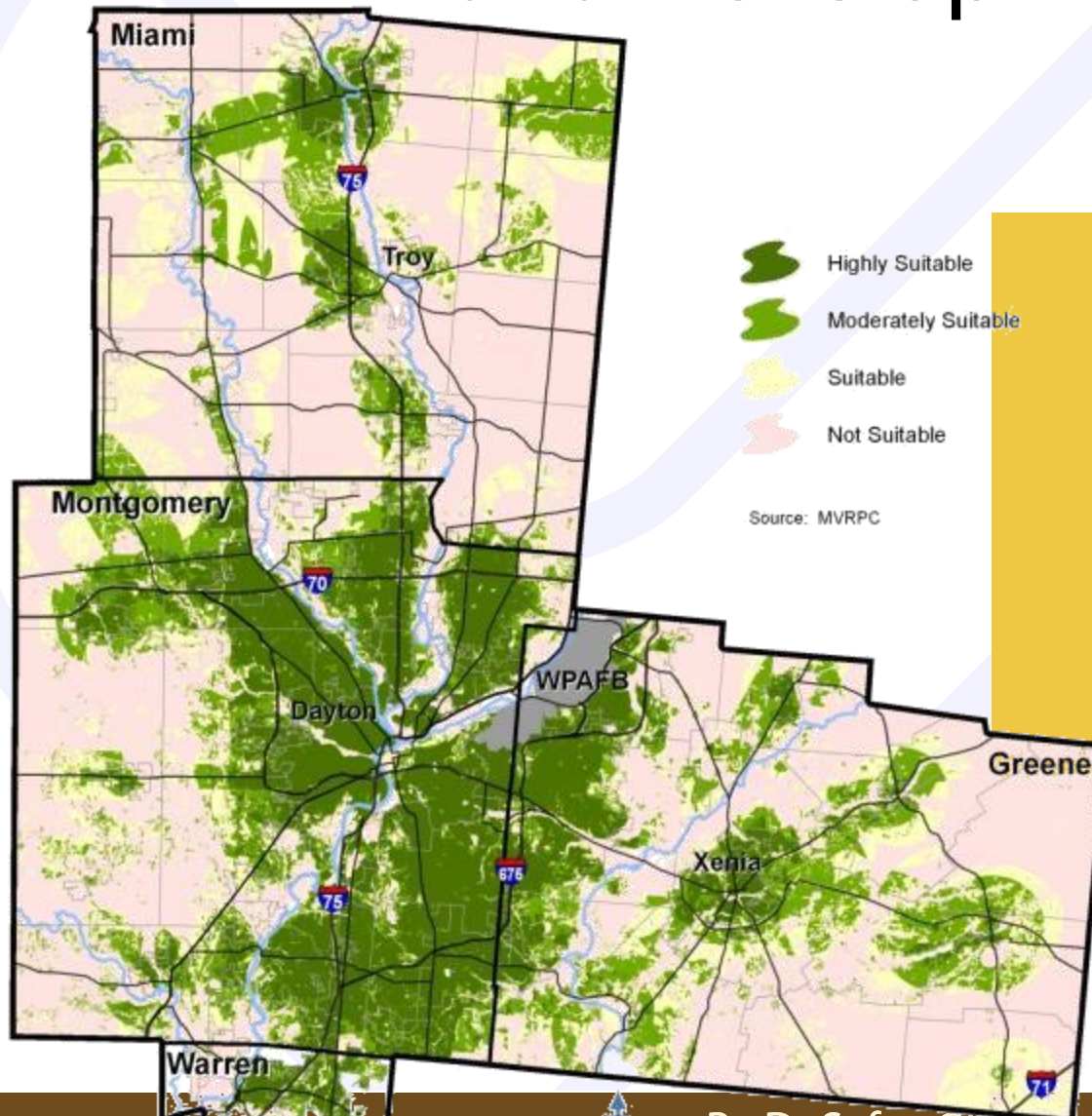
Forest classes



Land Suitability Scoring System

Environment Factors	Data Attributes	Suitability Measures	Attribute Score	Weight Factor	Suitability Score
Depth to Bedrock	Adequate Depth	Suitable	5	2	10
	Shallow Depth	Not Suitable	1		2
	Not Rated	NA	0		0
Floodplain	Outside Floodplain	Suitable	5	4	20
	500 Year	Somewhat Suitable	2		8
	100 Year	Not Suitable	1		4
Forested Areas	Non-Forested	Suitable	5	2	10
	Forested	Not Suitable	1		2
Ground Water Pollution Potential	Low Potential	Suitable	5	2	10
	Medium Potential	Somewhat Suitable	3		6
	High Potential	Not Suitable	1		2

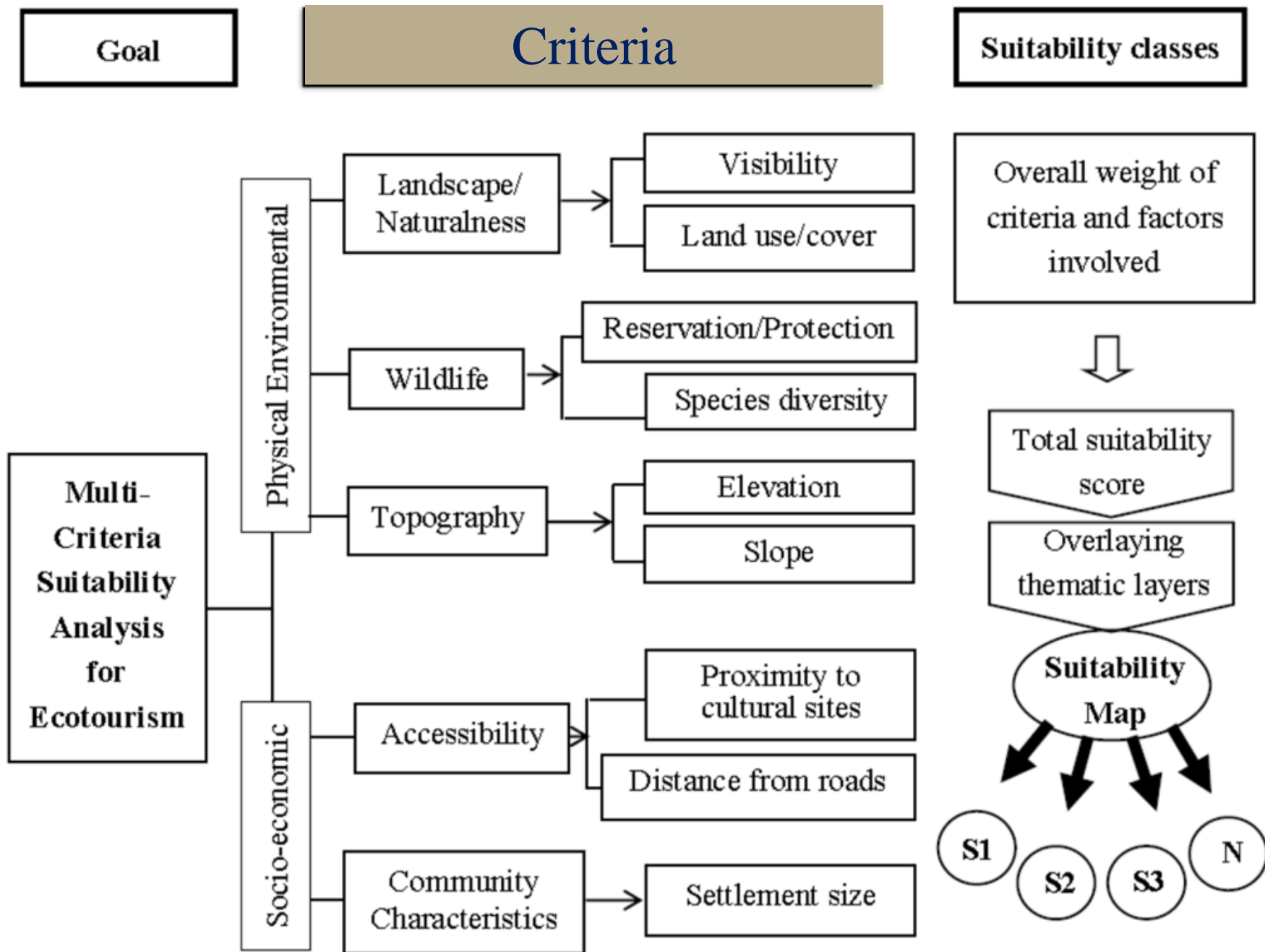
Land Development Suitability



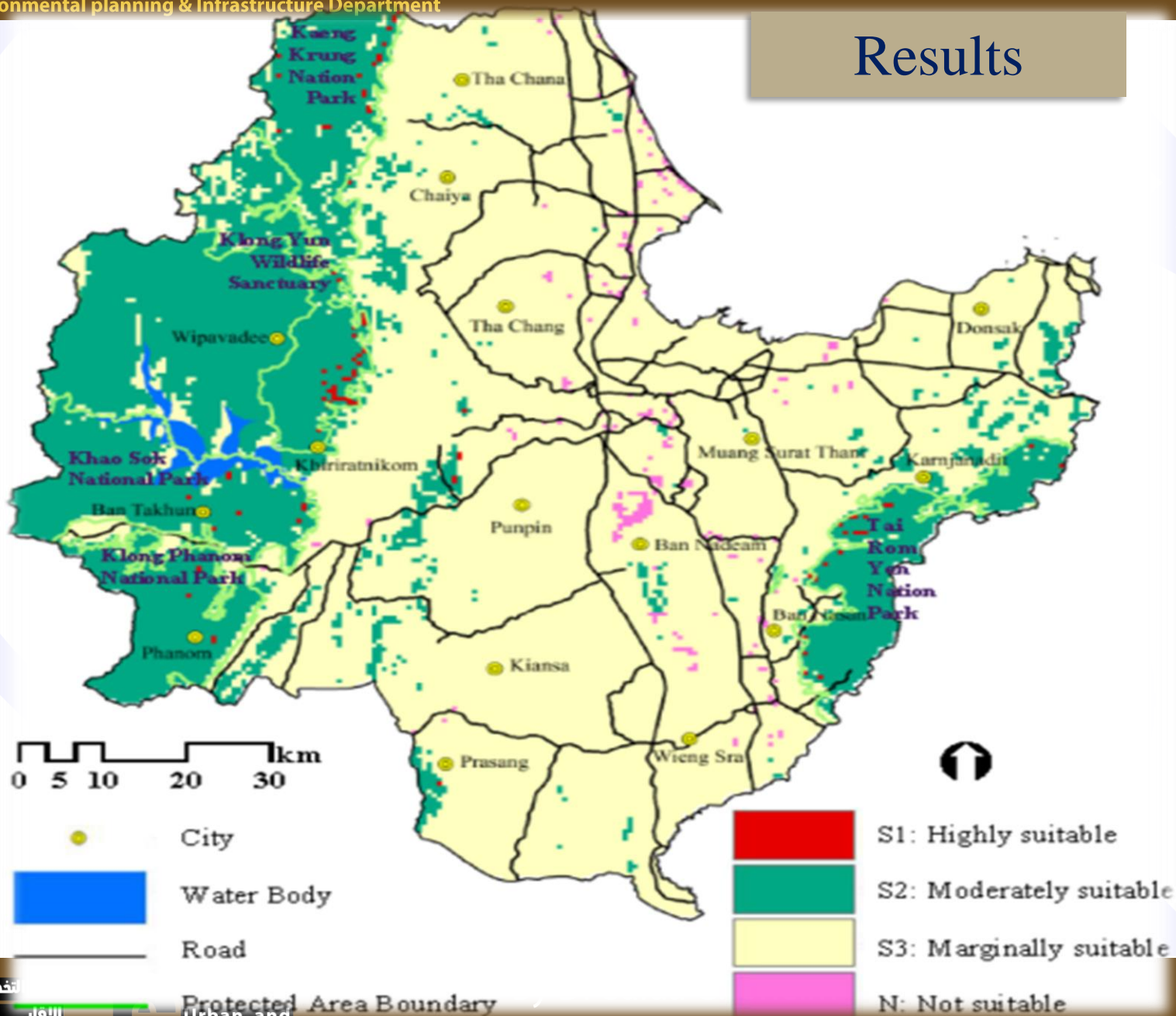
Case 3: LSA for tourism

Thailand

- Rich in nature: coastline of around 156 km & various islands.
- There are ferries providing transportation from main land to the islands.
- The topography is a combination of mountain ranges, valleys and river plains.
- The local climate is influenced by the monsoon from the Indian ocean.
- History , culture, and a number of parks;



Results



Case 5: LSA for **Regional Development** - Ireland

An example of:

- +/- directions of variables
- Based on scenarios

Indicators of suitability

1. Distance to industrial areas → -
2. Proximity to commercial areas → -
3. Proximity to services → -
4. Proximity to main roads → -
5. Proximity to railroad and light rail stations → -
6. Proportion of residential areas → -
7. Proximity to coast → +
8. Quantity of potential jobs → +
9. Quantity of nearby educational institutes → +
10. Quantity of nearby green areas → +
11. Ratio of green areas to built areas → +

11

