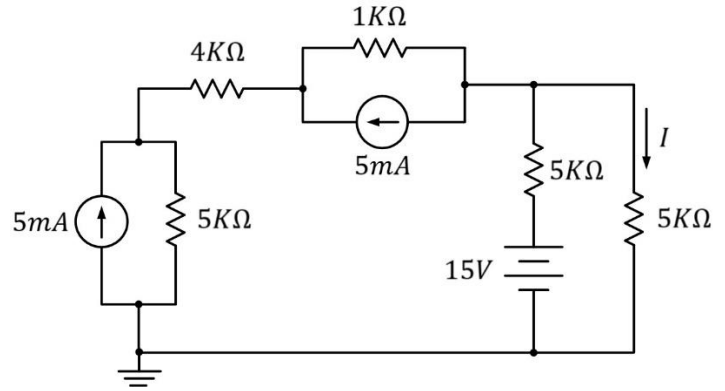


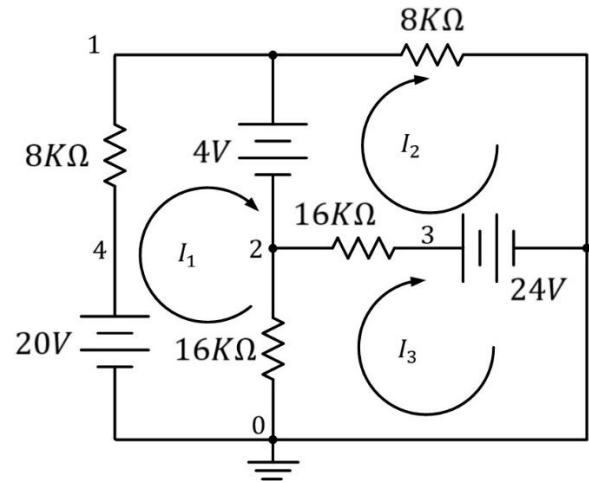


Sheet (1): Circuit revision

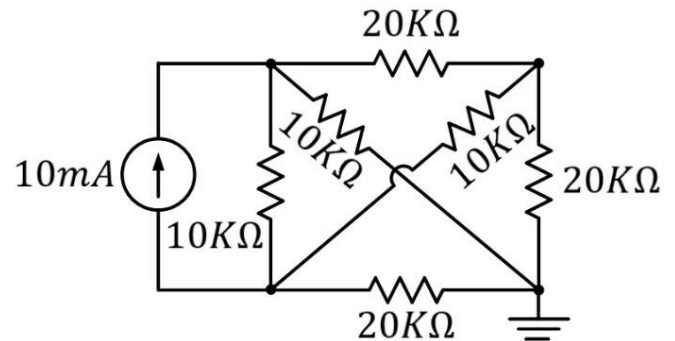
- 1) For the circuit shown, Find the current I using:
- Simplification Method
 - Loop Analysis



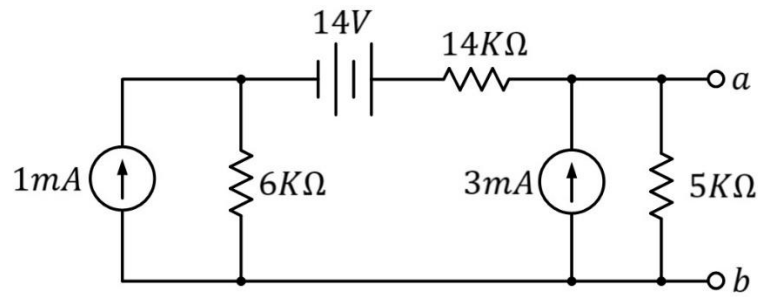
- 2) For the circuit shown, calculate
- The branch currents
 - The power dissipated by each resistor
 - The power supplied by each source
 - The voltage of node 1 through branch 120 and 140



- 3) Calculate the branch currents for the circuit shown using nodal analysis. Check your calculations by calculating the power supplied by the current source and the power dissipated by resistors.



4) Find the Thevenin and Norton equivalents at terminals a-b of the circuit shown in the figure



5) Obtain the Thevenin and Norton equivalent circuits at terminals a-b for the circuit shown.

