

Purification and Biochemical Characterization of Xylanase from *Sclerotium rolfsii*

Tarek A. A. Moussa*, Neveen M. Khalil, Dalia M. I. Ali and Fatma A. Mostafa

Department of Botany and Microbiology, Faculty of Science, Cairo University, Giza 12613, Egypt.

(Received: 23 October 2014; accepted: 28 November 2014)

Xylanases have received great attention in the development of environment-friendly technologies in the paper and pulp industry. Their use could greatly improve the overall lignocellulosic materials for the generation of liquid fuels and chemicals. Fungi are widely used as xylanase producers and are generally considered as more potent producers of xylanases than bacteria and yeasts. After the purification steps, a purified xylanase enzyme was obtained with purification fold 14.3. The SDS-PAGE for enzyme protein gave a single band at about 32 kDa. The zymogram technique was performed to ensure that the purified enzyme was xylanase using 0.1% brichwood xylan. The optimum reaction temperatures of the xylanase enzyme were 50°C and 60°C, while optimum pH values were 5.0 and 6.0. From the above we can conclude that the optimum temperature lies between 50-60°C and optimum pH lies between pH 5.0 and 6.0. The activity of xylanase enzyme was stable at 50°C and 60°C, and pH 4.0 and 5.0 for at least 2 hrs. Mg²⁺ was the only metal, which enhanced the xylanase activity, while Cu²⁺ and Hg²⁺ showed the highest inhibitory effects on the activity of xylanase. The metal chelating agent EDTA had moderately inhibitory effect on enzyme activity.

Key words: Xylanase, SDS-PAGE, zymogram, inhibitors, *Sclerotium rolfsii*.

Cellulose, hemicellulose, and lignin are the major components of plant cell walls, with cellulose being the most abundant component followed by hemicelluloses^{1, 2}. Plant biomass comprises on average 23% lignin, 40% cellulose, and 33% hemicellulose by dry weight³. Hemicellulose is composed of xylan as a major component⁴ that constitutes about 20-40% of total plant biomass⁵ and accounts for approximately one third of all renewable organic carbon on earth⁶.

Xylan has a high potential for conversion to useful end products. Complete conversion of the hemicellulose requires the action of several main-chain- and side-chain-cleaving enzymes⁷

including: endoxylanase (endo-1,4-β-xylanase, E.C.3.2.1.8), β-xylosidase (xylan 1,4-β-xylosidase, E.C.3.2.1.37), α-glucuronidase (α-glucosiduronase, E.C.3.2.1.139), α-arabinofuranosidase (β-L-arabinofuranosidase, E.C.3.2.1.55), and acetylxylan esterase (E.C. 3.1.1.72) (7, 8). Endo-²-1,4-xylanases catalyze the hydrolysis of the backbone of xylan to produce xylooligosaccharides, which in turn can be converted to xylose by β-xylosidase⁹.

Based on amino acid sequence homologies and hydrophobic cluster analysis, xylanases have been grouped mainly into two families of glycosyl hydrolases: family F or GH10 and family G or GH11¹⁰⁻¹². However, other glycoside hydrolase families, 5, 7, 8, and 43, have also been found to contain distinct catalytic domains with a demonstrated endo-1,4-β-xylanase activity¹³. Xylanases of family G are of low molecular mass with pI 8–9.5 compared to the family F xylanases

* To whom all correspondence should be addressed.
E-mail: tarekmoussa@yahoo.com

that are of high molecular mass with lower pI values¹⁴. The optimum pH for xylan hydrolysis is around 5 for most fungal xylanases, whereas pH optima of bacterial xylanases are generally slightly higher¹⁵. The xylanases and cellulases together with pectinases account for about 20% of the world enzyme market¹⁶.

In a number of fungi, these various endoglycanases can be quite specifically induced. During the growth of *T. reesei* and *T. harzianum* on xylan-based media, mainly xylanase activities with low levels of endoglucanase are formed. Growth on cellulose or on heterogeneous native substrates containing both xylan and cellulose results in the concomitant production of both endoglucanase and xylanase activities. This unspecific effect of cellulose could be explained by xylan impurities found in commercially available cellulose preparations¹⁷.

The ability to produce xylanase by *Sclerotium rolf sii* isolated from diseased sugarbeet roots was studied¹⁸ as well as the influence of different cultural conditions on enzyme production by this species in the laboratory¹⁹. This organism is known as an excellent producer of cellulolytic enzymes as well as of hemicellulolytic enzymes²⁰⁻²². In this investigation, we will purify and study the biochemical characterizations of xylanase enzyme from *S. rolf sii*.

MATERIALS AND METHODS

Microorganism and culture conditions

S. rolf sii Sacc. was isolated from diseased sugarbeet roots¹⁸ and maintained on a medium described by Johnson and Curl²³ and composed of (g/l): dextrose, 30; KH₂PO₄, 1; MgSO₄·7H₂O, 0.5; KCl, 0.5; KNO₃, 2; and 1 ml of each of stock solutions (1 g/l) of FeSO₄·7H₂O, MnSO₄·7H₂O, ZnSO₄·7H₂O, and thiamine; agar, 20 g.

Production of enzymes at optimized conditions

From the previous experiments, *S. rolf sii* was cultivated on the optimized medium according to Moussa¹⁹ containing (g/l): peptone, 8.0; asparagines, 3.0; MgSO₄·7H₂O, 1.5; KH₂PO₄, 1.2; KCl, 0.6; xylan, 0.2; and trace element solution at 0.3 ml/l. The flasks were inoculated with 5-mm plug cut out from the margin of a 5-day-old culture. Incubation was carried out at 25 ± 2 °C under shaking at 100 rpm for 11 days. The culture filtrate

was desalted and concentrated by ultrafiltration and used in purification.

Purification of xylanase enzyme

Filtrate proteins were fractionated by ammonium sulfate precipitation (0-80%). The precipitate was recovered by centrifugation at 10000 rpm for 30 min at 4°C, then dissolved in 10 ml 50 mM acetate buffer (pH 6.8) and dialyzed overnight using 500 ml of the same buffer. This sample was chromatographed onto DEAE-Sephadex A-50 column, which has been equilibrated with 50 mM acetate buffer (pH 6.8). The protein was eluted with gradient NaCl from 0-1 mol/l. Elution was done at a flow rate of 18 ml h⁻¹; 3.0-ml fractions were collected. Protein concentration and xylanase activity were determined. The fractions exhibiting significant activity were pooled. After desalting, the enzyme was loaded onto a Sephadex G-75 gel filtration column (18x600 mm column) equilibrated with the same buffer. Elution was done at a flow rate of 18 ml h⁻¹; 3.0-ml fractions were collected. All the steps were carried out at 4°C.

Enzymes assays

Xylanase activity was determined at 40°C by using xylan from birchwood (Sigma) as substrate, in 50 mM acetate buffer, pH 4.5. Reducing sugars released were assayed by Somogyi method²⁴ modified from Nelson procedure²⁵ with xylose as standards. One unit of enzyme activity was defined as the amount of enzyme required to liberate 1 μmol/min of xylose equivalents.

SDS-PAGE electrophoresis

SDS-PAGE was performed according to the method of Laemmli²⁶ using 12.5% gel. Sample was dissolved in a solution containing 2% (w/v) SDS, 5% (v/v) 2-mercaptoethanol, 10% (v/v) glycerol, and 15mM Tris-HCl (pH 6.8) and heated in a boiling water bath for 3 min. after electrophoresis; the gel was stained with Coomassie brilliant blue R-250 according to Merril²⁷.

Zymogram technique

Zymogram analysis was performed by the method of Morag *et al.*²⁸. Sample was electrophoresed on SDS-12.5% polyacrylamide gel containing 0.1% birchwood xylan as described above. Then, the gel was washed four times for 30 min at 4°C in a 100 mM Na₂CO₃-NaHCO₄ buffer (pH 9.0) (the first two washes contained 25% [v/v]

isopropyl alcohol) to remove SDS and re-nature proteins in the gel and further incubated in the buffer for 10 min at 37°C. The gel was soaked in 0.1% Congo red solution for 15 min at room temperature and washed with 1M NaCl until excess dye was removed from the active bands. A zymogram was prepared after an introduction of the gel into 0.5% acetic acid. The background turned dark blue, and clear zones in areas exposed to enzymes activity were observed.

Optimum temperature, pH and thermal stability

Optimum assay temperature was determined by conducting a standard assay at 20-65°C. To determine optimum pH, the assay was carried out in acetate buffer (pH 3.0, 4.0, 5.0); phosphate buffer (pH 6.0, 7.0, 8.0), respectively. Thermal stability was estimated after incubation of the enzyme (10-120 min) in absence of the substrate determining the residual activity against time. For pH stability, the enzyme was incubated in the aforementioned buffer systems for 10-120 min in absence of substrate determining the residual activity against time. The enzyme assay was carried as mentioned above.

RESULTS

From the data presented in Table 1, we can conclude that the total activity and protein concentration decreased with progress of purification steps, which led to increase in specific activity of xylanase, this means that the purification steps used were highly efficient for xylanase enzyme. On the other hand, the purification fold increased by about 14 times in the final step of purification (sephadex G-75) than the crude enzyme (culture filtrate). The recovery percentage of protein was decreased dramatically with the purification processes were progressed.

After gel filtration step (sephadex G-75), The enzyme aliquote was freeze dried and kept at -20°C and used in the further experiments. The protein was applied to SDS-PAGE and stained with Coomassie brilliant blue R-250, which gave a single band at about 32 kDa (Fig. 1). The zymogram technique was performed to ensure that the purified enzyme was xylanase using 0.1% birchwood xylan. The zymogram test showed a colourless band corresponding to the protein band on gel (Fig. 1).

Table 1. Purification data obtained from different purification steps of xylanase from *S. rofsii*

Purification step	Total activity(U)	Total protein(mg)	Specific activity(U/mg)	Recovery (%)	Purification fold
Culture filtrate	25389.3	2613.1	9.7	100	1.0
Amm. Sulfate ppt.	17413.1	564.5	30.9	68.6	3.2
DEAE-Sephadex A-50	8792.7	87.3	100.7	34.3	10.4
Sephadex G-75	5939.4	42.9	138.5	23.4	14.3

Table 2. Effects of some metals and EDTA on xylanase activity from *S. rofsii*

Compound	Concentration (mM)	Relative activity (%)
MgSO ₄	2.0	110
ZnCl ₂	2.0	99
FeSO ₄	2.0	95
AgNO ₃	2.0	85
CoCl ₂	2.0	87
MnSO ₄	2.0	75
HgCl ₂	2.0	15
CuSO ₄	2.0	35
EDTA	3.0	87

The reaction temperature of the xylanase enzyme was greatly affect the activity, where no activity at 10°C and gradually increased starting from 20°C to 50°C and no significant difference between the activity at 50°C and 60°C, then dramtically the enzyme activity was completely inhibited at 70°C (Fig. 2). The effect of pH values on enzyme activity was shown in Fig. 3., where the xylanase activity was increased sharply from pH 3.0-5.0, and no significant diferece between the activity at pH 5.0 and 6.0 and then also decreased sharply decreased till pH 8.0. From Fig. 4, the activity of xylanase enzyme was stable at 50°C and 60°C for at least 2 hrs. Also, the xylanase activity

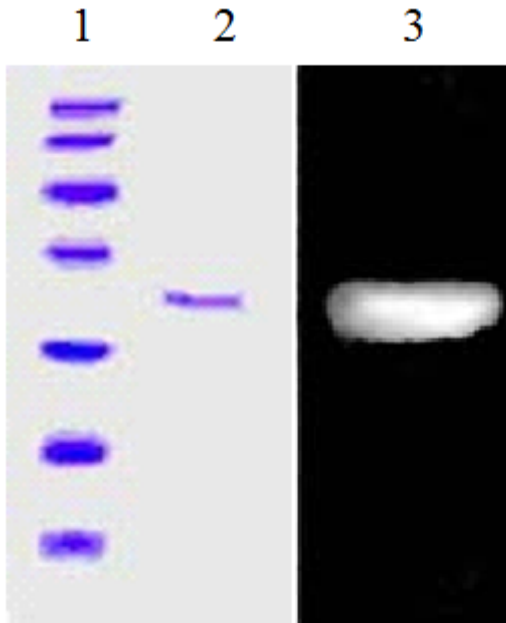


Fig. 1. SDS-PAGE and zymogram analysis of *S. rolf sii* xylanase. Lane 1: Molecular marker, Lane 2: Purified xylanase. The clear band in Lane 2 showed xylanase activity

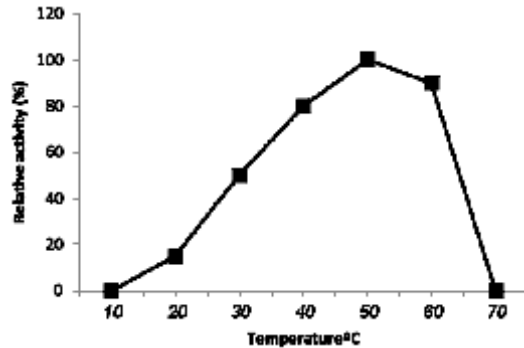


Fig. 2. Effect of different reaction temperatures on the activity of xylanase enzyme from *S. rolf sii*

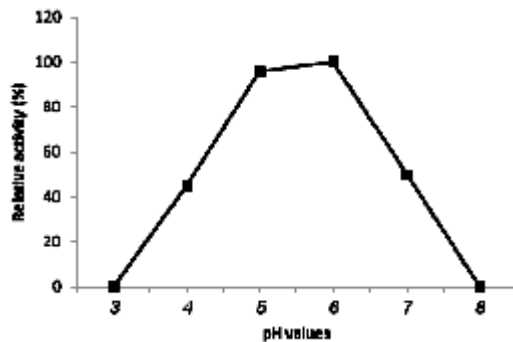


Fig. 3. Effect of different reaction pH values on the activity of xylanase enzyme from *S. rolf sii*

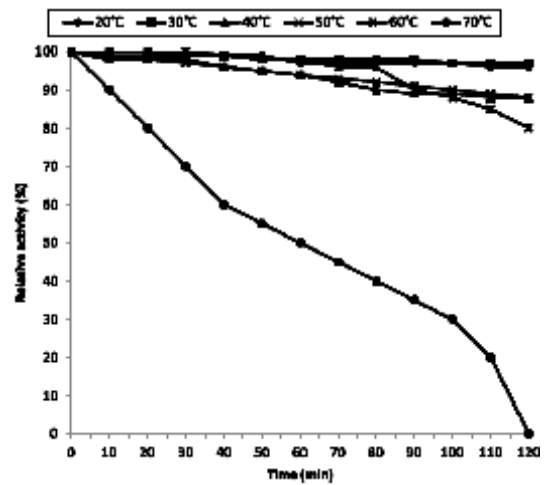


Fig. 4. Thermal stability of xylanase enzyme from *S. rolf sii* incubated at different temperatures for 2 hrs.

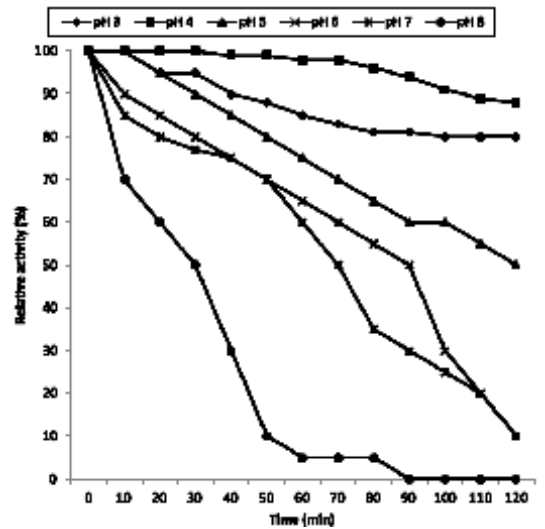


Fig. 5. pH stability of xylanase enzyme from *S. rolf sii* incubated at different temperatures for 2 hrs

was stable when incubated at pH 4.0 and 5.0 for at least 2 hrs (Fig. 5).

From the results in Table 2, Mg²⁺ was the only metal, which enhanced the xylanase activity, while Cu²⁺ and Hg²⁺ showed the highest inhibitory effects on the activity of xylanase (35 and 15%, respectively). Zn²⁺ and Fe²⁺ had neglecting inhibitory effects on the xylanase (99 and 95%, respectively), while Ag²⁺, Co²⁺ and Mn²⁺ had moderate inhibitory effects on xylanase activity (85, 87 and 75%, respectively). The metal chelating

agent EDTA had moderately inhibitory effect on enzyme activity (87%).

DISCUSSION

Most of the microorganisms isolated from soil/waste/composting waste material are capable of producing a spectrum of cell wall-degrading enzymes^{20,21,29}. Filamentous fungi have been used for more than 50 years in the production of industrial enzymes³⁰. They are widely used as xylanase producers and are generally considered as more potent xylanase producers than bacteria and yeasts^{16, 19, 31-33}. Species of fungal genera that are known to produce xylanases include *Aspergillus*, *Disporotrichum*, *Penicillium*, *Neurospora*, *Fusarium*, *Chaetomium*, *Trichoderma*, *Scelortium* etc.^{20, 21, 34, 35}.

The total activity and protein concentration decreased with progress of purification steps, which led to increase in specific activity of xylanase, this means that the purification steps used were highly efficient for xylanase enzyme. On the other hand, the purification fold increased by about 14 times in the final step of purification (sephadex G-75) than the crude enzyme (culture filtrate). The recovery percentage of protein was decreased dramatically with the purification processes were progressed.

The production of both xylanases and cellulases in media with xylan or cellulose as sole carbon source may be due to substrates contamination or substrate cross-specificity that can range from absolute for one polymer to about the same affinity for both of them^{17, 36, 37}. Nevertheless, concurrent formation of cellulase and xylanase has been observed in several fungi using natural and synthetic substrates³⁸⁻⁴⁰. There are suggestions of an interaction between xylanase and cellulase induction³⁹ although the xylanolytic and cellulolytic systems in some filamentous fungi are likely to be under separate regulatory control^{33, 38, 41}. In *S. rolfssii* there was a poor cross induction of cellulolytic and xylanolytic enzymes, as in *Aspergillus terreus* mainly induced by the respective synthetic dimmers³⁸.

The low molecular weight (32 kDa) of this enzyme was similar to that of xylanases from *Aspergillus* (25 kDa)⁴², from *Streptomyces lividans* 66 (31 kDa)⁴³. Xylanases of family G are of low

molecular mass with pI 8–9.5 compared to the family F xylanases that are of high molecular mass with lower pI values¹⁴.

The optimum reaction temperatures of the xylanase enzyme were 50°C and 60°C, also it was stable at that temperatures. These properties should make it a good candidate in various industrial applications. With its pH stability and moderate thermal stability properties, it was most suitable for use in the animal feed industry⁴⁴. The optimum pH for xylan hydrolysis is around 5 for most fungal xylanases, whereas pH optima of bacterial xylanases are generally slightly higher¹⁵. The xylanases and cellulases together with pectinases account for about 20% of the world enzyme market¹⁶. Many xylanases are active at acidic pH⁴⁵, the xylanase under study also had an acidic pH optimum (5.0-6.0) and was stable under that conditions.

The xylanase was optimally active at 50-60°C compared to 50°C from *P. varioti* and 65°C from *P. varioti*^{46, 47}. The optimal temperature of xylanase in this study was similar to the xylanases from *T. emersonii*⁴⁸, *Gloeophyllum trabeum*⁴⁹ and *T. lanuginosus* strains ATCC 46882⁵⁰.

Xylanases produced by thermophilic fungi are usually more thermostable than those of mesophilic fungi. This xylanase in present investigation, like xylanases isolated from some thermophilic fungi, such as *T. lanuginosus* strains, the xylanase was also stable over a wide pH range^{51, 52}. Thus, its thermal stability is an attractive feature for industrial applications.

Mg²⁺ was the only metal, which activated the xylanase activity, this was with the findings obtained by Yang et al.⁴². The Cu²⁺ and Hg²⁺ showed the highest inhibitory effects on the activity of xylanase, while the metal chelating agent EDTA had moderately inhibitory effect on enzyme activity, which was similar to those concerning the xylanase reported by others^{53, 54}.

REFERENCES

1. Han, S.O., Yukawa, H., Inui, M., Doi, R.H. Regulation of expression of cellulosomal cellulase and hemicellulase genes in Clostridium cellulovorans. *J. Bacteriol.*, 2003; **185**: 6067-75.
2. Khandeparker, R., Numan, M.T. Bifunctional xylanases and their potential use in biotechnology. *J. Ind. Microbiol. Biotech.*, 2008;

- 35: 635-44.
3. Sa-Pereira, P., Paveia, H., Costa-Ferreira, M., Aires-Barros, M.R. A new look at xylanases: an overview of purification strategies. *Mol. Biotechnol.*, 2003; **24**: 257-81.
 4. Nair, S.G., Sindhu, R., Shashidhar, S. Purification and biochemical characterization of two xylanases from *Aspergillus sydowii* SBS 45. *Appl. Biochem. Biotechnol.*, 2008; **149**: 229-43.
 5. Ninawe, S., Kapoor, M., Kuhad, R.C. Purification and characterization of extracellular xylanase from *Streptomyces cyaneus* SN32. *Bioresour. Technol.*, 2008; **99**: 1252-8.
 6. Ning, L., Yang, P., Wang, Y., Luo, H., Meng, K., Wu, N., Fan, Y., Yao, B. Cloning, expression, and characterization of protease-resistant xylanase from *Streptomyces fradiae* var. k11. *J. Microbiol. Biotechnol.*, 2008; **18**: 410-6.
 7. Juturu, V. and Wu, J.C. Insight into microbial hemicellulases other than xylanases: a review. *J. Chem. Technol. Biotechnol.*, 2013; **88**: 353-63.
 8. Choi, I.D., Kim, H.Y., Choi, Y.J. Gene cloning and characterization of α -glucuronidase of *Bacillus stearothermophilus* no. 263. *Biosci. Biotechnol. Biochem.*, 2000; **64**: 2530-7.
 9. Zhang, G.M., Huang, J., Huang, G.R., Ma, L.X., Zhang, X.E. Molecular cloning and expression of a new xylanase gene from *Plectosphaerella cucumerina*. *Appl. Microbiol. Biotechnol.*, 2007; **74**: 339-46.
 10. Henrissat, B. A classification of glycosyl hydrolases based on amino acid sequence similarities. *Biochem. J.*, 1991; **280**: 309-16.
 11. Jeffries, T.W. Biochemistry and genetics of microbial xylanases. *Curr. Opin Biotechnol.*, 1996; **7**: 337-42.
 12. Zhou, C., Bai, J., Deng, S., Wang, J., Zhu, J., Wu, M., Wang, W. Cloning of a xylanase gene from *Aspergillus usamii* and its expression in *Escherichia coli*. *Bioresour. Technol.*, 2008; **99**: 831-8.
 13. Collins, T., Gerday, C., Feller, G. Xylanases, xylanase families and extremophilic xylanases. *FEMS Microbiol. Rev.*, 2005; **29**: 3-23.
 14. Buchert, J., Tenkanen, M., Kantelinen, A., Viikari, L. Application of xylanases in the pulp and paper industry. *Bioresour. Technol.*, 1994; **50**: 65-72.
 15. Yu, E.K.C., Tan, L.U.L., Chan, Deschatelets, L., Saddler, J.N. Production of thermostable xylanase by a thermophilic fungus, *Thermoascus aurantiacus*. *Enz. Microbial Technol.*, 1987; **9**: 16-24.
 16. Polizeli, M.L.T.M., Rizzatti, A.C.S., Monti, R., Terenzi, H.F., Jorge, J.A., Amorim, D.S. Xylanases from fungi: properties and industrial applications. *Appl Microbiol Biotechnol.*, 2005; **67**: 577-91.
 17. Senior, D.J., Mayers, P.R., Saddler, J.N. Xylanase production by *Trichoderma harzianum* E58. *Appl. Microbiol. Biotechnol.*, 1989; **32**: 137-42.
 18. El-Abyad, M.S., Hindorf, H., Rizk, M.A. Impact of salinity stress on soil-borne fungi of sugarbeet. I. Pathogenicity implications. *Plant and Soil*, 1988; **110**: 27-32.
 19. Moussa, T.A.A. Optimization of the induction factors of xylanase and β -xylosidase from sugarbeet pathogen *Sclerotium rolfssii*. *J. King Saud Univ. (Science)*, 2009; **21**: 33-40.
 20. El-Abyad, M.S., Abu-Taleb, A.M. and Abdel-Mawgoud, T. Effect of the herbicide pyradur on host cell wall degradation by the sugarbeet pathogens *Rhizoctonia solani* and *Sclerotium rolfssii*. *Can. J. Bot.*, 1996; **74**: 1407-15.
 21. El-Abyad, M.S., Abu-Taleb, A.M. and Abdel-Mawgoud, T. Response of host cultivar to cell wall-degrading enzymes of the sugarbeet pathogens *Rhizoctonia solani* Kühn and *Sclerotium rolfssii* Sacc. under salinity stress. *Microbiol. Res.*, 1997; **152**: 9-17.
 22. Haltrich, D., Laussamayer, B. and Steiner, W. Xylanase formation by *Sclerotium rolfssii*: effect of growth substrates and development of a culture medium using statistically designed experiments. *Appl. Microbiol. Biotechnol.*, 1994; **42**: 522-30.
 23. Johnson, L.F., Curl, E.A. Methods for research on the ecology of soil-borne plant pathogens, p. 112. Burgess Publ. Co., USA. 1972.
 24. Somogyi, M. Notes on sugar determination. *J. Biol. Chem.*, 1952; **195**: 19-23.
 25. Nelson, N. A photometric adaptation of the Somogyi method for the determination of glucose. *J. Biochem.*, 1944; **153**: 375-80.
 26. Laemmli, U.K. Cleavage of structural proteins during the assembly of the head of bacteriophage T4. *Nature (London)*, 1970; **227**: 680-5.
 27. Merrill, C.R. Gel-staining techniques. In: Deutscher MP (ed.). *Methods in Enzymology*, vol. 182. Guide to Protein Purification. Academic Press, San Diego, 1990; 477-488.
 28. Morag, E., Bayer, E.A., Lamed, R. Relationship of cellulosomal and non cellulosomal xylanases of *Clostridium thermocellum* to cellulose degrading enzymes. *J. Bacteriol.*, 1990; **172**: 6098-105.
 29. Badhan, A.K., Chadha, B.S., Kaur, J., Saini, H.S., Bhat, M.K. Production of multiple xylanolytic and cellulolytic enzymes by thermophilic fungus *Myceliophthora* sp. IMI37099. *Bioresour. Technol.*, 2007; **98**: 504-10.

30. Dalboge, H. Expression cloning of fungal enzyme genes; a novel approach for efficient isolation of enzyme genes of industrial relevance. *FEMS Microbiol. Rev.*, 1997; **21**: 29-42.
31. Pedersen, M., Lauritzen, H.K., Frisvad, J.C., Meyer, A.S. Identification of thermostable β -xylosidase activities produced by *Aspergillus brasiliensis* and *Aspergillus niger*. *Biotechnol. Lett.*, 2007; **29**: 743-8.
32. Bergquist, P., Te'o, V., Gibbs, M., Cziferszky, A., de Faria, F., Azevedo, M., Nevalainen, H. Expression of xylanase enzymes from thermophilic microorganisms in fungal hosts. *Extremophiles*, 2002; **6**: 177-84.
33. Fang, X.u., Yano, S., Inoue, H., Sawayama, S. Lactose enhances cellulase production by the filamentous fungus *Acremonium cellulolyticus*. *J. Biosci. Bioeng.*, 2008; **106**: 115-20.
34. Mach, R.L., Zeilinger, S. Regulation of gene expression in industrial fungi: *Trichoderma*. *Appl. Microbial Biotechnol.*, 2003; **60**: 515-22.
35. Saleem, F., Ahmed, S., Jamil, A., Isolation of a xylan degrading gene from genomic DNA library of a thermophilic fungus *Chaetomium thermophile* ATCC28076. *Pak. J. Bot.*, 2008; **40**: 1225-30.
36. Hrmová, M., Biely, P., Vrsanská, M. Specificity of cellulase and β -xylanase induction in *Trichoderma reesei* QM 9414. *Arch. Microbiol.*, 1986; **144**: 307-11.
37. Ferreria-Filho, E.X. The xylan degrading system. *Brasil. J. Med. Biol. Res.*, 1994; **27**: 1093-109.
38. Hrmová, N., Petraková, E., Biely, P. Induction of cellulose and xylan degrading enzymes in *Aspergillus terreus* by homo and heterodisaccharides composed of glucose and xylose. *J. Gen. Microbiol.*, 1991; **137**: 541-7.
39. Royer, J.C., Nakas, J.P. Interrelationship of xylanase induction and cellulase induction of *Trichoderma longibrachiatum*. *Appl. Environ. Microbiol.*, 1990; **56**: 2535-9.
40. Sachslehner, A., Nidetzky, B., Kulbe, K.D. and Haltrich, D. Induction of mannanase, xylanase and endoglucanase activities in *Sclerotium rolfsii*. *Appl. Environ. Microbiol.*, 1998; **64**: 594-600.
41. Bajpai, P. Microbial xylanolytic enzyme system: properties and applications. *Adv. Appl. Microbiol.*, 1997; **43**: 141-94.
42. Yang, Y.L., Zhang, W., Huang, J.D., Lin, L., Lian, H.X., Lu, Y.P., Wu, J.D., Wang, S.H. Purification and characterization of an extracellular xylanase from *Aspergillus niger* C3486. *Afr. J. Microbiol. Res.*, 2010; **4**: 2249-56.
43. Kluepfel, D., Vats-Mehta, S., Aumont, F., Shareck, F., Morosoli, R. Purification and characterization of a new xylanase (xylanase B) produced by *Streptomyces lividans* 66. *Biochem. J.*, 1990; **267**: 45-50.
44. Chantasingh, D., Pootanakit, K., Champreda, V., Kanokratana, P., Eurwilaichitr, L. Cloning, expression, and characterization of a xylanase 10 from *Aspergillus terreus* (BCC129) in *Pichia pastoris*. *Protein Express. Purif.*, 2006; **46**: 143-9.
45. Alexander, K., Iris, A., Yuval, S. Purification and characterization of a thermostable xylanase from *Bacillus stearothermophilus* T-6. *Appl. Environ. Microb.*, 1993; **59**: 1725-30.
46. Kelly, C.T., O'Mahony, M.R., Fogarty, W.M. Extracellular xylanolytic enzymes of *Paecilomyces varioti*. *Biotechnol. Lett.*, 1989; **11**: 885-90.
47. Krishnamurthy, S., Vithayathil, P.J. Purification and characterization of endo-1,4- β -xylanase from *Paecilomyces varioti* bainier. *J. Ferment. Bioeng.*, 1989; **67**: 77-82.
48. Tuohy, M.G., Coughlan, M.P. Production of thermostable xylan degrading enzymes by *Talaromyces emersonii*. *Bioresour. Technol.*, 1992; **39**: 131-7.
49. Ritschkoff, A.C., Buchert, J., Viikari, L. Purification and characterization of a thermophilic xylanase from the brown-rot fungus *Gloeophyllum trabeum*. *J. Biotechnol.*, 1994; **32**: 67-74.
50. Bennett, N.A., Ryan, J., Biely, P., Vrsanska, M., Kremnický, L., Macris, B.J., Kekos, D., Christakopoulos, P., Katapodis, P., Claeysens, M., Nerinckx, W., Ntauma, P., Bhat, M.K. Biochemical and catalytic properties of an endoxylanase purified from the culture filtrate of *Thermomyces lanuginosus* ATCC 46882. *Carbohydr. Res.*, 1998; **306**: 445-55.
51. Haltrich, D., Nidetzky, B., Kulbe, K.D., Steiner, W., Zupancic, S. Production of fungal xylanases. *Bioresour. Technol.*, 1996; **58**: 137-61.
52. Maheshwari, R., Bharadwaj, G., Bhat, M.K. Thermophilic Fungi: Their Physiology and Enzymes. *Microbiol. Mol. Biol. Rev.*, 2000; **64**: 461-88.
53. Collins, T., Meuwis, M.A., Stals, I., Claeysens, M., Feller, G., Gerday, C. A novel family 8 xylanase: functional and physico-chemical characterization. *J. Biol. Chem.*, 2002; **277**: 35133-9.
54. Sandrim, V.C., Rizzatti, A.C.S., Terenzi, H.F., Jorge, J.A., Milagres, A.M.F., Polizeli, M.L.T.M. Purification and biochemical characterization of two xylanases produced by *Aspergillus caespitosus* and their potential for kraft pulp bleaching. *Process. Biochem.*, 2005; **40**: 1823-8.