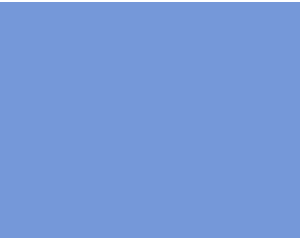


UN  **HABITAT**
FOR A BETTER URBAN FUTURE



Undertake City wide Informal Settlements Upgrading & Prevention Strategies/Plans

Session 2

Finance Strategy Toolkit - Dashboard

PSUP PPAB

Streamline policy decisions into an integrated city wide /national slum upgrading and prevention programme

Understand the magnitude of the need and available resources

Baseline

<p>Undertake City Wide Slum Upgrading & Prevention Strategies and Planning</p>	<p>Improve affordability and access to finance</p>	<p>Identify strategic interventions at different scale: Maximize cost benefit impact</p>	<p>Design subsidy/incentives to create enabling environment</p>
---	---	---	--

Scenario analysis

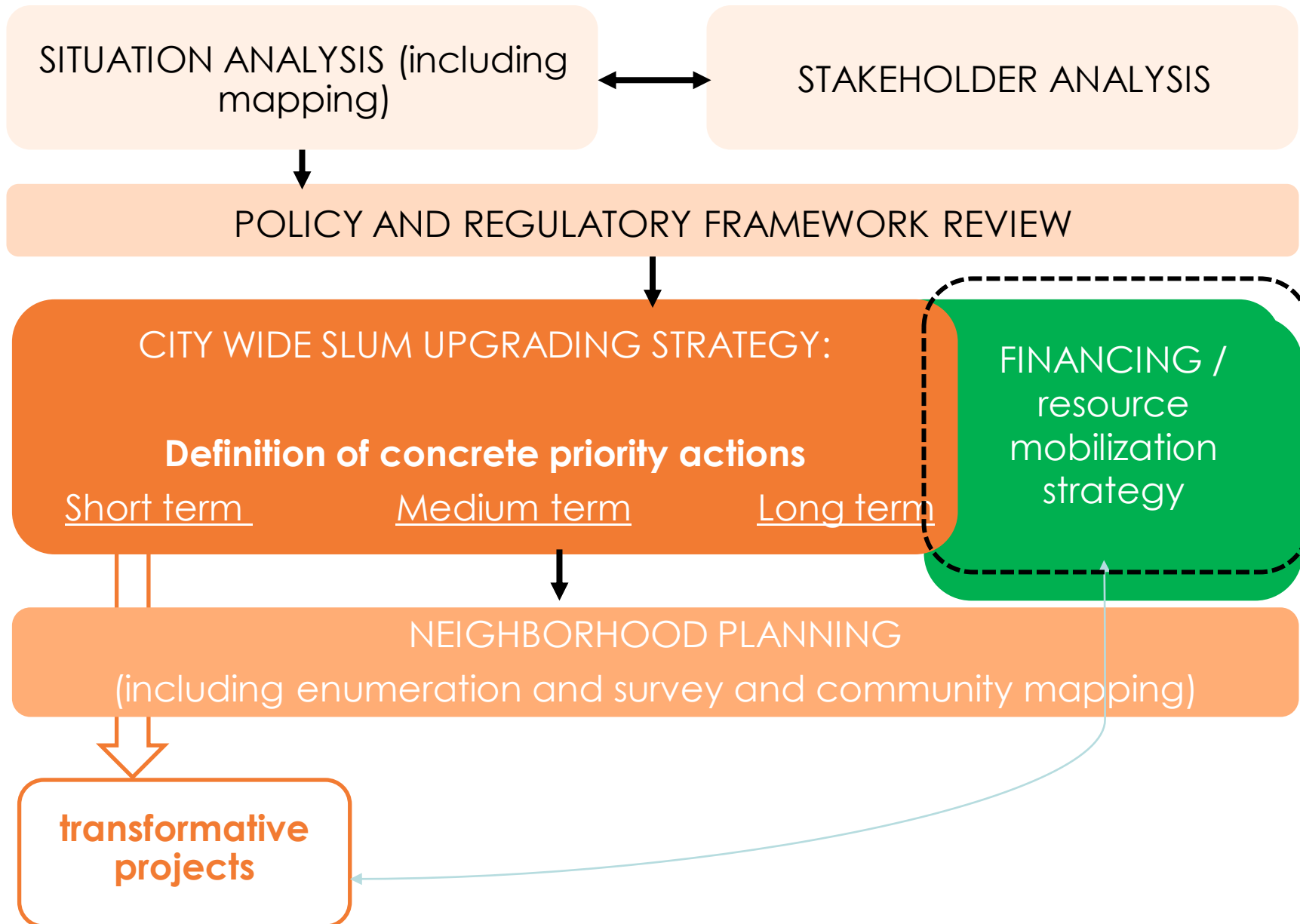
Establish a participatory governance structure and institutional arrangement to coordinate efforts and effective local delivery

Delivery

mechanism

Programme development & delivery

Citywide Informal Settlements Upgrading Strategy



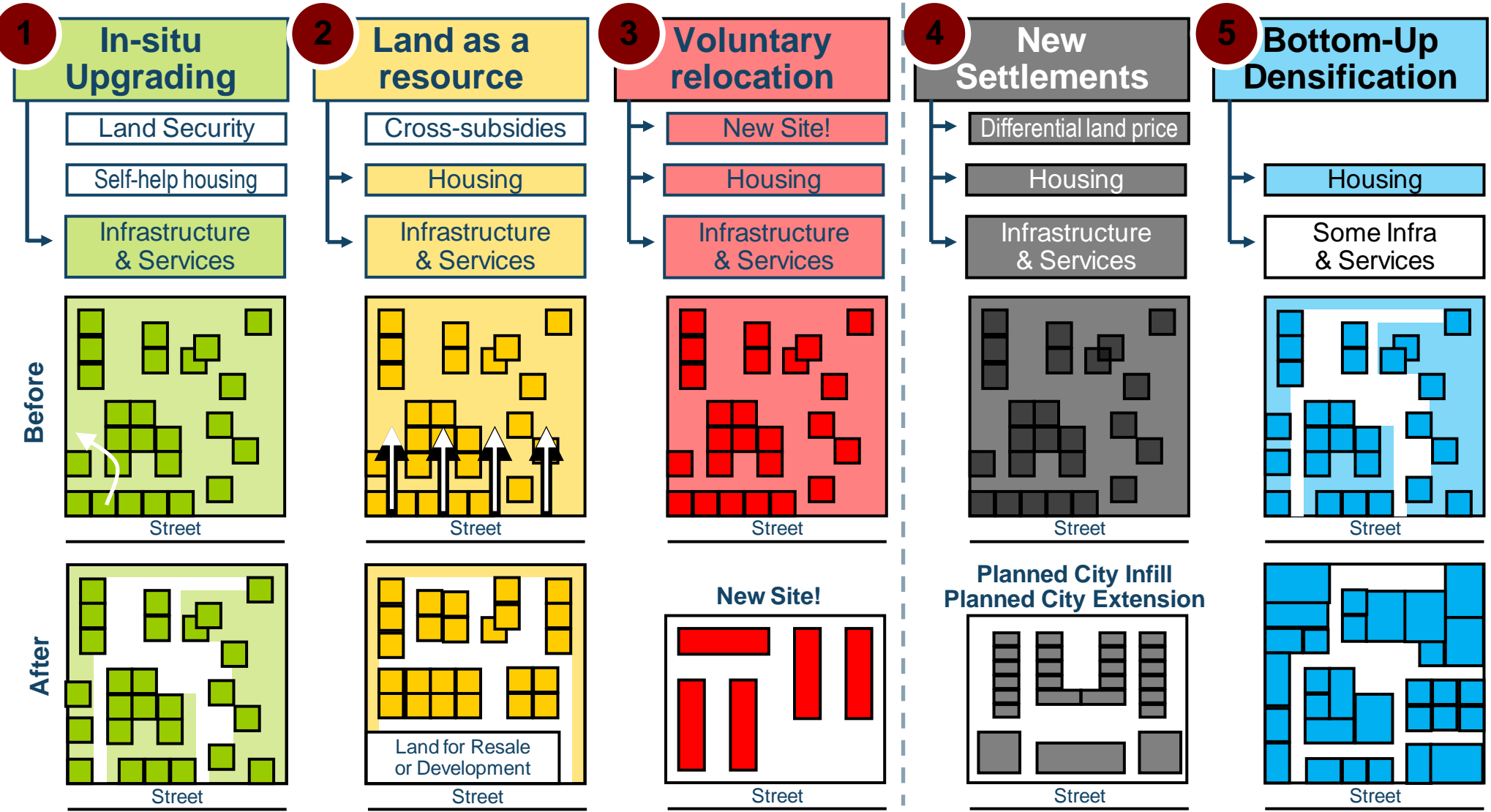
Neighbourhood Planning Principles

- **Provide (public/common good) multi-use space for socio-economic development (for livelihoods, cultural expression and social networks) and mobility**
- **Ensure equitable and efficient multi-level density and compactness**
- **Preserve/promote social mixed use and land use including the informal economy activities**
- **Ensure adequate blocks and preserve multiple land use**
- **Climate compatible slum upgrading and prevention**

Neighborhood Planning : Approaches to slum improvement & prevention

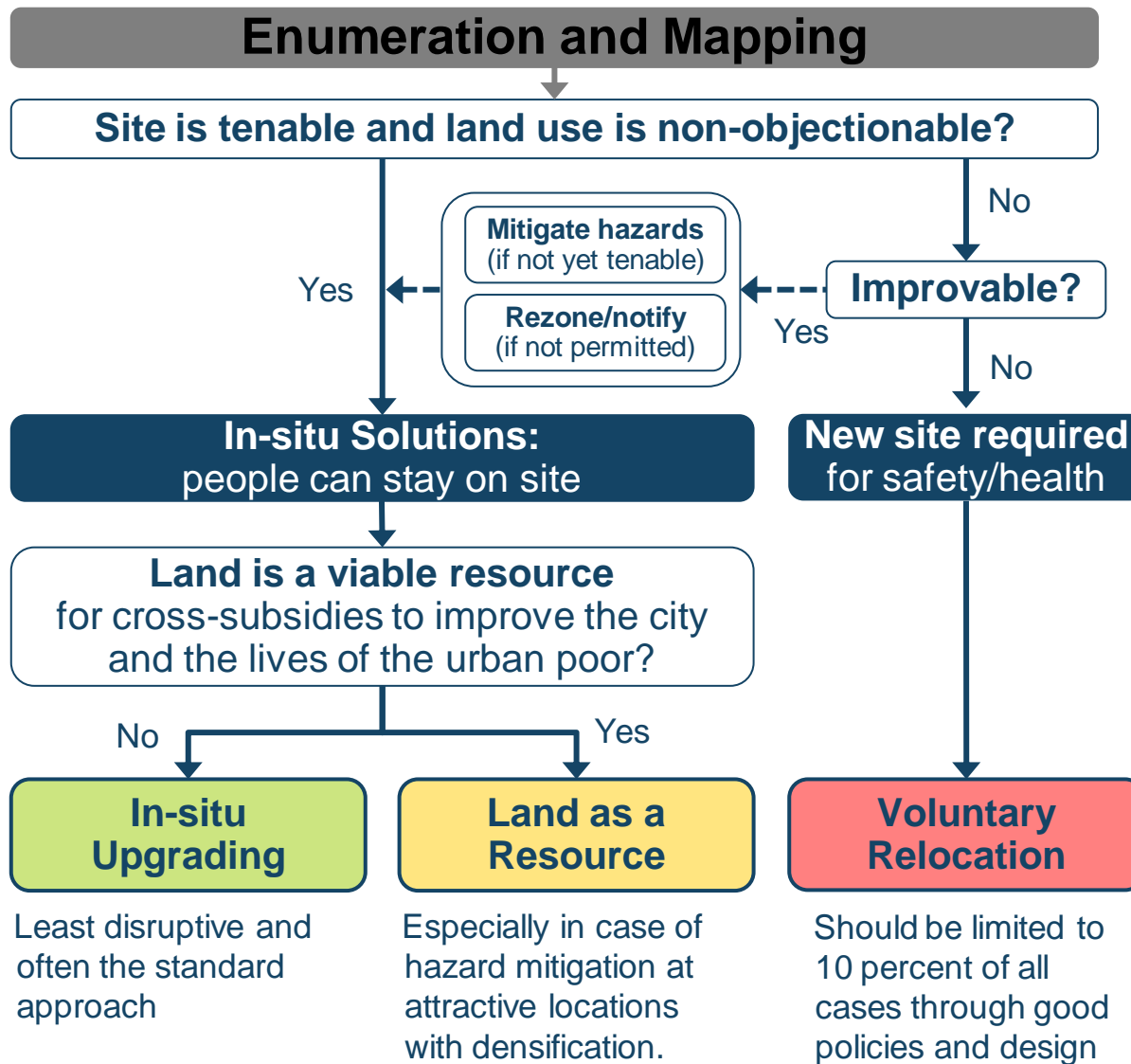
Slum Improvement

Slum Prevention



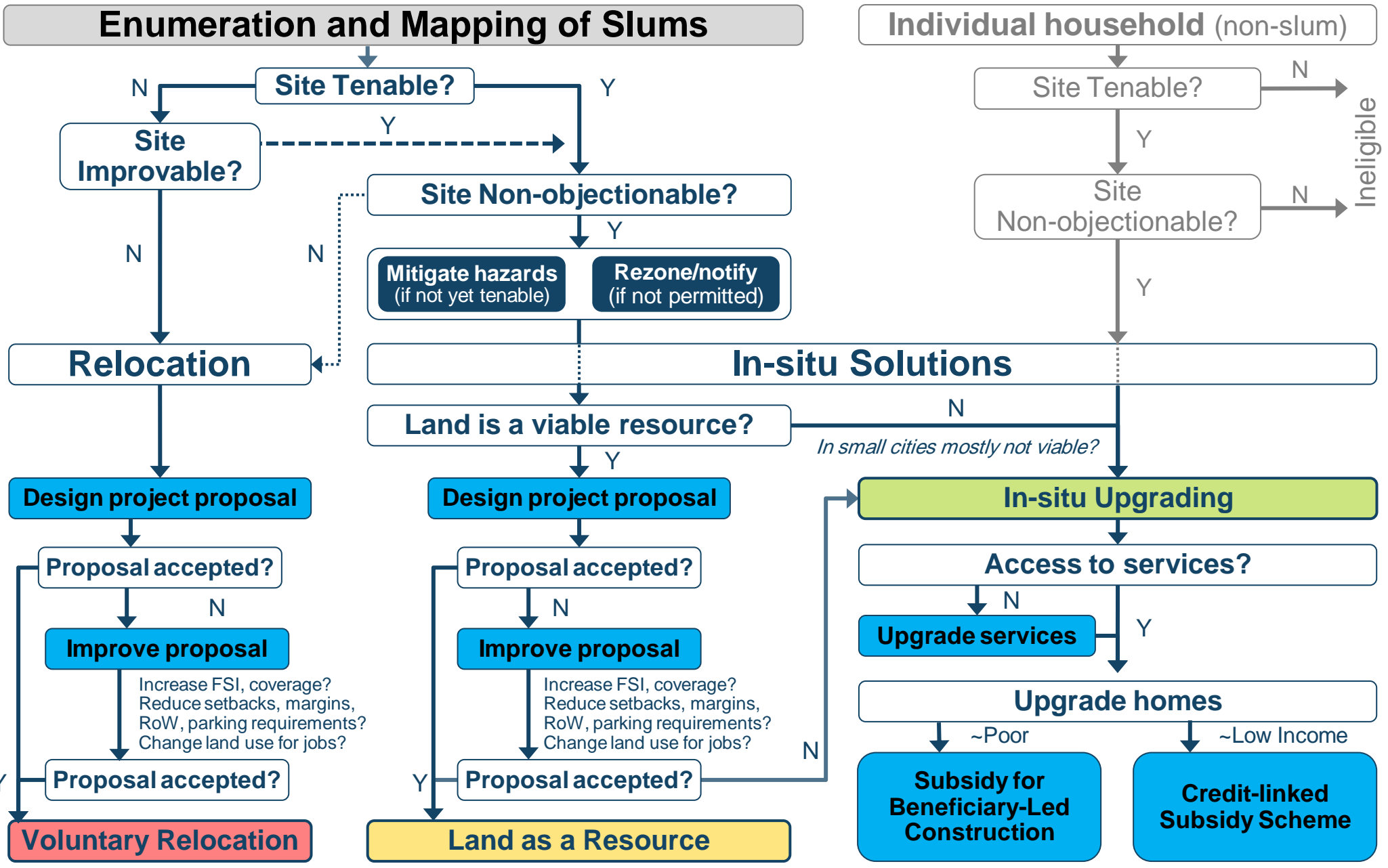
All approaches COMPLEMENT: Often any program will have mixed of them

Indication of the likely best-suited approach to slum improvement



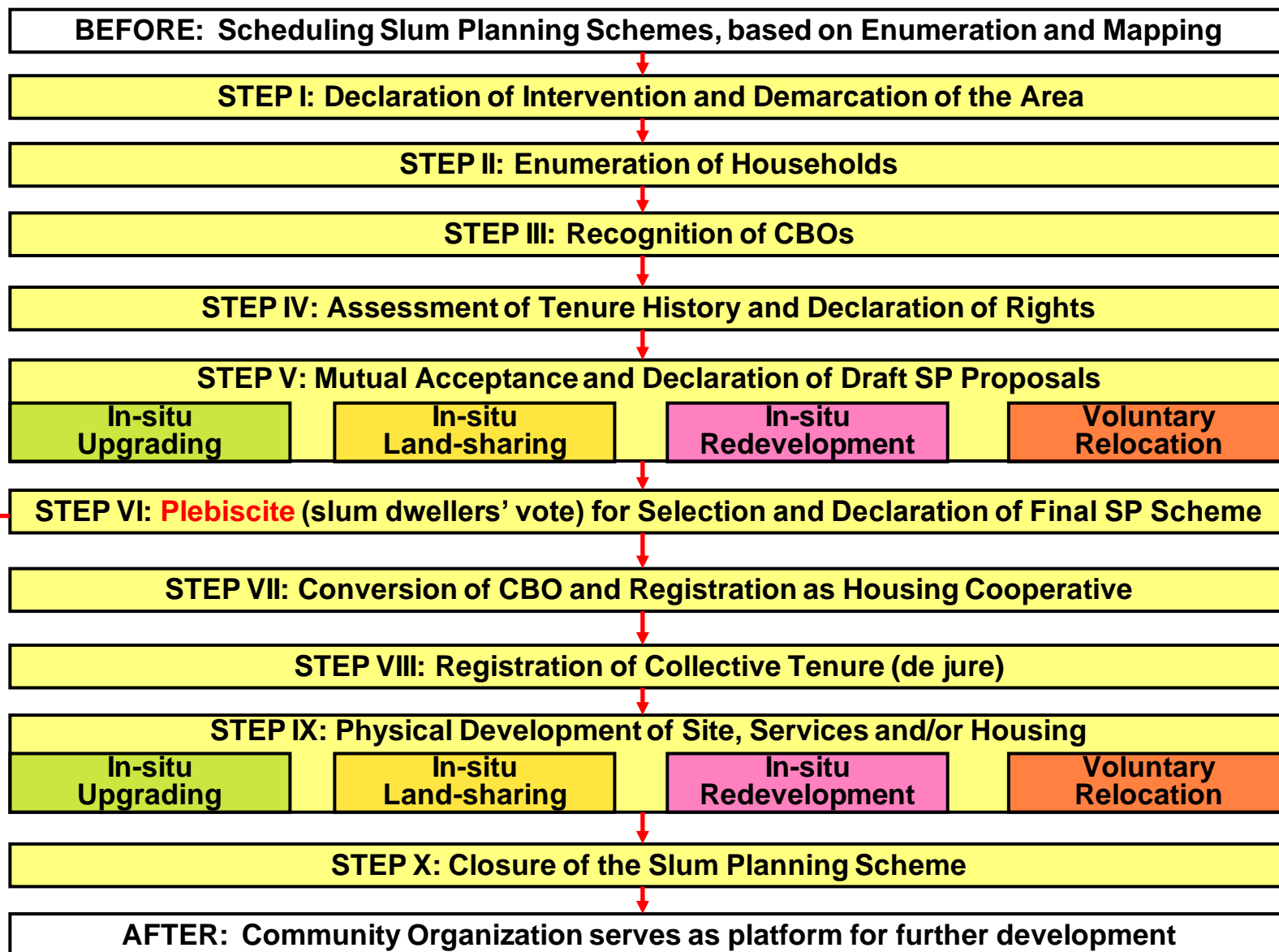
Decision Making Matrix (Example in India)

PSUP PPAB



Participatory Selection of the Slum Improvement Approach

Example:
 Institutionalizing a participatory slum improvement process



What should happen IF the people say 'NO' to all proposals?

Compulsory 20-20 Scheme: In-situ Upgrading with limited land title

Differentiating implications

All approaches are **COMPLEMENTS**: any program would consider mixed of them

Slum Improvement

Slum Prevention

Slum Improvement				Slum Prevention			
1,355,900				1,409,534			
Simple Upgrading		Land as a resource		New Settlements		Bottom-Up Densification	
50%		40%		60%		40%	
677,950		542,360		845,721		563,814	
		Relocation due to public purpose project		Planned City Infill (more central)		Planned City Extension (more peripheral)	
		10%		50%		50%	
		90%				↓	
677,950		542,360		422,860		422,860	
		13,559		122,031		563,814	

Each approach has specific implications in regard to planning, resource/finance (cost and revenue) and socioeconomic development!

YOUR TURN... DEBATE

Approaches:

1. What are the pros and cons of each approach?
2. Which approaches are known in your environment?
3. Which approaches are formally supported in public programs?
4. Which approaches are followed by private sector and/or communities?

Resources:

1. Which resources are required for realizing any of the approaches?
2. ...and which resources are available?
3. How could any resource gap be mobilized for any of the approaches?

Policy implications:

1. Which approaches would you suggest to consider where and when?
2. What is the best way for delivering them, who should be involved, how to coordinate?

Discuss in small groups. Then report back to the forum.