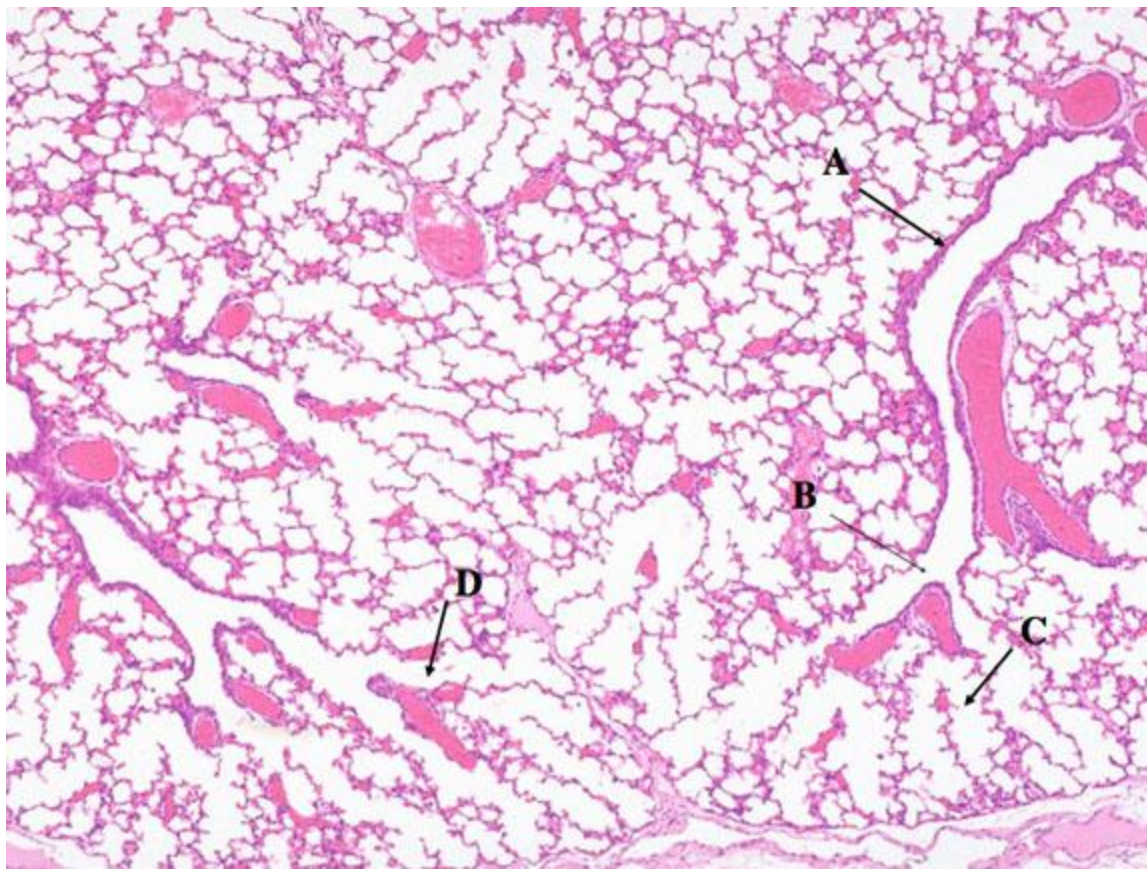


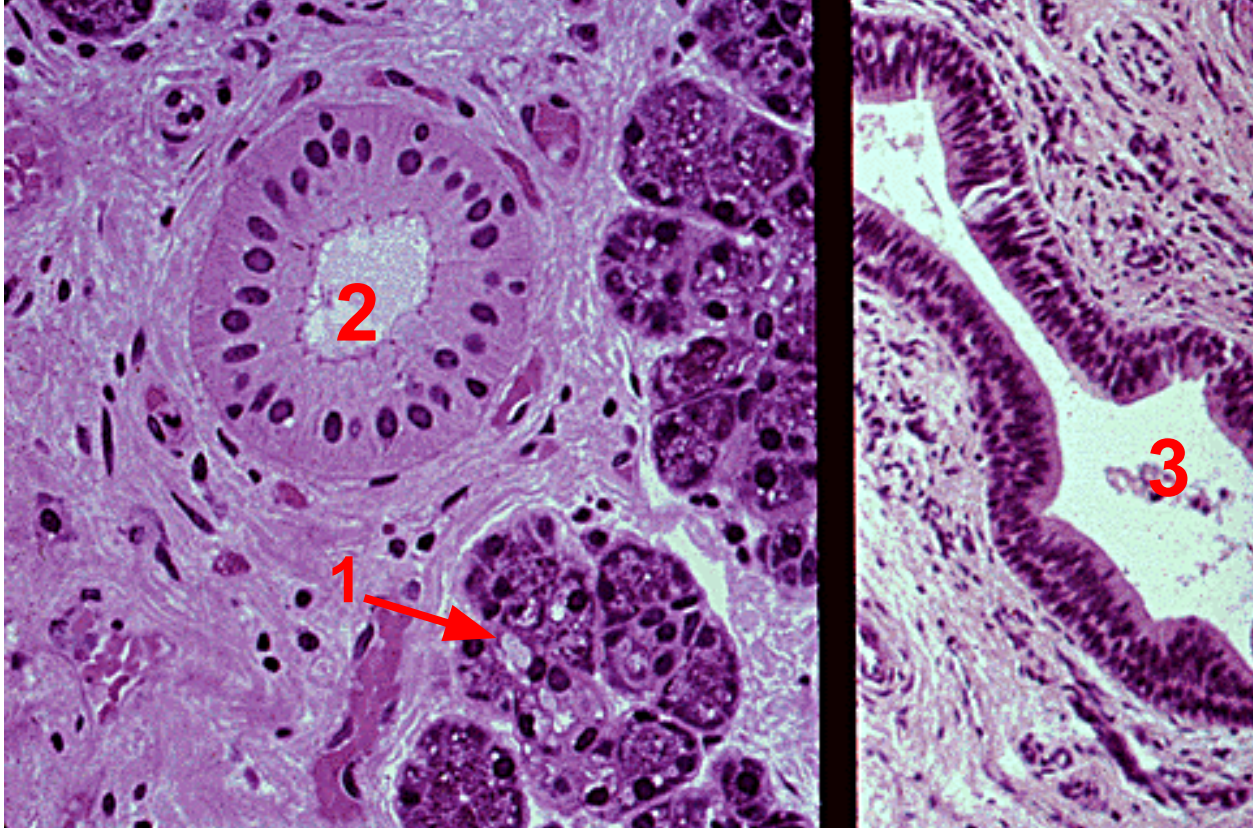
# **Weekly Exam “3”**

1



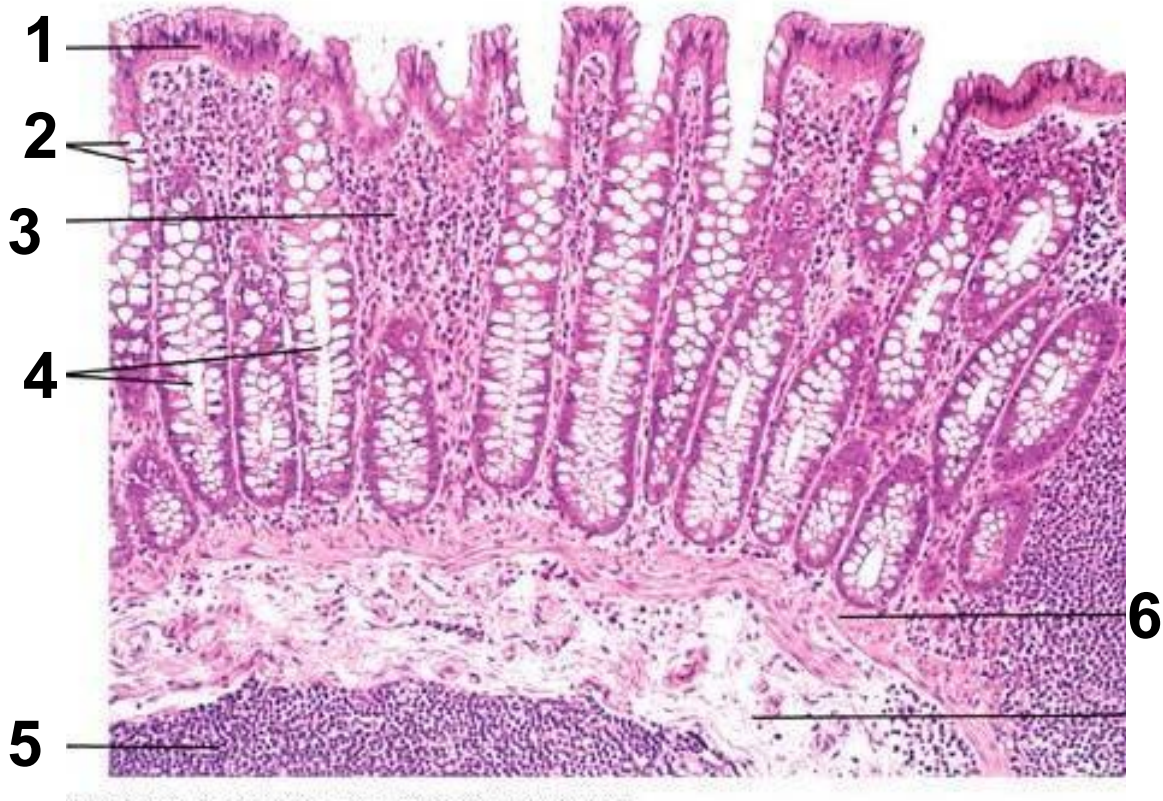
**Identify: A, B, C and D**  
**Mention the lining epithelium of each**

2



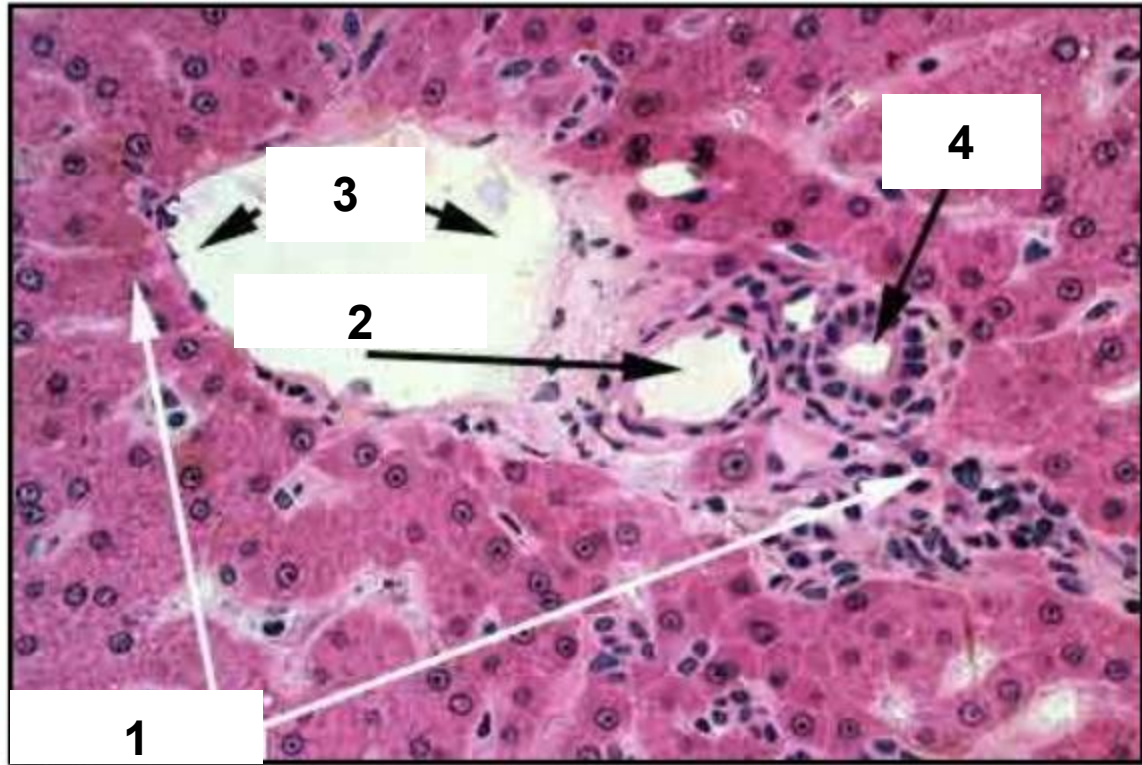
1- Identify the type of the acinus, mention one visible character  
2 and 3 Mention the name of the ducts and the lining epithelium of each

**3**

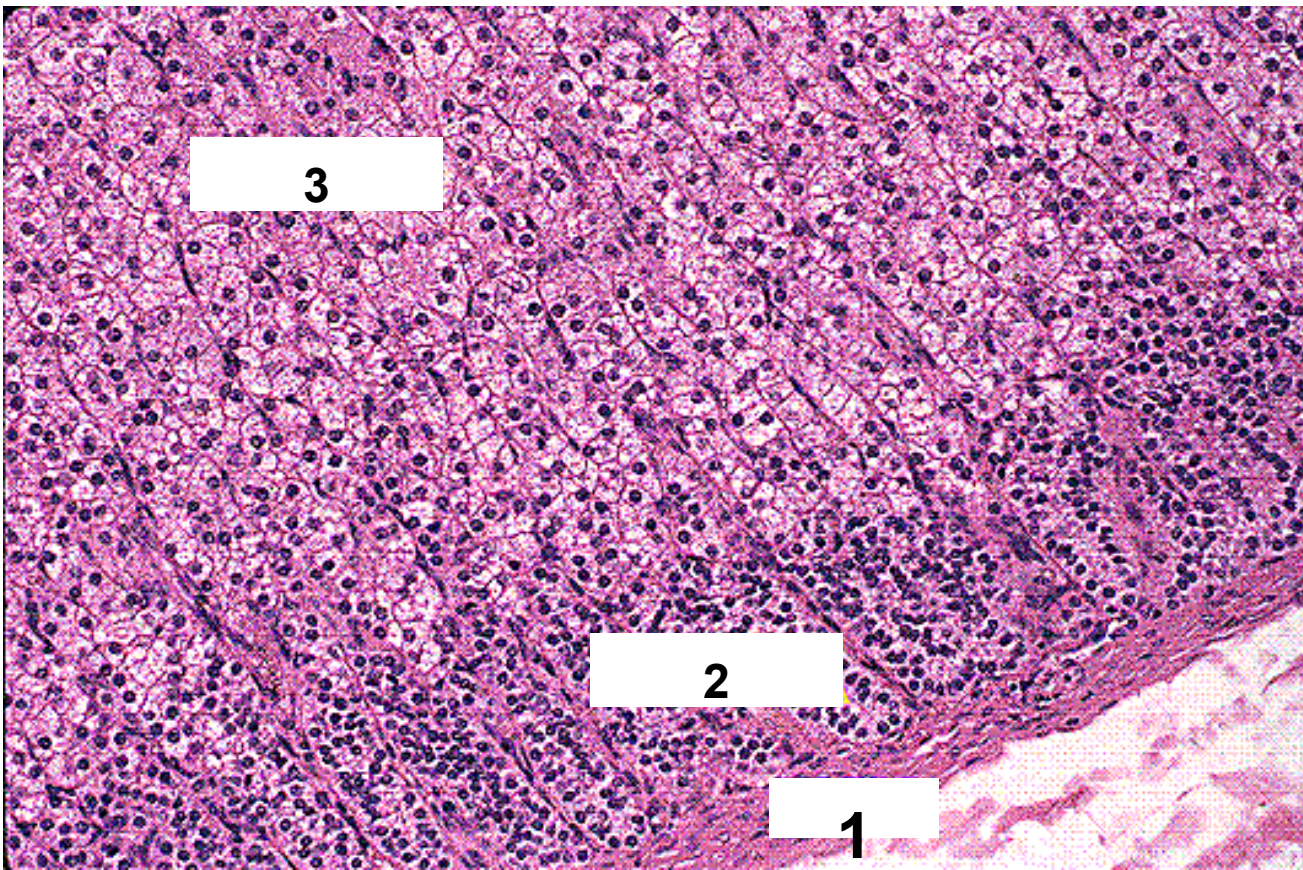


Identify:the organ, 1, 2, 3, 4, 5 and 6

4



Identify the organ, 1, 2, 3 and 4



**Identify the organ, be specific**

**Identify 1, 2 and 3 and mention the function of each**

# Answers

1- :A: Terminal Bronchiole B: Respiratory Bronchiole C: Alveolar Sac D: Alveolar Duct

2- 1- Serous acinus, parotid gland 2- striated duct, simple columnar epithelium 3- large excretory duct with stratified columnar epithelium

3- Large intestine, 1- absorptive columnar epithelium, 2- goblet cells,3- lamina propria, 4- crypts, 5- lymphoid nodule, 6- muscularis mucosa

4- liver, 1- portal tract, 2- branch of a hepatic artery, 3- branch of a portal vein, 4- bile duct

5- Suprarenal cortex, 1- capsule protection of the gland, 2- zona glumerulosa, secretion of mineralocorticoids 3- zona fasciculata secretion of glucocorticoids