



Evaluation of Club Foot in Working Donkeys

Mohamed Barakat Mostafa^{1*}, Ahamed Ismeal Abdelgalil¹ and Shaban Fayaz Farhat²

¹Department of veterinary Surgery, Anesthesiology and Radiology, Faculty of Veterinary Medicine, Cairo University, Giza, P.O. Box 12211- Egypt

²Egyptian Society for the Protection and Welfare of the Working Animals (ESPWWA) Cairo, Egypt

*Corresponding author's E-mail: mostafa1955ug@yahoo.com

ABSTRACT

Club foot deformities were studied in 22 donkeys working in brick kilns. Evaluation of hoof capsule was carried out on hard concrete surface. Changes on the hoof capsule were observed from dorsal aspect, lateral aspect, palmar/planter aspect and distal or solar surface. Dorsal hoof wall angle for each hoof (toe angle) was taken using hoof gauge. According to toe angle club foot was classified into three degrees. The first degree the toe angles less than ($<90^\circ$). The second degree the toe angles less or equal ($\leq 130^\circ$) and the third degree more than ($>130^\circ$). Club foot in donkeys displayed disparity, increased in heights and lengths associated with contracted heels. The digital cushion appeared atrophied associated with granulomatous inflammations. The third degree club foot revealed horn materials of sole, frog and digital cushion were destroyed and covered by hard keratin materials. The use toe angles for classification of club foot provide a reliable method. Radiography of the 3rd phalanx showed osteophytic and osteolytic changes. Soft tissue reaction and thickening with radio-opaque mass and calcification at palmar/planter structures were observed. Overworking, overloading and pain were considered the predisposing causes in brick kilns working donkeys.

Key words: Club foot, Deformities, Toe angle, Radiography, Donkey

INTRODUCTION

Egypt has about three millions of working donkeys and mules. They are carrying goods and people as well as work in brick kilns (Al-Salihi and Farhat, 2014). Club foot conformation in horses have a boxy hoof, thin flat soles, decrease in sole depth, concavity of the dorsal hoof wall, poor hoof wall consistency, toe cracks, hoof wall separation, white line disease and the musculotendinous shortening (Floyd and Mansmann, 2007; O'Grady, 2012). Club foot predisposed the horses to toe first landing, toe and quarter cracks, and dorsal wall flare, hoof wall separation (O'Grady and Dryden, 2012).

Several studies have been conducted on club foot etiology, diagnosis and treatment in horses (Stone and Merritt, 2009; O'Grady, 2014). However, to our knowledge, club foot in donkeys has not yet been studied. There is limited information about the orientation of the club foot in donkeys and radiographic effects on hoof structures. Therefore, the aim of the present study was to carry evaluation of club foot deformity in working donkeys to enable assessment of hoof management.

MATERIALS AND METHODS

Twenty-two donkeys were collected from El Saf brick kilns area from February 2017 to March 2018. A total of 29 hind hooves and three fore hooves showed club foot hoof deformities were examined during this study. This study was approved by the institutional animal care and use committee, Cairo University. These animals were selected on the basis of verbal informed owner consent.

Careful visual inspection and palpation of all hooves were performed according to (Ross and Dyson, 2011). Evaluation of donkey hoof capsule was carried out on hard concrete surface according to (O'Grady, 2013). Changes on the hoof capsule were observed from dorsal aspect, lateral aspect, palmar/planter aspect and distal or solar surface especial attentions were observed to the coronet and digital cushion. Dorsal hoof wall angle for each hoof (toe angle) was taken using hoof gauge (Souza et al., 2016).

Lateral radiographic views were taken. The foot was positioned on wooden block perpendicular to the ground and with equal weight bearing according to the method described by (Kummer et al., 2004). Radiographic exposure factors were 50 to 55 kV, 10 mAs and 90 cm focal film distance.

ORIGINAL ARTICLE
 pii: S232245681800008-8
 Received: 20 Oct 2018
 Accepted: 29 Nov 2018

RESULTS

Club foot in donkeys were classified in the present study into three degrees according to toe angle (mean± SE), the first degree the toe angles less than ($<90^\circ$) the mean was $77.6 \pm 1.8^\circ$. The second degree the toe angles less or equal ($\leq 130^\circ$) the mean was $106.3 \pm 3.5^\circ$ and the third degree more than ($> 130^\circ$) the mean was $150.3 \pm 7.00^\circ$. Bilateral hind club foot was diagnosed in 9 donkeys and unilateral in 8 hind limbs and 3 forelimbs.

The first degree of toe angle

The dorsal hoof wall appeared straight, convex or even segmented into two parts (Figure 1). The coronary band slope from dorsal hoof wall to heel appeared normal or migrated or concave in shape at the quarters or heel areas (Figure 1). The dorsal coronary band slightly bulged with marked wearing of the toe due to dragging. The loaded side of the hoof wall appeared rolled under and nearly straighter. The unloaded side appeared curved and flared side showed quarter cracks (Figure 2). Unsymmetrical ground surfaces. Atrophied frog migrated backward, out of bearing weight, contracted heels and the center groove of the frog is deep and extended to the coronary band hair line (Figure 3). Disparity in the two heels (Figure 4) and increased in lengths and heights with deep fissure at the base of the frog.



Figure 1. First degree club foot 14 years donkey showing dorsal hoof wall segmented into two parts, contracted heels and frog and the frog out of bearing weight (black arrow).

Figure 2. First degree club foot 9 years, the coronary band is not parallel to the ground surface (red arrow), the loaded side is straight (black arrow), the unloaded side is curved (yellow arrow).

Figure 3. First degree club foot 17 years, unsymmetrical ground surface, contracted, backward migrated and deep fissure at the base of frog (blue arrow), loaded heel is rolled under (yellow arrow) and the unloaded is fared (red arrow).

Figure 4. First degree club foot 14 years donkey, disparity heels with deep fissure at the base of the frog (yellow arrow).

The second degree of toe angle

The dorsal hoof wall was increased in lengths with wearing, damaged, cracks, hoof wall separation and quarter cracks. The overloaded toe appeared damaged (Figure 5). The dorsal coronary band is bulged, lost the slope, appeared parallel to the ground surface, concave in shape, with proximal migration at the medial and lateral quarters, with sever tension and pain on the common digital flexor tendon. The heels contracted and increased in heights and lengths. Fissures in the bulb of the heels with granulomatous inflammation involved the frog and skin of the pastern. Atrophied frog, the lateral and medial sulci of the frog extended backward associated with deep fissure in the central sulcus of the frog extended to the hair line of the coronary band (Figure 6). The solar surface appeared deformed, square in shape and lost its normal shape. The frog deformed, lost the normal wedge shape with widening, deep lateral and medial sulci and migrated backward (Figure 7).

The third degree of toe angle

The entire ground surface of the foot is out of the weight bearing surface, landing and loading mainly on the dorsal wall surface or pastern during walking. The hoof wall showed wearing fragmented and separated. The coronary band appeared bulged, concave and contact with the ground surface during walking associated with proximal migration above the medial and lateral quarters and heels (Figure 8). There was marked increased of the heel height and lengths. The frog lost wedge shape and deformed. The central sulcus of the frog appeared as long narrow fissure and extended up to mid palmar/planter pastern above the base of the frog (Figure 9). The solar surface appeared square or irregular in shape. The horn materials of sole, frog and digital cushion were completely disappeared or destroyed and covered by hard keratin materials (Figure 10).



Figure 5. Second degree club foot 16 years, damaged and cracks of overloaded toe (yellow arrow), granulomatous inflammation at the base of frog, heels and the pastern (red arrow).

Figure 6. Second degree club foot 13 years, the digital cushion is atrophied (red arrow), contracted heels (yellow arrow), the lateral grooves is wider (blue arrow), the central sulcus extended to the hair line (black arrow).

Figure 7. Second degree club foot 13 years, the solar surface is deformed, square in shape (red line), the frog lost shape (yellow arrow) and widening deep lateral sulci (green arrow).

Figure 8. Third degree club foot 19 years, the coronary band concave in shape (red line), dorsal coronary band contact with the ground (yellow arrow), frog migrated rear (blue arrow).

Figure 9. Third degree club foot 19 years, frog and digital cushion out of bearing surface. The central sulcus appeared long narrow and extended to mid planter pastern (red arrow).

Figure 10. Third degree club foot 19 years; solar surface became deformed, square and lost wedge shape (red arrow).

Radiographic evaluation of club foot

The 1st degree club foot showed osteophyte reactions at the proximo-dorsal aspect of the first phalanx. Osteolytic changes were appeared at navicular bone and third phalanx associated with palmar/planter soft tissues reactions (Figure 11). The 2nd degree club foot, radiographic changes displayed osteophyte reactions at dorso-distal aspect of the third metacarpal/metatarsal aspects and at the capsule of fetlock joint with narrowing the joint space. Palmar/ planter soft tissues thickening associated with osteophyte reaction of the navicular bone and at dorsal aspect of the second phalanx. The dorsal aspect of the third phalanx revealed osteolytic changes with decreased radio-opacity (Figure 12). The 3rd degree club foot revealed soft tissue reaction and thickening at the palmar / planter aspect of the distal limb with marked radio-opaque masses and calcification of palmar / planter structures. Osteophyte reaction was seen at the navicular bone, the dorsal aspect of 2nd phalanx and proximo-distal aspect of 3rd phalanx. The distal dorsal aspect of the 1st phalanx had osteophytic reactions with calcification of pastern joint. The 3rd phalanx showed osteolytic reaction at the dorsal, distal and at the tip of 3rd phalanx (Figure 13).



Figure 11. (First degree): Lateromedial radiography revealed palmar radiodense mass (black star).



Figure 12. (Second degree): Lateromedial radiography revealed palmar radiodense mass (black star), osteophyte reaction at the dorsal wall of the Third phalanx (white arrow) with radiolucent zone within the disto dorsal aspect (the tip) of the Third phalanx (black arrow).

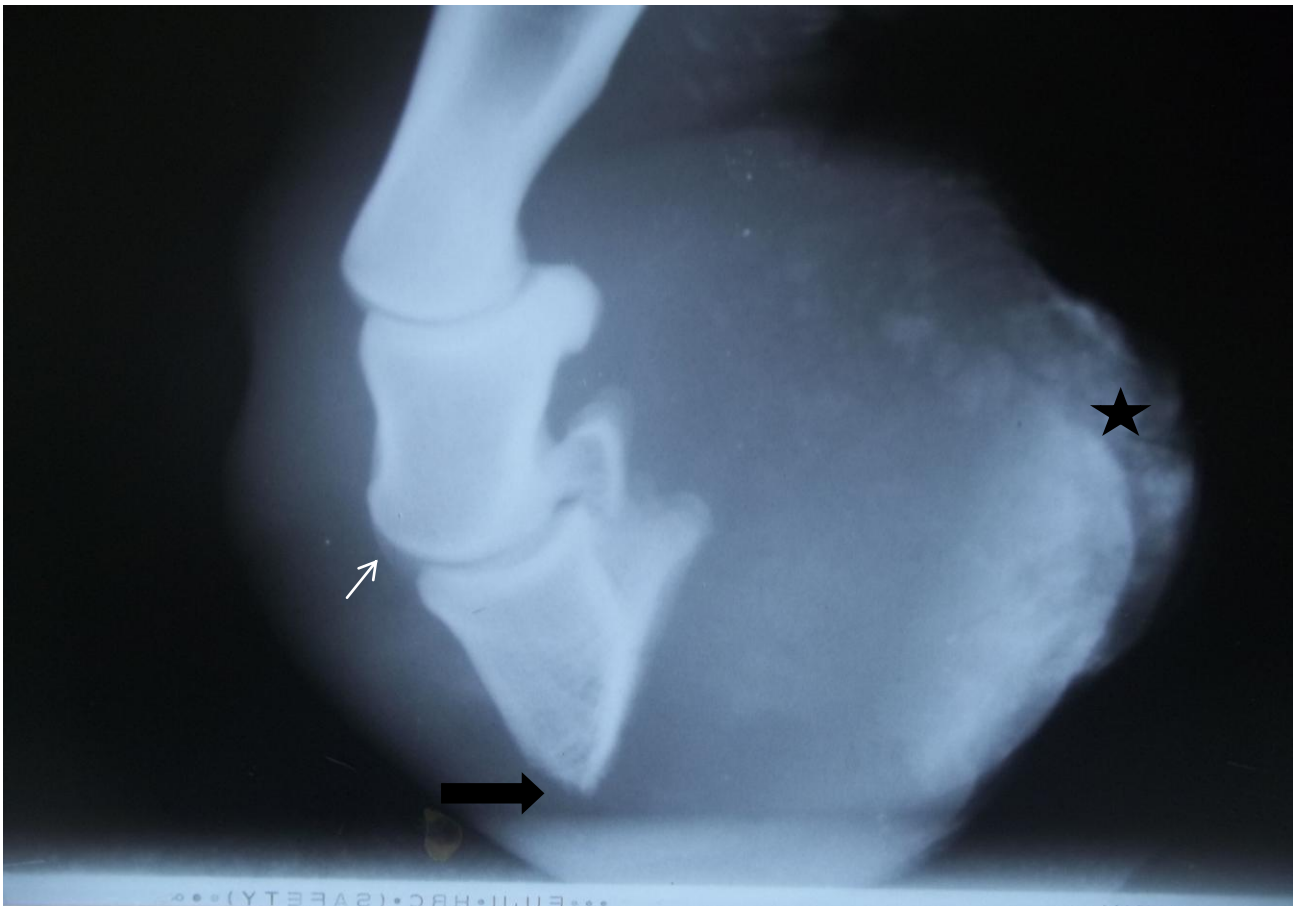


Figure 13. (Third degree): Lateromedial radiography revealed palmar radiodense mass (black star), osteophyte reaction at the distodorsal aspect of the Second phalanx (white arrow) with radiolucent osteolytic change at the disto dorsal aspect of the Third phalanx (bone loss at the tip of Third phalanx) (black arrow).

DISCUSSION

Club foot or Flexural deformity of the distal interphalangeal joint in horses can occur congenitally or acquired later in life due to overload, injury, environmental factors, or farriery practices (Hunt, 2011, Redden, 2014 and Curtis, 2017). Donkey club foot in the present study had three degrees according to measured toe angle. Increased heel heights and lengths, the loaded heels rolled under and the unloaded heels was flared, contracted heels, the digital cushion and frog atrophied and migrated back ward, the coronary band displaced, concave in shape or nearly parallel to the ground surface and dorsal coronary band bulged, hoof wall separations and toe and quarter cracks with wearing were the constant findings. In this respect, similar findings have reported in the horses (O'Grady and Dryden, 2012; O'Grady, 2014; Floyd and Mansmann, 2007; Redden, 2014) in horses. However, club foot in donkeys showed specific findings, the bulb of the heels and base of frog have deep fissures and the central sulcus appeared deep narrow and extended to the hair line. The digital cushion appeared contracted, atrophied associated with granulomatous inflammations. The horny materials of sole, frog and digital cushion were completely disappeared or destroyed and covered by hard keratin materials. These results were contradictory with the findings obtained in horses (O'Grady and Dryden, 2012) in the horses

Several classifications of clubfoot in horses have been reported (Redden, 2003; O'Grady, 2014) they classified club foot or flexural deformity into four grades depending on toe angle opposite to the healthy foot. In the present investigation donkey club foot was classified into three degrees based on the toe angles. The use toe angles for classification of club foot provide a reliable method in donkey due to 9 (41%) donkeys in the present study have bilateral, 8 donkeys unilateral and one had triple club foot deformities. Therefore, the use of opposite limb in the present study is unreliable.

Congenital and acquired club foot were reported and attributed to nutritional imbalance, trauma, improper trimming, persistent musculotendinous contractions of deep digital flexor muscle and pain (Redden, 2014). Club foot in this study could be attributed to stress and pain from hard work during pulling overloaded carts laden with bricks to and from the firing ovens of the brick kilns along the day. Therefore, overworking, stress and pain were considered the predisposing causes. However, acquired club foot in horses may be secondary to chronic lameness or injury (Hunt, 2011).

Club foot in donkeys displayed disparity, increased in heights and lengths associated with contracted heels. The dorsal hoof wall was landing and loading on the ground, wearing fragmented, toe and quarter cracks with hoof wall

separations are common findings. Similar observations have been mentioned previously in horses (Floyd and Mansmann, 2007; O'Grady et al., 2007; Redden, 2014). They reported increased heel growth, raised heels, lead to distal interphalangeal joint flexion altered the distal phalanx alignment, prompts the toe first landing at the dorsum of the foot predisposed to excessive wear, toe and quarter cracks due to lack of adequate horn protection. Moreover, O' Grady et al. (2007) stated that club foot altered biomechanics of the foot result in an increased load being placed on the dorsal section of the foot during landing.

Previous studies proved changes hoof shape in club foot influenced by differing hoof growth rates at various sites around the hoof capsule lead to the hoof wall at the heels growing faster than the toe (Faramarzi et al., 2009), the viscoelastic composite of tubular and inter tubular horn (Dyson et al., 2011), plastic compression (Hood et al., 2001). In addition, the factors influencing changes in hoof capsule shape are thought to be associated with; hoof growth, wear at the bearing border, farriery, plastic deformation and normal weight-bearing and loading (Curtis, 2017). Therefore, the changes in the hoof capsule shapes in the present study could be attributed to multifarious agents mainly overloading, hoof compression, farriery, plastic deformation and hoof growth.

Collins et al. (2011) mentioned that donkey radiography is important for diagnosis of the internal relationships of the osseous structures of the foot and the distal phalanx and subjective assessment of the minor changes, as well as the relationship between the distal phalanx and the hoof capsule (Dyson et al., 2011). Several studies support that radiography foot conformation in horses had lapping and/or bone demineralization of the coffin bone due to the abnormal pressure distribution at the level of the apex of the third phalanx which compresses the blood supply that nourishes it (Redden, 2014; O'Grady and Dryden, 2012). The current findings observed osteophytic and osteolytic in the 3rd phalanx in club foot donkeys. Furthermore, previous guidance on foot conformation in the horses influences the forces acting on the structures in the foot, especially the deep digital flexor tendon, the navicular bone and the distal interphalangeal joint pathology (Wilson and Weller, 2011; Eliashar et al., 2004; Moleman et al., 2006; Holroyd et al., 2013). Similar findings have been seen in deep digital flexor tendon, navicular bones and osteoarthritis in fetlock joints in club foot donkeys supported the same reported in horses.

CONCLUSION

Club foot in donkeys displayed disparity, increased in heights and lengths associated with contracted heels. The central sulcus appeared deep narrow and extended to the hair line. The digital cushion appeared atrophied associated with granulomatous inflammations. The horn materials of sole; frog and digital cushion were destroyed and covered by hard keratin materials in the 3rd degree club foot. The use toe angle for classification of club foot provides a reliable method in donkey. Overworking, stress and pain were considered the predisposing causes in donkeys.

DECLARATIONS

Acknowledgment

We are grateful for the help and assistance received from the staff of Egyptian society for the protection and welfare of the working animals (ESPWWA) and the donkey sanctuary United Kingdom.

Competing interests

The authors have declared that no competing interest exists.

Authors' contribution

M.B. Mostafa was responsible for design, study execution, interpretation and preparation of the manuscript. A.I. Abdelgalil was responsible for data collection, radiographic interpretation and writing the manuscript. S. Farhat was responsible for execution.

REFERENCES

- Al-Salihi KA and Farhat SF (2014). The Society for the Protection and Welfare of Donkeys and Mules in Egypt "SPWDME": An overview. *Mirror of research in veterinary science and animals*, 3 (3):1-5.
- Collins SN, Dyson SJ, Murray RC, Burden F and Trawford A (2011). Radiological anatomy of the donkey's foot: Objective characterisation of the normal and laminitic foot. *Equine Veterinary Journal*, 43(4): 478-486.
- Curtis SJ (2017). The effect of loading upon hoof wall growth and hoof shape in the Thoroughbred foal. PhD Thesis, University of Central Lancashire in collaboration with Myerscough College.
- Dyson S J, Tranquille CA, Collins SN, Parkin TDH and Murray RC (2011). External characteristics of the lateral aspect of the hoof differ between non-lame and lame horses. *The Veterinary Journal*, 190: 364-371.
- Eliashar E, McGuigan MP and Wilson AM (2004). Relationship of foot conformation and force applied to the navicular bone of sound horses at the trot. *Equine Veterinary journal*, 36: 431-435.
- Faramarzi B, Thomason JJ and Sears WC (2009). Changes in growth of the hoof wall and hoof morphology in response to regular periods of trotting exercise in 112 Standardbreds. *American Journal of Veterinary Research*, 70: 1354-1364.

- Floyd A, Mansmann R (2007). *Equine Podiatry*; Elsevier Health Sciences: Philadelphia, PA, USA; p. 480.
- Kummer M, Geyer H, Imboden I, Auer J and Lischer C (2006). The effect of hoof trimming on radiographic measurements of the front feet of normal Warmblood horses. *The Veterinary Journal*, 172: 58-66.
- Moleman M, Van Heel MCV, van Weeren PR and Back W (2006). Hoof growth between two shoeing sessions leads to a substantial increase of the moment about the distal, but not the proximal, interphalangeal joint. *Equine Veterinary Journal* 38, 2: 170-174.
- Holroyd K, Dixon JJ, Mair T, Bolas N, Bolt D M, David F and Weller R (2013). Variation in foot conformation in lame horses with different foot lesions. *Equine Veterinary journal*, 195 (3): 361-365.
- Hood D M, Taylor D and Wagner IP (2001). Effects of ground surface deformability, trimming, and shoeing on quasistatic hoof loading patterns in horses. *American Journal of Veterinary Research*, 62: 895- 900.
- Hunt RJ (2012). Farriery for the hoof with low or underrun heels. *Veterinary Clinics of North America: Equine Practice*, 28(2): 351-64.
- O'Grady SE, Parks AH, Redden RF, Turner TA (2007). A Glossary of Therapeutic Farriery Terms. *Equine Veterinary Education*, Vol19: 263-271.
- O'Grady SE and Dryden VC (2012). Farriery for the Hoof with a High Heel or Club Foot. *Veterinary Clinics of North America: Equine Practice*, 28(2): 365-379.
- O'Grady SE (2013). How to Evaluate the Equine Hoof Capsule, *American Association of Equine Practitioners*. pp. 54-61.
- O'Grady SE (2014). How to manage the club Foot-Birth to Maturity, Lameness examination and therapy, Vol. 60/AAEP Proceedings.
- Redden RF (2003). Hoof capsule distortion: Understanding the mechanisms as a basis for rational management." *Veterinary Clinics of North America*, 19: 443-462.
- Redden RF (2014). How to Identify, Classify and Manage Club Feet. Written and presented August 2014. *Equine Podiatry* 101. Images property of www.nanric.com. Copyright © 2002-2016 Nanric.
- Ross MW and Dyson SJ (2011). Chapter 1 Lameness examination: historical perspective; Chapter 7 Movement. The lameness score: quantification of lameness severity; Chapter 26 Clinical investigation of foot pain. In: *Diagnosis and management of lameness in the Horse*, 1st edn., Eds: MW Ross and SJ Dyson, WB Saunders, Philadelphia, Pennsylvania. pp. 3-242.
- Souza AF, Kunz JR, Laus R, Moreira MA, Muller TR and Fontequé JH (2016). Biometrics of hoof balance in equids. *Arquivo Brasileiro de Medicina Veterinária e Zootecnia*, 68: 825-831.
- Stone WC Merritt K (2009). A review of the etiology, treatment and a new approach to club feet, in *Proceedings. American Association Equine Practice Focus on the Equine Foot*. pp. 181-190.
- Wilson A and Weller R (2011). The biomechanics of the Equine Limb and its effect on lameness. In: *Diagnosis and management of lameness in the horse*, Eds: MW Ross and SJ Dyson, WB Saunders Co., Philadelphia, pp. 270-289.