

Changes in DNA Methylation Levels and Nuclear Distribution Patterns after Microspore Reprogramming to Embryogenesis in Barley

Ahmed-Abdalla El-Tantawy · María-Teresa Solís · María C. Risueño
Pilar S. Testillano

Pollen Biotechnology of Crop Plants Group, Centro de Investigaciones Biológicas, (CIB) CSIC, Madrid, Spain

Key Words

Chromatin · Epigenetics · Generative cell · *Hordeum vulgare* · Male germline · 5-Methyl-deoxycytidine · Microspore totipotency · Pollen embryogenesis · Sperm cells · Vegetative cell

Abstract

Under specific stress treatments, the microspore can be induced in vitro to deviate from its gametophytic development and to reprogram towards embryogenesis, becoming a totipotent cell and forming haploid embryos. These can further regenerate homozygous plants for production of new isogenic lines, an important biotechnological tool for crop breeding. DNA methylation constitutes a prominent epigenetic modification of the chromatin fiber which regulates gene expression. Changes in DNA methylation accompany the reorganization of the nuclear architecture during plant cell differentiation and proliferation; however, the relationship between global DNA methylation and genome-wide expression patterns is still poorly understood. In this work, the dynamics of global DNA methylation levels and distribution patterns were analyzed during microspore reprogramming to embryogenesis and during pollen development in *Hordeum vulgare*. Quantification of global DNA methylation levels and 5-methyl-deoxycytidine (5mdC) im-

munofluorescence were conducted at specific stages of pollen development and after reprogramming to embryogenesis to analyze the epigenetic changes that accompany the change of developmental program and cell fate. The results showed low DNA methylation levels in microspores and a high increase along pollen development and maturation; an intense 5mdC signal was concentrated in the generative and sperm nuclei whereas the vegetative nucleus exhibited a weaker DNA methylation signal. After inductive stress treatment, low methylation levels and faint 5mdC signals were observed in nuclei of reprogrammed microspores and 2–4-cell proembryos. This data revealed a global DNA hypomethylation during the change of the developmental program and first embryogenic divisions. This is in contrast with the hypermethylation of generative and sperm cells of the male germline during pollen maturation, suggesting an epigenetic regulation after induction of microspore embryogenesis. At later embryogenesis stages, global DNA methylation progressively increased, accompanying embryo development and differentiation events like in zygotic embryos, corroborating that DNA methylation is critical for the regulation of gene expression in microspore embryogenesis.

© 2014 S. Karger AG, Basel

A.-A.E.-T. and M.-T.S. contributed equally to this work.

After specific stress treatments, the in vitro-cultured microspore at the vacuolated developmental stage [González-Melendi et al., 1995] can reprogram and initiate an embryogenesis program producing multicellular embryos. Homozygous plants can further be regenerated from the embryos for the production of new isogenic lines, which are important biotechnological tools for crop breeding. After the external stress signals, the microspore becomes a totipotent cell because it can develop into an embryo and subsequently an entire plant, thus acquiring the potential and embryogenic competence to give rise to all the cell types, tissues and organs that make up the plant body [Verdeil et al., 2007; Grafi et al., 2011]. In barley, microspore embryogenesis has been induced in microspore in vitro cultures by cold and starvation stress treatments [Kasha et al., 2001; Coronado et al., 2005; González-Melendi et al., 2005; Rodríguez-Serrano et al., 2012].

Isolated microspore cultures constitute very convenient systems to analyze the subcellular mechanisms underlying cell reprogramming, totipotency acquisition and subsequent embryo formation. In recent years, the presence of genes and molecules controlling early embryogenic events has increasingly been reported, but knowledge on the genetic control of the process and the possible involvement of external factors regulating embryo growth and development is still scarce [El-Tantawy et al., 2013]. Little is known about the mechanisms that induce the de-differentiation of a single somatic cell into a totipotent embryogenic cell. Several reports have related totipotency of cells to an open chromatin conformation characterized by large nuclei and homogenous euchromatin [Grafi et al., 2011]. There is increasing evidence that numerous processes of development and differentiation in both plants and animals are accompanied by chromatin remodeling [Kouzarides, 2007]. Stress-induced plant cell reprogramming involves changes in global genome organization, the epigenetic modifications being key factors of genome flexibility [Arnholdt-Schmitt, 2004; Solís et al., 2012].

DNA methylation constitutes a prominent epigenetic modification of the chromatin fiber which is locked in a transcriptionally inactive conformation leading to gene silencing [Köhler et al., 2012]. Generally, open chromatin increases the accessibility of the genome to the transcription machinery, while closed chromatin represses gene expression by limiting the accessibility [Reyes, 2006; Kouzarides, 2007]. The past decade revealed exciting findings on epigenetic mechanisms controlling developmental processes specific to flowering plants: the determination of the sporogenic fate during development, the differen-

tiation of gametes within multicellular gametophytes, and the distinction of the 2 male gametes involved in double fertilization [Twell, 2011]. Recent studies have demonstrated epigenetic changes during plant developmental processes and after microspore induction to the sporophytic pathway leading to embryogenesis [Solís et al., 2012; Testillano et al., 2013]. However, the knowledge of the DNA methylation regulation during microspore embryogenesis is very limited.

In this work, the dynamics of global DNA methylation levels and distribution patterns was analyzed during microspore reprogramming to embryogenesis in comparison with pollen development in *Hordeum vulgare*. Our results reveal a global DNA hypomethylation during the change of the developmental program and the first embryogenic divisions, in contrast with the hypermethylation of the generative and sperm cells of the male germline observed during pollen maturation, as well as in the embryo cells during embryo differentiation. These results suggest an epigenetic regulation after microspore embryogenesis induction and subsequent embryo development, supporting the idea that DNA methylation is critical for the regulation of gene expression in microspore embryogenesis.

Materials and Methods

Plant Material and Growth Conditions

Winter barley cultivars, *Hordeum vulgare* L. cv. Igri, were used as donor plants. Seeds were germinated in soil for 1 month at 4°C. Thereafter, they were grown at 12°C with a 12/12-hour light/dark cycle (10,000–16,000 lx) for 1 month in a plant growth chamber (Sanyo) (relative humidity ~70%), and then in a greenhouse under a controlled temperature of 18°C.

Microspore Isolation and Culture

Spikes containing microspores at the vacuolated stage were collected and surface sterilized by immersion in 5% bleach for 20 min, followed by 3–4 washes with sterile distilled water. The sterilized spikes were then pre-treated at 4°C for 23–24 days as stress treatment to induce embryogenic development. Isolation and culture of the microspores were performed as previously described [Rodríguez-Serrano et al., 2012] with a final density of 1.1×10^5 cells/ml in an appropriate volume of KBP medium [Kumlehn et al., 2006].

Processing for Microscopic Analysis

Samples from different culture times were collected and fixed overnight at 4°C with 4% paraformaldehyde in phosphate-buffered saline (PBS) pH 7.3, washed in PBS, dehydrated in an acetone series, embedded in Historesin Plus at 4°C and sectioned at 2 µm thickness using an ultramicrotome (Ultracut E, Reichert). Semi-thin sections were collected on slides, stained with toluidine blue and observed under a bright-field microscope.

Immunofluorescence

Immunolocalization of 5-methyl-deoxycytidine (5mdC) was performed as previously described [Solís et al., 2012; Testillano et al., 2013]. Historesin semithin sections were mounted on 3-aminopropyltriethoxysilane-coated slides, denatured with 2 N HCl for 45 min, washed in PBS and treated with 5% bovine serum albumin (BSA) in PBS for 10 min, incubated with anti-5mdC mouse antibody (Eurogentec) diluted 1:50 in 1% BSA and Alexa-Fluor-488 anti-mouse IgG antibody (Molecular Probes) diluted 1:25. Sections were counterstained with 1 mg/ml DAPI (4',6-diamidino-2-phenylindole) for 10 min and analyzed by confocal microscopy (TCS-SP5, Leica). As negative controls, either DNA denaturation or the first antibody was omitted. Also, as negative control, immunodepletion was carried out by preblocking the antibody with 5mdC at 4°C overnight prior to immunofluorescence as described [Testillano et al., 2013].

Quantification of Global DNA Methylation

Genomic DNA was extracted from microspores and mature pollen directly isolated from anthers, and from different microspore culture stages using a plant genomic DNA extraction kit (DNeasy Plant Mini, Qiagen) as described [Solís et al., 2014]. A MethylFlash Methylated DNA Quantification Kit (Colorimetric) (Epigentek, N.Y., USA) was employed according to the manufacturer's instruction using 200 ng of genomic DNA for each sample [Li and Liu, 2011; Testillano et al., 2013] for the quantification of DNA methylation. Three biological and 2 analytical replicates per sample were taken. *p* values were calculated using Student's *t* test.

Results

During the gametophytic development *in vivo*, the haploid microspore undergoes a long interphase with the formation of a large vacuole which pushes the nucleus to the periphery forming the so-called vacuolated microspore (fig. 1A). At this stage, the first asymmetric mitosis occurs originating the bicellular pollen (fig. 1B) with 2 very different cells: the small generative cell immersed in the cytoplasm of the large vegetative cell. The generative nucleus ('Gn' in fig. 1B) exhibits highly condensed chromatin, while the vegetative nucleus ('Vn' in fig. 1B) shows less condensed chromatin and a large nucleolus. In barley, the second pollen mitosis occurs before anthesis forming the tricellular pollen grain (fig. 1C) which contains the 2 small sperm cells (arrows in fig. 1C) inside the vegetative cell. With the progression of pollen maturation, the vacuole disappears and the cytoplasm is occupied by storage products and small vacuoles (fig. 1C).

To induce the microspore embryogenesis process in barley, a cold stress treatment was applied to vacuolated microspores which changed the gametophytic pathway to an embryogenic development [Rodríguez-Serrano et al., 2012]. After the stress treatment, responsive microspores

reprogrammed and divided symmetrically originating 2-cell structures (fig. 1D) with 2 nuclei of similar size and structural organization. After 4–6 days in culture, further divisions gave rise to multicellular embryos, still surrounded by the microspore wall, the exine (fig. 1E) which later broke permitting a faster proliferation and the formation of larger multicellular embryos (fig. 1F) at 9–10 days. As embryogenesis proceeded, more developed embryos were observed at 15 days of culture (fig. 1G), and completely formed mature embryos were found by 30 days (fig. 1H, inset).

For the analysis of the changes in genomic DNA methylation during pollen development and microspore embryogenesis, quantification of the percentage of methylated DNA was performed in selected stages of the 2 developmental pathways, the gametophytic and the embryogenic programs. Results revealed a very low proportion of methylated DNA in vacuolated microspores and a high increase with the progression of pollen development and maturation, reaching a much higher proportion in mature pollen (fig. 2A). On the contrary, after the inductive stress, samples containing reprogrammed microspores and 2–4 cell embryos showed low levels of DNA methylation (fig. 2B). At later embryogenesis stages, DNA methylation levels progressively increased in developing embryos of 15 days and mature embryos of 30 days (fig. 2B). The percentage of global DNA methylation was highest in mature pollen, 7-fold more than in vacuolated microspores (fig. 2A) and nearly 2-fold more than in mature embryos (fig. 2B).

Confocal microscopy analysis of the 5mdC immunofluorescence assays revealed the nuclear distribution of methylated DNA and showed differences in the intensity and distribution pattern of the immunofluorescence signals at defined developmental stages. Confocal analysis was performed using the same laser excitation and sample emission capture settings for image acquisition in all immunofluorescence preparations. This procedure permitted an accurate and reliable comparison between signals from cells at different developmental stages.

During the gametophytic development, the vacuolated microspore showed faint 5mdC fluorescence signals distributed as very small spots over the chromatin (fig. 3A–D), the large central nucleolus appeared negative for 5mdC immunolocalization and for DAPI staining (fig. 3B–D). After the first mitosis, the 2 nuclei of the bicellular pollen showed different 5mdC distribution patterns (fig. 3E–H), the generative nucleus exhibited more immunofluorescence signals than the vegetative one. The signals formed a thick reticulum covering the entire generative nucleus,

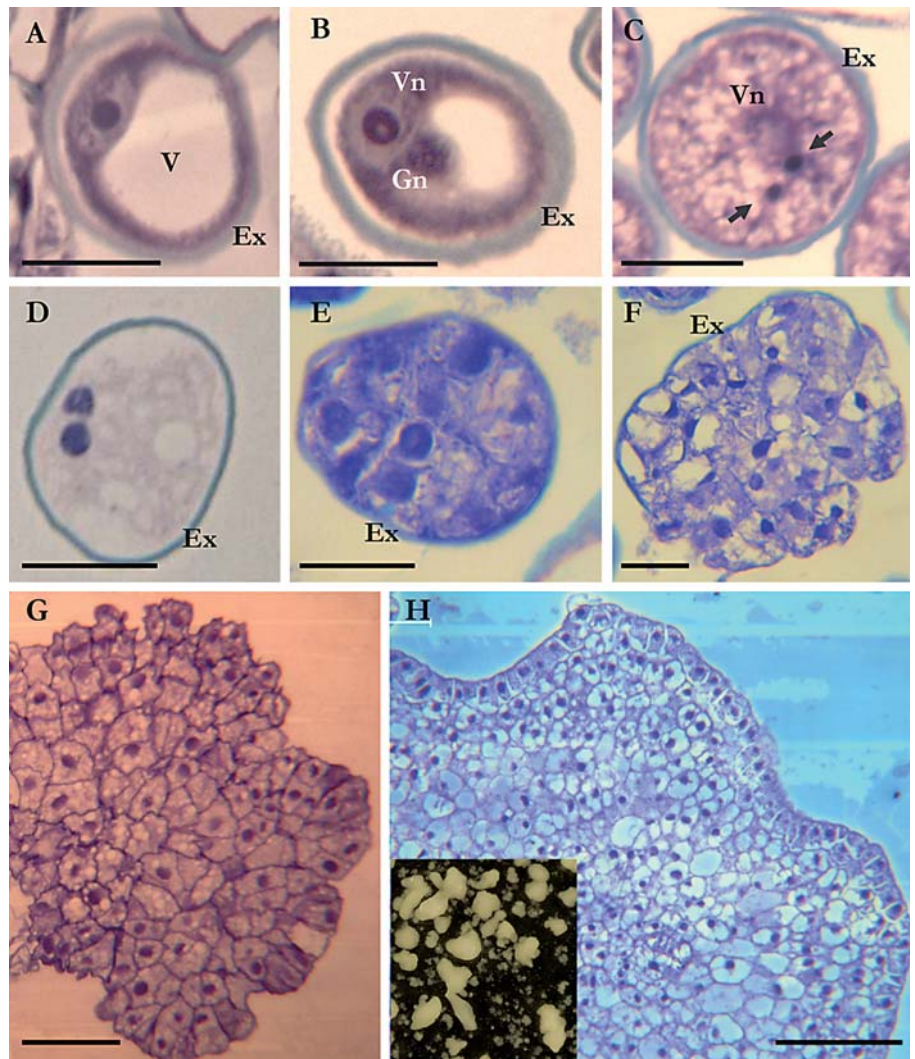


Fig. 1. Main stages of pollen development and microspore embryogenesis in barley. Semithin sections, toluidine blue staining. **A–C** Male gametophytic development in vivo. **D–H** Microspore embryogenesis in vitro. **A** Vacuolated microspore. **B** Young bicellular pollen with the vegetative and generative cells. **C** Mature tricellular pollen with the vegetative nucleus and the 2 small sperm cells (arrows). **D** Two-cell structure after microspore embryogenesis induction. **E** Multicellular embryo still surrounded by the pollen wall, the exine. **F** Multicellular embryo just after exine breakdown. **G** Developing embryo after 15 days in culture. **H** Mature embryo formed after 30 days in culture; region showing the peripheral cell layer of the protodermis. **Inset** Panoramic view of several embryos in culture. Ex = Exine; Gn = generative nucleus; V = vacuole; Vn = vegetative nucleus. Bars in **A–F** = 20 μm ; in **G, H** = 100 μm .

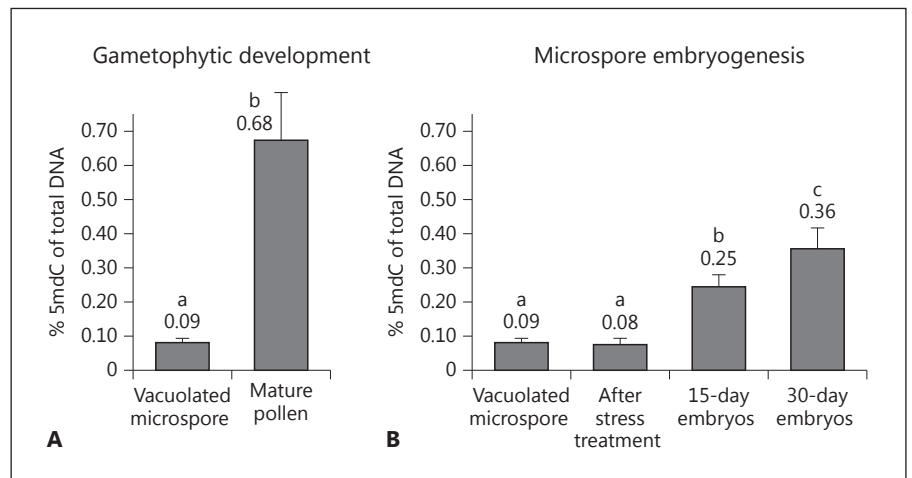
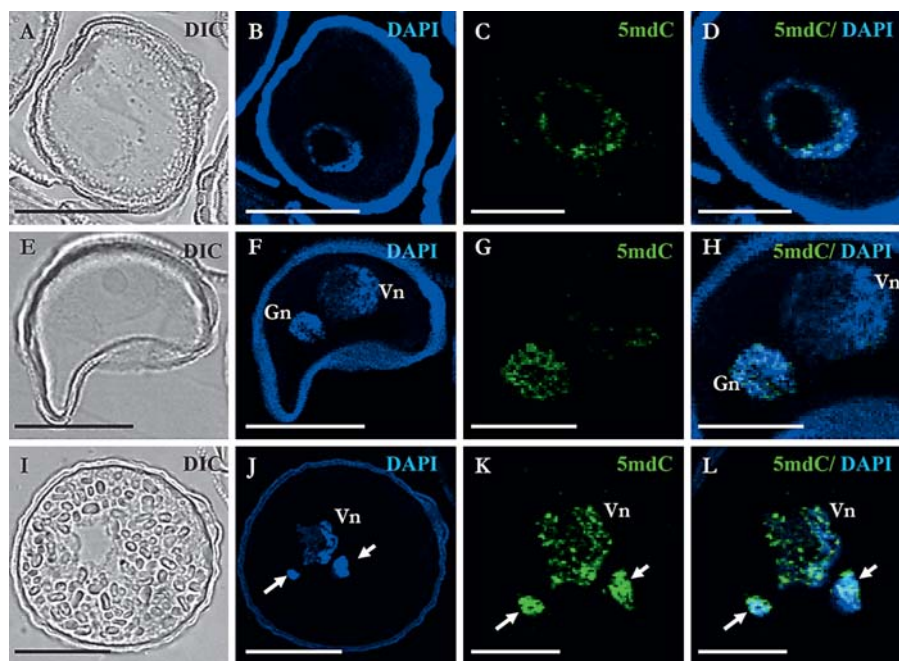


Fig. 2. Quantification of global DNA methylation during pollen gametophytic development (**A**) and microspore embryogenesis (**B**). Histograms represent the mean values of 5mC percentage of total DNA in different developmental stages. Each column represents an average of 3 independent biological and 2 technical replicates per sample. Bars with different letters indicate developmental stages in which the mean percentage values are significantly different ($p < 0.001$).

Fig. 3. 5mdC immunolocalization during pollen development. **A–D** Vacuolated microspore. **E–H** Bicellular pollen. **I–L** Mature tricellular pollen. **A, E, I** Differential interference contrast (DIC) images of the cell structure. **B, F, J** DAPI staining of nuclei (blue). **C, G, K** 5mdC immunofluorescence (green), higher magnification. **D, H, L** Merged images of DAPI (blue) and 5mdC immunofluorescence (green). The same structures are visualized under different microscopy modes in **A–D**, in **E–H** and in **I–L**. The exine shows unspecific autofluorescence under UV excitation in DAPI images. Arrows indicate sperm cells. Gn = Generative nucleus; Vn = vegetative nucleus. Bars in **A, B, E, F, I, J** = 10 μ m; in **C, D, G, H, K, L** = 20 μ m.



whereas the vegetative nucleus showed very few or no signals (fig. 3G, H). Finally, in mature tricellular pollen, 5mdC fluorescence was very intense on the 2 sperm nuclei, covering almost the whole nuclear areas; the vegetative nucleus, with a lobulated shape at this late developmental stage, showed 5mdC labeling as small spots on a thin reticulum throughout the nucleus (fig. 3I–L).

The labeling pattern of 5mdC was different after stress treatment for embryogenesis induction compared to developing pollen grains. In samples collected just after stress treatment, some microspores still appeared unincubated (fig. 4A–D), while other microspores had already divided producing 2–4 cell structures or proembryos (fig. 4E–H). Nuclei of the reprogrammed microspores and small proembryos showed low 5mdC fluorescence, with diffuse signals (fig. 4B–D) or forming a very thin reticulum (fig. 4F–H) over the DAPI-stained nuclei. The multicellular embryos surrounded by the exine (fig. 4I–L), and after the exine breakdown (fig. 5A–C), were formed at 5–10 days after stress treatment and exhibited large rounded nuclei. The cell nuclei of multicellular embryos showed different labeling intensities (fig. 5A–C), probably corresponding to nuclei at different interphase periods of the cell cycle presenting different chromatin condensation states; the nucleoli did not show fluorescence in any case, appearing as dark rounded regions in both DAPI and 5mdC micrographs (figs. 4I–K, 5A–C). A

few interphase nuclei did not show labeling (arrowheads in fig. 5B), whereas other nuclei appeared with medium fluorescence intensity. Mitotic nuclei were observed in multicellular embryos and exhibited strong fluorescence which covered the condensing chromosomes of prophase nuclei (arrow in fig. 5B) and chromosomes at different mitotic phases. With the progression of embryo development, larger embryos were formed and displayed a heterogeneous pattern of 5mdC labeling in the nuclei (fig. 5D–F), most embryo cell nuclei showed fluorescence of medium to high intensity, and some nuclei did not show any detectable signal (fig. 5D–F).

Immunofluorescence control experiments performed by eliminating either the denaturation treatment or the first antibody as well as immunodepletion experiments completely abolished the signal in all samples (figures not shown).

Discussion

The results reported in this study illustrate for the first time the epigenetic changes, regarding DNA methylation, during pollen development and after embryogenesis induction in barley microspore cultures. The chromatin remodeling occurring during development of male gametes provides generative and sperm nuclei with a unique

Fig. 4. 5mdC immunolocalization during early stages of microspore embryogenesis. **A–H** Vacuolated microspores and 2-cell structures after embryogenesis induction. **I–L** Multicellular embryo still surrounded by the exine. **A, E, I** DAPI staining of nuclei (blue). **B, F, J** 5mdC immunofluorescence (green). **C, G, K** Merged images obtained by differential interference contrast (DIC; to show the cell structure), DAPI (blue) and 5mdC immunofluorescence (green). **D, H, L** Higher magnification of DAPI and 5mdC merged images. The same structures are visualized under different microscopy modes in **A–D**, in **E–H** and in **I–L**. The exine shows unspecific autofluorescence under UV excitation in DAPI images. Bars in **A–C, E–G, I–K** = 20 μ m; in **D, H, L** = 10 μ m.

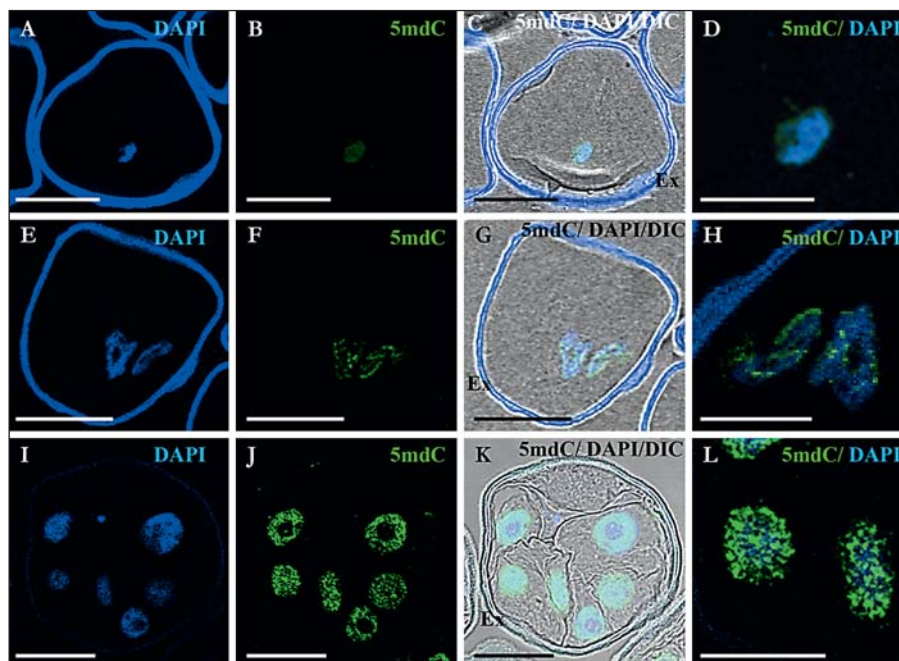
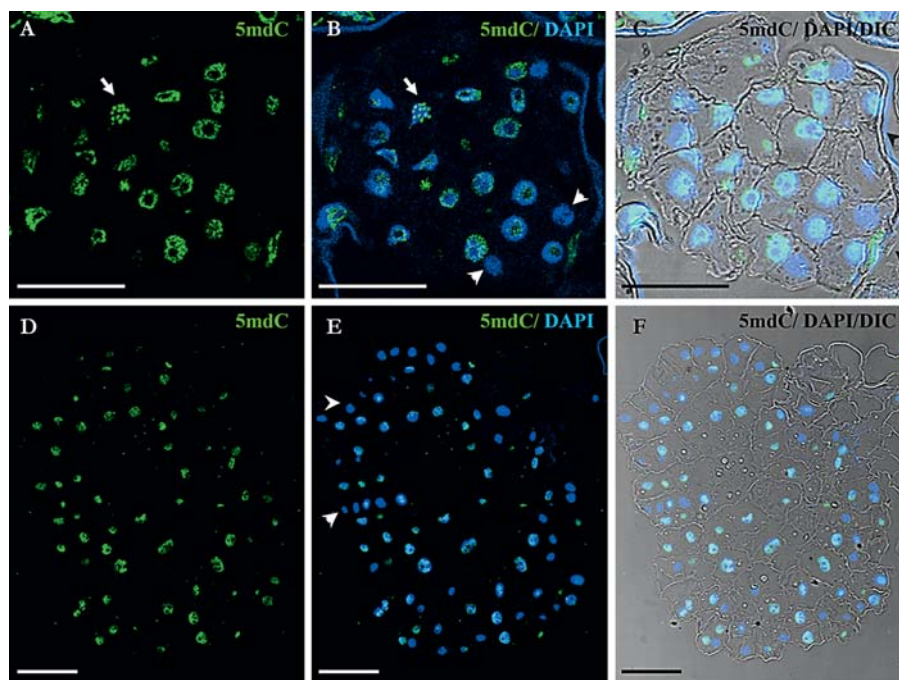


Fig. 5. 5mdC immunolocalization during advanced stages of microspore embryogenesis. **A–C** Multicellular embryo just after exine breakdown. **D–F** Developing embryo after 15 days in culture. **A, D** 5mdC immunofluorescence (green). **B, E** Merged images of DAPI (blue) and 5mdC immunofluorescence (green). **C, F** Merged images obtained by differential interference contrast (DIC; to show the cell structure), DAPI (blue) and 5mdC (green) fluorescence signals. Arrows in **A** and **B** indicate mitotic chromosomes. Arrowheads in **B** and **E** indicate nuclei which did not show 5mdC labeling. Arrowheads in **C** point to exine remnants still attached to the periphery of the multicellular embryo. The same structures are visualized under different microscopy modes in **A–C** and in **D–F**. Bars in **A–C** = 25 μ m; in **D–F** = 75 μ m.



chromatin organization in a highly condensed state. The high increase of global methylation observed in the present work during pollen maturation in barley was associated with the heterochromatinization that accompanied cellular differentiation in the most advanced stages of pollen development. In plants, the male germline is rep-

resented by the generative cell and the 2 sperm cells. Some reports have indicated the specific accumulation of epigenetic histone variants in the nuclei of the male germline [Ingouff et al., 2007], as well as a variable epiallele hypermethylation [Borges et al., 2012]. The results presented here in barley reveal a differential genome-wide hyper-

methylation in the generative and sperm nuclei, while the vegetative nucleus remained hypomethylated after the first pollen mitosis.

The distribution of several histone modifications in the generative, sperm and vegetative nucleus of barley pollen has been recently reported [Pandey et al., 2013]. In this report, marks associated with transcriptional activity, like active RNA polymerase II, acetylated histone H3 in lysine 9, H3K9Ac, and trimethylated histone H3 in lysine 27, H3K27me3 [Liu et al., 2010], were scarce or even absent in generative and sperm nuclei, whereas late microspore and vegetative nuclei exhibited higher labeling [Pandey et al., 2013]. Our results on DNA methylation in pollen nuclei are in agreement with these findings and provide new evidence that gene silencing-related epigenetic modifications are enriched in the generative and sperm nuclei, while activity-related marks are mainly localized in late microspore and vegetative nuclei. The repressive epigenetic mark dimethylated histone H3 in lysine 9, H3K9me2, was found not only in the generative and sperm nuclei but also in the vegetative and microspore nuclei of barley pollen, and the activating mark dimethylated histone H3 in lysine 4, H3K4me2, was also localized in microspore and all pollen grain nuclei [Pandey et al., 2013]. The authors suggested that these modifications would be related to local changes in transcriptional activity and tissue-specific regulated genes and would be therefore present in nuclei of all stages of pollen development.

Low DNA methylation levels have been reported in microspores and vegetative nuclei of *Brassica napus*, as well as a punctuate nuclear 5mdC distribution pattern [Solís et al., 2012] corresponding to the scarce heterochromatin masses typical of this species [Seguí-Simarro et al., 2011]. In barley, the results revealed low DNA methylation and punctuate-thin reticulum distribution patterns of 5mdC in microspores and vegetative nuclei, in relation to the low condensed chromatin pattern of this monocot plant and with the high transcriptional activity reported for the vacuolated microspore [Testillano et al., 2000, 2005], the most responsive developmental stage for embryogenesis induction in many species [González-Melendi et al., 1995; Maluszynski et al., 2003; Bárány et al., 2005; Prem et al., 2012].

Immunofluorescence analyses showed no 5mdC signal over the nucleolus of vacuolated microspores. In the nucleolus, rRNA genes are transcribed, and the nucleolar architecture clearly reflects the level of ribosome biosynthesis activity. In many organisms including plants, rRNA genes occur in high copy numbers which can be silent or

transcribed depending on the activity state of the cell. Epigenetic changes involving DNA methylation and histone modifications have been reported to act in the dosage regulation of the number of active rRNA genes at any one time [Lawrence et al., 2004; Galetzka et al., 2006; Preuss et al., 2008; Bártoová et al., 2010]. In contrast with animal cells, plant cells do not usually exhibit a shell of perinucleolar heterochromatin where the silent portion of the repeated ribosomal genes and some telomeric and centromeric DNA regions are found [Bártoová et al., 2010; Politz et al., 2013]. Only very few condensed chromatin knobs containing inactive rDNA can be observed at the nucleolar periphery [Testillano et al., 2005] and could correspond to some of the 5mdC spots found at the periphery of the nucleolus in the vacuolated microspore (fig. 3C). In plants, low-active nucleoli display small condensed chromatin masses, containing silent rDNA, at the nucleolar interior in the so-called heterogeneous fibrillar centers, whereas in very active nucleoli, rDNA is distributed in a decondensed state throughout the nucleolar dense fibrillar component [Risueño and Testillano, 1994; Testillano et al., 2005]. The large nucleolus of the vacuolated microspore has been characterized with a typical organization of high transcriptional activity, corresponding to the G2 phase of the cell cycle [Risueño and Testillano, 1994; González-Melendi et al., 1995; Testillano et al., 2005], the ribosomal chromatin being distributed in a decondensed state through the fibrillar component of the nucleolus, as revealed by rDNA in situ hybridization [Risueño and Testillano, 1994; Testillano et al., 2005]. In barley microspores, the nucleolus did not show 5mdC labeling, indicating a decondensed state of ribosomal chromatin which correlates with an active rDNA transcription at this developmental stage.

In contrast with the microspore and vegetative nuclei, 5mdC signals in generative and sperm nuclei were intense and distributed in wider nuclear regions, covering the large heterochromatin masses that occupy the major part of the nuclear volume. In *B. napus*, hypermethylation of mature pollen was correlated with up-regulation of *BnMET1* methyl transferase, suggesting the involvement of MET1 in the methylation of generative nuclei [Solís et al., 2012], but no data is available in barley on the MET1 participation in epigenetic mechanisms during pollen development. The results obtained indicate an important change in the global DNA methylation, specifically in the male germline of barley, a process probably contributing to the epigenetic inheritance after fertilization that has been reported in many plant species [Calarco et al., 2012].

Cell reprogramming by stress involves morphological and physiological changes as well as modifications in the genome organization and activity, as reported in dicot plants [Arnholdt-Schmitt, 2004; Miguel and Marum, 2011; Solís et al., 2012]. The present study shows in a monocot species that, in contrast with the DNA methylation increase in gametophytic development, microspore reprogramming to embryogenesis is associated with very low levels of global DNA methylation. Significant variations in global DNA methylation have been related to global changes of gene expression occurring during plant vegetative developmental processes [Meijón et al., 2010]. The present data reveal epigenetic modifications which accompany the reprogramming of the microspore towards a new developmental program and the first embryogenic divisions. This epigenetic change can be related to the global change of gene expression reported in barley microspore embryogenesis by transcriptomic analysis [Maraschin et al., 2006]. Thus, our results indicate, for the first time in a monocot species, the existence of epigenetic changes after pollen embryogenesis induction that could be associated with the acquisition of embryogenic competence by the microspore and the ability to erase its gametophytic program and switch to a new cell fate.

At later stages of microspore embryogenesis, the results of the present study show a mild increase in global DNA methylation levels in multicellular embryos whose cells showed 5mdC signals of different intensity and distribution covering the nuclear volume. It has been recently reported that nuclei of cycling cells of root meristems exhibited different signal intensities and distribution patterns of 5mdC immunofluorescence related to different interphase periods of the cell cycle presenting different chromatin condensation states [Testillano et al., 2013]. Most cells of the early microspore-derived multicellular embryos were in active proliferation, as revealed in several monocot and dicot species [Testillano et al., 2002, 2005; Bárány et al., 2005]. In the present study, nuclei of young barley multicellular embryos presented distribution patterns of 5mdC which varied in intensity and localization, similar to the patterns related to the different chromatin condensation states observed in plant cycling cells.

The quantification of DNA methylation performed during advanced stages of microspore-derived embryo development revealed a gradual DNA methylation increase. Recent reports have shown an increase in global DNA methylation during the progression of *in vitro* somatic embryogenesis of the pineapple *Acca sellowiana*

[Fraga et al., 2012], as well as during microspore embryogenesis of rapeseed [Solís et al., 2012]. Since the progression of embryogenesis is accompanied by cell differentiation events, the results presented would indicate that the increase of global DNA methylation levels in microspore-derived embryos is related to the cellular differentiation, as found in other plant systems [Costa and Shaw, 2007; Solís et al., 2012]. Differences in the distribution pattern of 5mdC between proliferating and differentiating plant cells have been established in various plant systems [Solís et al., 2012; Testillano et al., 2013], cells in differentiation showing much higher 5mdC labeling. The different 5mdC localization patterns found in cells of the advanced developing barley embryos could reflect different chromatin states of dividing cells and differentiating embryo cells.

During the zygotic embryogenesis, hypomethylation in the endosperm is accompanied by an extensive hypermethylation in the embryo [Köhler et al., 2012]. This process has been suggested to ensure silencing of transposons and repetitive elements in the embryo, and it occurs in monocots as well as in dicots, implicating an evolutionarily conserved mechanism of DNA hypermethylation in the embryo [Köhler et al., 2012]. The results of the present work also revealed a hypermethylation process during microspore-derived embryo development in barley, providing new evidence of analogous mechanisms acting in microspore embryogenesis and zygotic embryogenesis and supporting that DNA methylation is critical for the regulation of gene expression during plant embryogenesis.

Taken together, the results presented here reveal epigenetic changes that accompany the 2 pollen developmental programs analyzed: pollen maturation and microspore embryogenesis in barley, suggesting the possible involvement of DNA methylation dynamics in regulating microspore embryogenesis induction and progression in a monocot species.

Acknowledgements

This work was supported by the Spanish Ministry of Economy and Competitiveness (MINECO) project BFU2011-23752 and Spanish National Research Council (CSIC) project PIE 201020E038. A.-A.E.-T. is recipient of a JAE predoctoral fellowship of CSIC (JAEPred2010-052).

References

- Arnholdt-Schmitt B: Stress-induced cell reprogramming. A role for global genome regulation? *Plant Physiol* 136:2579–2586 (2004).
- Bárány I, González-Melendi P, Mityko J, Fadón B, Risueño MC, Testillano PS: Microspore-derived embryogenesis in *Capsicum annuum*: subcellular rearrangements through development. *Biol Cell* 97:709–722 (2005).
- Bártová E, Horáková AH, Uhlířová R, Raska I, Galiová G, et al: Structure and epigenetics of nucleoli in comparison with non-nucleolar compartments. *J Histochem Cytochem* 58:391–403 (2010).
- Borges F, Calarco JP, Martienssen RA: Reprogramming the epigenome in *Arabidopsis* pollen. *Cold Spring Harb Symp Quant Biol* 77:1–5 (2012).
- Calarco JP, Borges F, Donoghue MT, Van Ex F, Jullien PE, et al: Reprogramming of DNA methylation in pollen guides epigenetic inheritance via small RNA. *Cell* 151:194–205 (2012).
- Coronado MJ, Hensel G, Broeders S, Otto I, Kumlehn J: Immature pollen-derived doubled haploid formation in barley cv. Golden promise as a tool for transgene recombination. *Acta Physiol Plant* 27:591–599 (2005).
- Costa S, Shaw P: ‘Open minded’ cells: how cells can change fate. *Trends Cell Biol* 17:101–106 (2007).
- El-Tantawy AA, Solís MT, Da Costa ML, Coimbra S, Risueño MC, Testillano PS: Arabinogalactan protein profiles and distribution patterns during microspore embryogenesis and pollen development in *Brassica napus*. *Plant Reprod* 26:231–243 (2013).
- Fraga HP, Vieira LN, Caprestano CA, Steinmacher DA, Micke GA, et al: 5-Azacytidine combined with 2,4-D improves somatic embryogenesis of *Acca sellowiana* (o. Berg) Burret by means of changes in global DNA methylation levels. *Plant Cell Rep* 31:2165–2176 (2012).
- Galetzka D, Tralau T, Stein R, Haaf T: Expression of *DNMT3A* transcripts and nucleolar localization of DNMT3A protein in human testicular and fibroblast cells suggest a role for de novo DNA methylation in nucleolar inactivation. *J Cell Biochem* 98:885–894 (2006).
- González-Melendi P, Testillano PS, Ahmadian P, Fadón B, Vicente O, Risueño MC: In situ characterization of the late vacuolated microspore as a convenient stage to induce embryogenesis in *Capsicum*. *Protoplasma* 187:60–71 (1995).
- González-Melendi P, Ramírez C, Testillano PS, Kumlehn J, Risueño MC: Three dimensional confocal and electron microscopy imaging define the dynamics and mechanisms of diploidisation at early stages of barley microspore-derived embryogenesis. *Planta* 222:47–57 (2005).
- Grafi G, Florentin A, Ransbotyn V, Morgenstern Y: The stem cell state in plant development and in response to stress. *Front Plant Sci* 2:53 (2011).
- Ingouff M, Hamamura Y, Gourgues M, Higashiyama T, Berger F: Distinct dynamics of histone 3 variants between the two fertilization products in plants. *Curr Biol* 17:1032–1037 (2007).
- Kasha KJ, Simion E, Oro R, Yao QA, Hu TC, Carlson AR: An improved in vitro technique for isolated microspore culture of barley. *Euphytica* 120:379–385 (2001).
- Köhler C, Wolff P, Spillane C: Epigenetic mechanisms underlying genomic imprinting in plants. *Annu Rev Plant Biol* 63:331–352 (2012).
- Kouzarides T: Chromatin modifications and their function. *Cell* 128:693–705 (2007).
- Kumlehn J, Serazetdinova L, Hensel G, Becker D, Loerz H: Genetic transformation of barley (*Hordeum vulgare* L.) via infection of androgenetic pollen cultures with *Agrobacterium tumefaciens*. *Plant Biotechnol J* 4:251–261 (2006).
- Lawrence RJ, Earley K, Pontes O, Silva M, Chen ZJ, et al: A concerted DNA methylation/histone methylation switch regulates rRNA gene dosage control and nucleolar dominance. *Mol Cell* 13:599–609 (2004).
- Li W, Liu M: Distribution of 5-hydroxymethylcytosine in different human tissues. *J Nucleic Acids* 2011:870726 (2011).
- Liu C, Lu F, Cui X, Cao X: Histone methylation in higher plants. *Annu Rev Plant Biol* 61:395–420 (2010).
- Maluszynski M, Kasha KJ, Forster BP, Szarejko I: Doubled Haploid Production in Crop Plants. A Manual (Kluwer Academic Publishers, Dordrecht 2003).
- Maraschin SdF, Caspers M, Potokina E, Wuelfert F, Graner A, et al: cDNA array analysis of stress-induced gene expression in barley androgenesis. *Physiol Plant* 127:535–550 (2006).
- Meijón M, Feito I, Valledor L, Rodríguez R, Cañal MJ: Dynamics of DNA methylation and histone H4 acetylation during floral bud differentiation in azalea. *BMC Plant Biol* 10:10 (2010).
- Miguel C, Marum L: An epigenetic view of plant cells cultured in vitro: somaclonal variation and beyond. *J Exp Bot* 62:3713–3725 (2011).
- Pandey P, Houben A, Kumlehn J, Melzer M, Rutten T: Chromatin alterations during pollen development in *Hordeum vulgare*. *Cytogenet Genome Res* 141:50–57 (2013).
- Politz JCR, Scalzo D, Groudine M: Something silent this way forms: the functional organization of the repressive nuclear compartment. *Annu Rev Cell Dev Biol* 29:241–270 (2013).
- Prem D, Solís MT, Bárány I, Rodríguez-Sanz H, Risueño MC, Testillano PS: A new microspore embryogenesis system under low temperature which mimics zygotic embryogenesis initials, expresses auxin and efficiently regenerates doubled-haploid plants in *Brassica napus*. *BMC Plant Biol* 12:127 (2012).
- Preuss SB, Costa-Nunes P, Tucker S, Pontes O, Lawrence RJ, et al: Multimegabase silencing in nucleolar dominance involves siRNA-directed DNA methylation and specific methylcytosine-binding proteins. *Mol Cell* 32:673–684 (2008).
- Reyes JC: Chromatin modifiers that control plant development. *Curr Opin Plant Biol* 9:21–27 (2006).
- Risueño MC, Testillano PS: Cytochemistry and immunocytochemistry of nucleolar chromatin in plants. *Micron* 25:331–360 (1994).
- Rodríguez-Serrano M, Bárány I, Prem D, Coronado MJ, Risueño MC, Testillano PS: NO, ROS, and cell death associated with caspase-like activity increase in stress-induced microspore embryogenesis of barley. *J Exp Bot* 63:2007–2024 (2012).
- Seguí-Simarro JM, Corral-Martínez P, Corredor E, Raska I, Testillano PS, Risueño MC: A change of developmental program induces the remodeling of the interchromatin domain during microspore embryogenesis in *Brassica napus* L. *J Plant Physiol* 168:746–757 (2011).
- Solís MT, Rodríguez-Serrano M, Meijón M, Cañal MJ, Cifuentes A, et al: DNA methylation dynamics and *MET1a*-like gene expression changes during stress-induced pollen reprogramming to embryogenesis. *J Exp Bot* 63:6431–6444 (2012).
- Solís MT, Chakrabarti N, Corredor E, Cortés-Eslava J, Rodríguez-Serrano M, et al: Epigenetic changes accompany developmental programmed cell death in tapetum cells. *Plant Cell Physiol* 55:16–29 (2014).
- Testillano PS, Coronado MJ, Seguí JM, Domenech J, González-Melendi P, et al: Defined nuclear changes accompany the reprogramming of the microspore to embryogenesis. *J Struct Biol* 129:223–232 (2000).
- Testillano PS, Ramírez C, Domenech J, Coronado MJ, Vergne P, et al: Young microspore-derived maize embryos show two domains with defined features also present in zygotic embryogenesis. *Int J Dev Biol* 46:1035–1047 (2002).
- Testillano PS, González-Melendi P, Coronado MJ, Seguí-Simarro JM, Moreno-Risueño MA, Risueño MC: Differentiating plant cells switched to proliferation remodel the functional organization of nuclear domains. *Cytogenet Genome Res* 109:166–174 (2005).
- Testillano PS, Solís MT, Risueño MC: The 5-methyl-deoxy-cytidine (5mdC) localization to reveal in situ the dynamics of DNA methylation chromatin pattern in a variety of plant organ and tissue cells during development. *Physiol Plant* 149:104–113 (2013).
- Twell D: Male gametogenesis and germline specification in flowering plants. *Sex Plant Reprod* 24:149–160 (2011).
- Verdeil JL, Alemanno L, Niemenak N, Tranbarger TJ: Pluripotent versus totipotent plant stem cells: dependence versus autonomy? *Trends Plant Sci* 2:245–252 (2007).