



Correction to: Benthic ostracods (crustacean) as a nearshore pollution bio-monitor: Examples from the Red Sea Coast of Egypt

Ramadan El-Kahawy¹ · Moataz El-Shafeiy¹ · Sobhi Helal² · Nabil Aboul-Ela¹ · M. Abd El-Wahab³

Published online: 19 March 2021

© Springer-Verlag GmbH Germany, part of Springer Nature 2021

Correction to: *Environmental Science and Pollution Research* (2021)

<https://doi.org/10.1007/s11356-020-12266-x>

1. In section **Benthic Ostracods**:

- 1.1. In the 2nd paragraph, (Figs. 7 and 8, and Appendix 2) should be corrected to (Appendix 2-4).
- 1.2. All repeated (Fig. 9) and (Fig. 10) should be corrected to (Fig. 7) and (Fig. 8), respectively.

2. In section **Cluster analysis**:

- 2.1. All repeated (Fig. 11) should be corrected to (Fig. 9).

3. In section **Redundancy analysis**:

- 3.1. All repeated (Plate 1) should be corrected to (Fig. 10).

4. In section **Distribution, diversity indices, and abundances of ostracoda**:

- 4.1. In the 3rd paragraph, (Fig. 9) should be corrected to (Fig. 7).

5. In section **Ostracod abundance-environmental factors relation**:

- 5.1. In the 2nd paragraph, (Plate 1) should be corrected to (Fig. 10).

6. In section **Heavy metal clusters**:

- 6.1. In the 4th paragraph, all repeated (Plate 2) should be corrected to (Fig. 11).

Errors in figures and caption

Fig. 10 Redundancy analysis (RDA) tri-plot for relative abundance of ostracod species in surface sediment of each station and the associated environmental variables

Fig. 11 Cross-plots compare the relationship between selected ostracod abundances and Cr content (ppm) for samples from the two sites. r = correlation coefficient

The online version of the original article can be found at <https://doi.org/10.1007/s11356-020-12266-x>

✉ Moataz El-Shafeiy
motazadel80@cu.edu.eg

¹ Geology department, Faculty of Science, Cairo University, Giza, Egypt

² Geology Department, Faculty of Science, Fayoum University, Faiyum, Egypt

³ National Institute of Oceanography and Fisheries, Hurghada branch, Hurghada, Egypt

Publisher's note Springer Nature remains neutral with regard to jurisdictional claims in published maps and institutional affiliations.

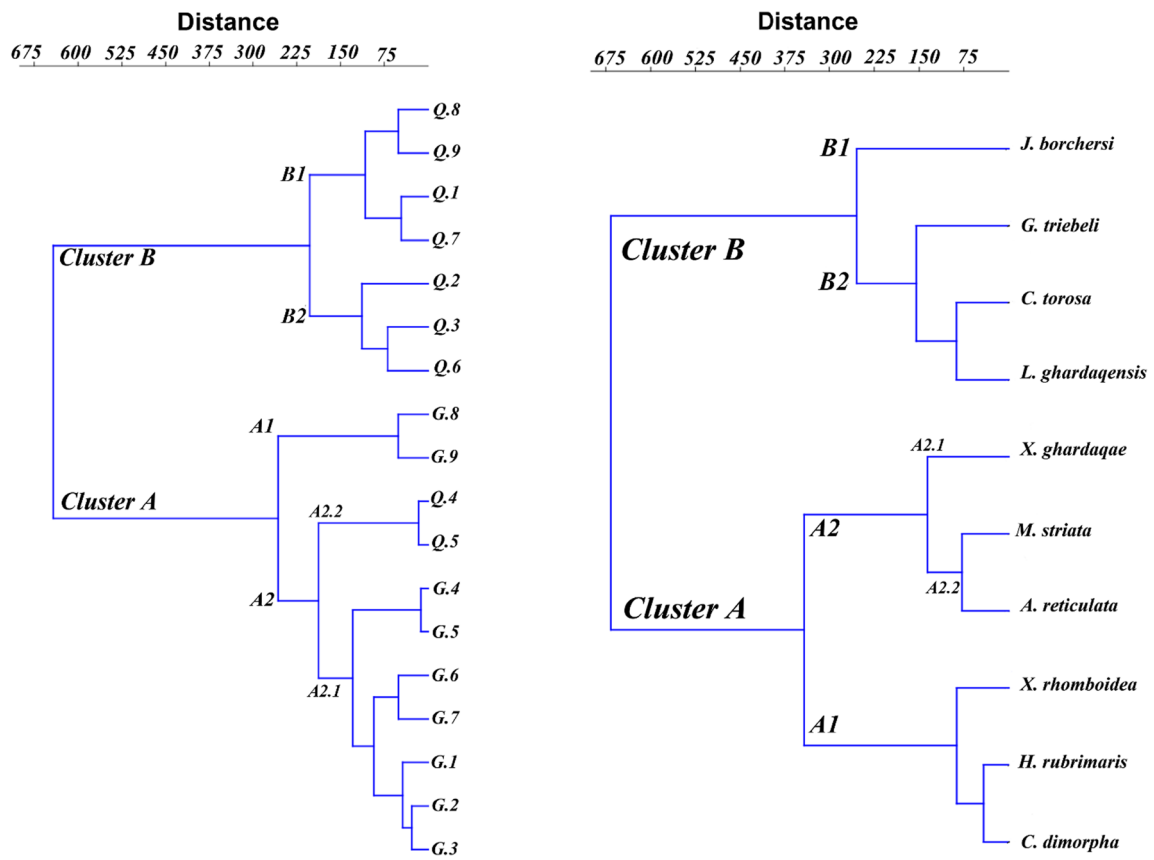


Fig. 9 Q-and R-modes cluster analyses based on the recorded ostracod taxa in 18 variables (samples), using Ward's method for agglomeration