

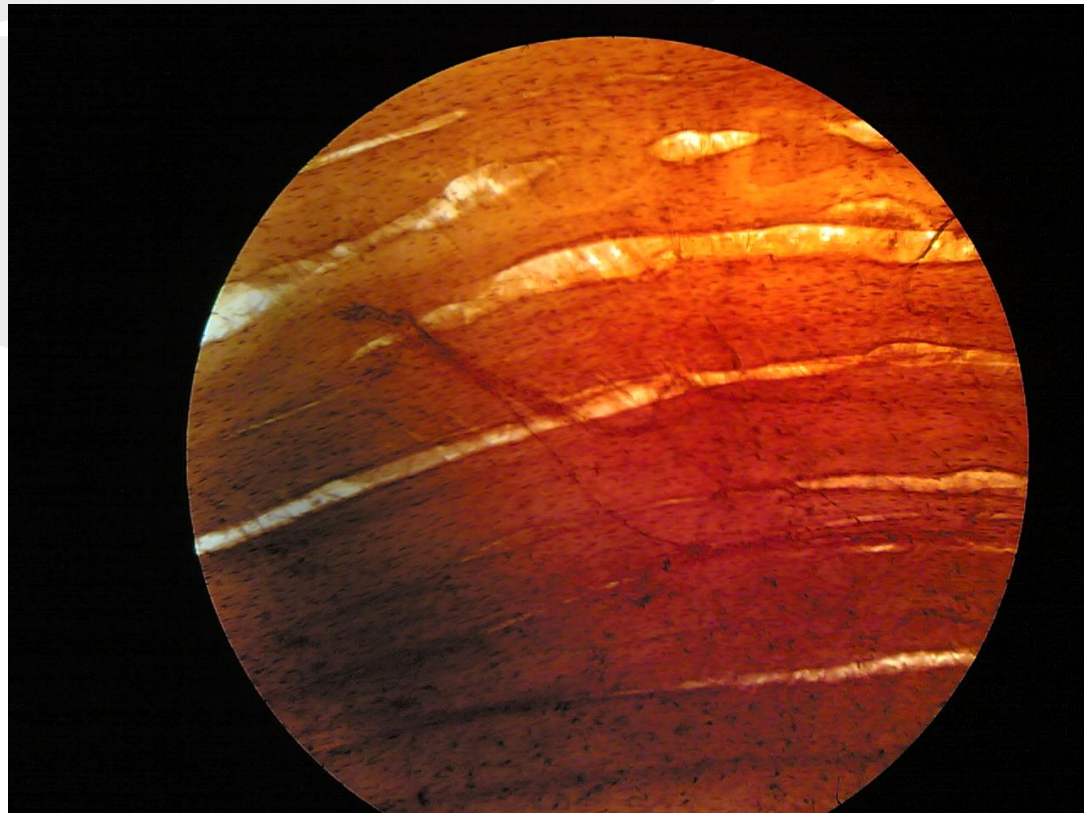
High power slides

First year

Prof Menna Abdel-Dayem

Brown: Motor end plate (Ag)

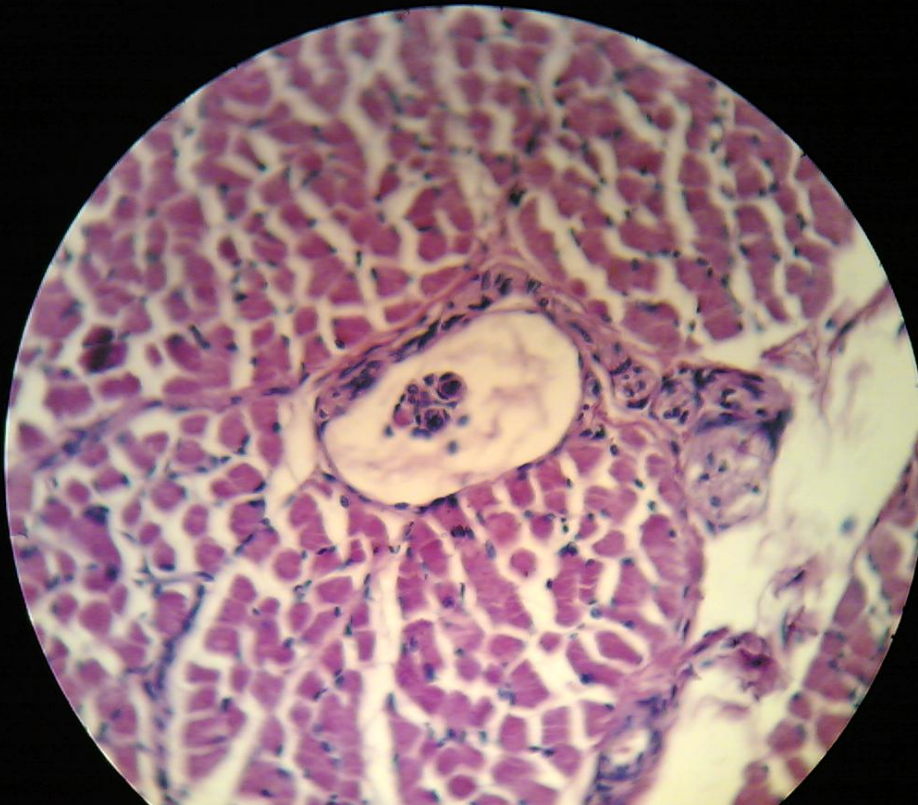
parallel muscle fibers + branching nerve fiber



Prof Menna Abdel-Dayem

Muscle spindle

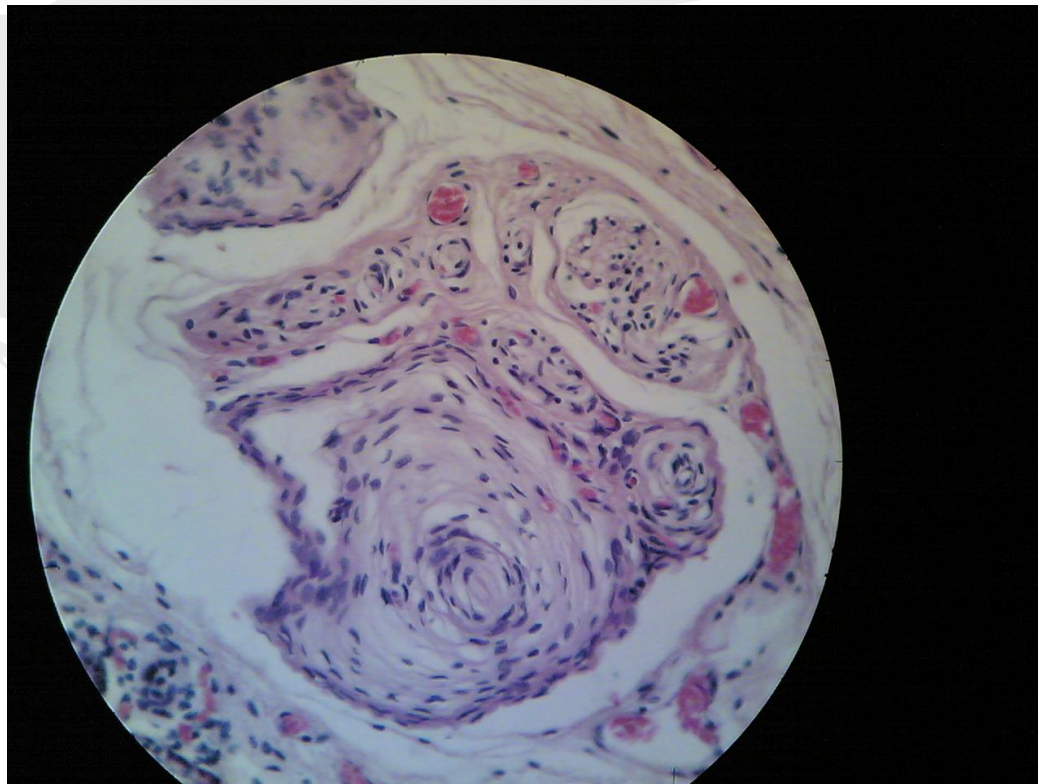
TS skeletal muscle+ central capsulated structure with smaller muscle fibers



Prof Menna Abdel-Dayem

Pacinian corpuscle

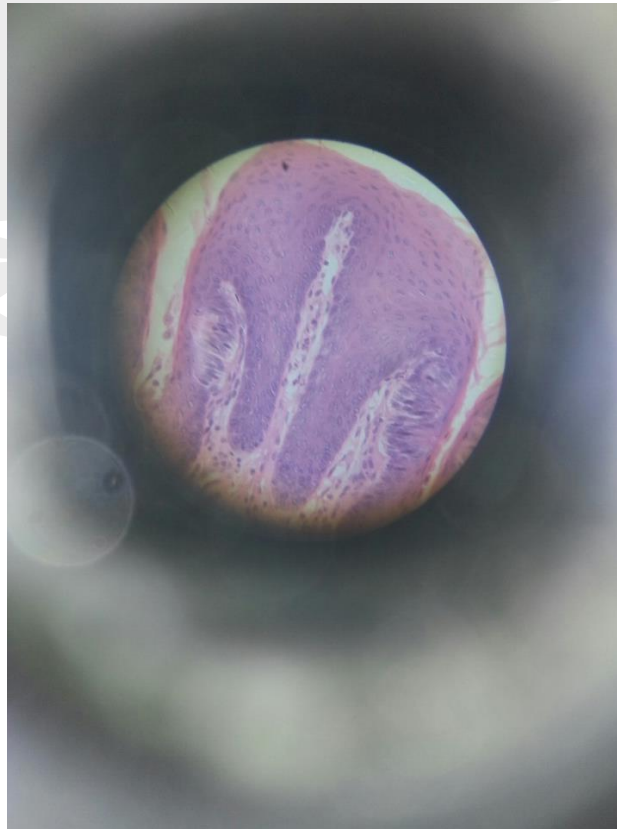
Rounded structure formed of many concentric layers in loose areolar connective tissue



Prof Menna Abdel-Dayem

Taste buds

Parallel ridges of stratified squamous epithelium containing pale rounded structures



Prof Menna Abdel-Dayem

Simple squamous epithelium

Lining of the wall of a renal corpuscle
flat nucleus one row

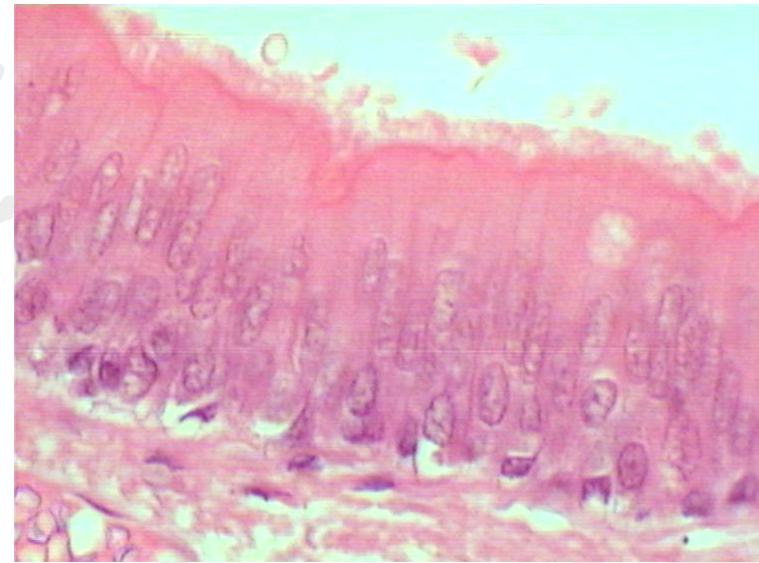
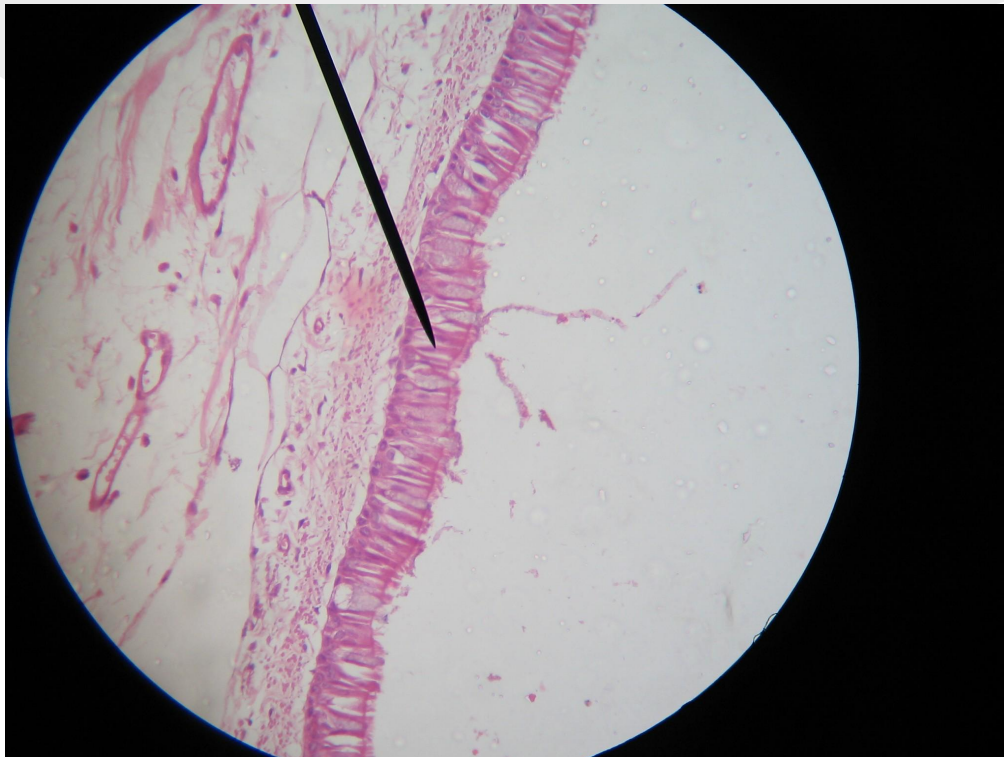


www.shutterstock.com · 131377679

Prof Menna Abdel-Dayem

Pseudostratified columnar ciliated epithelium with goblet cells

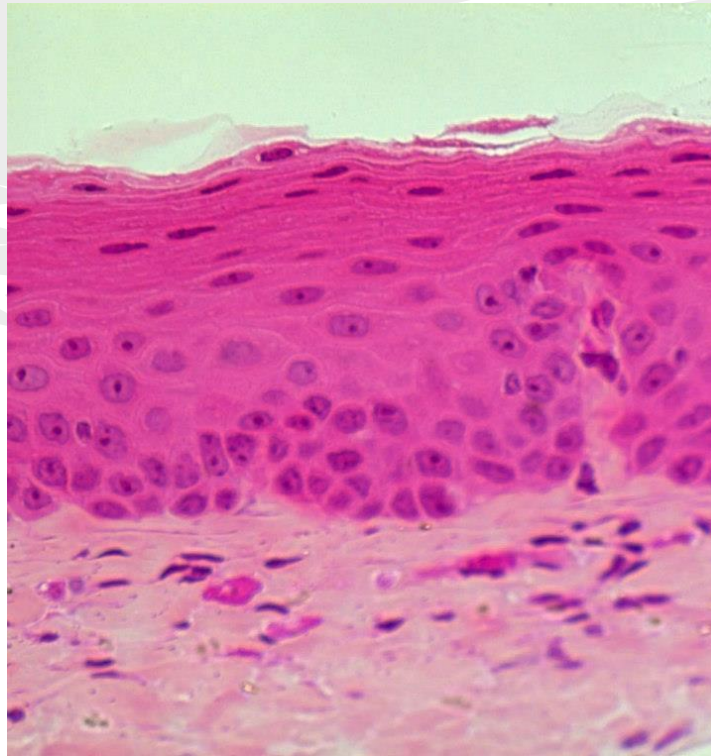
2 to 3 rows of nuclei, the apical part of the epithelium does not contain nuclei, you may see the cilia



Prof Menna Abdel-Dayem

Non keratinized stratified squamous epithelium

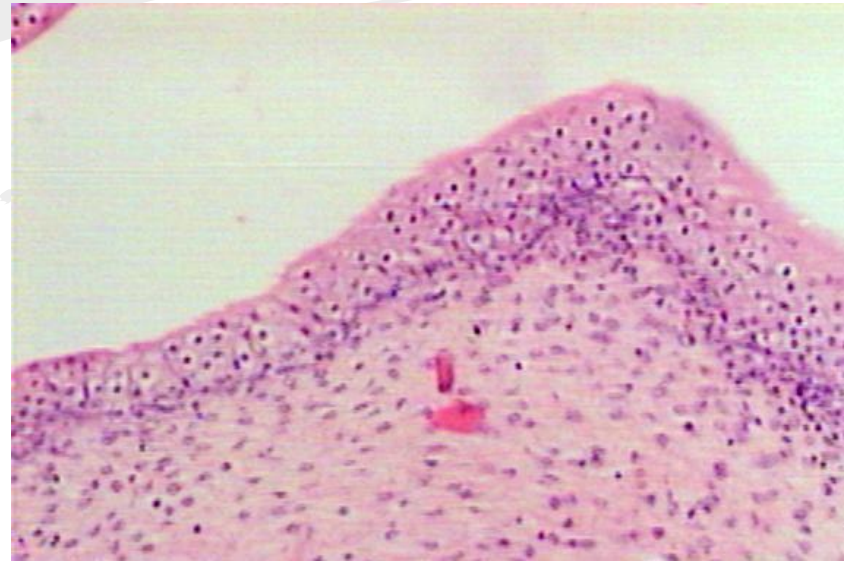
Multiple rows of nuclei, the apical nuclei are flattened



Prof Menna Abdel-Dayem

Transitional epithelium

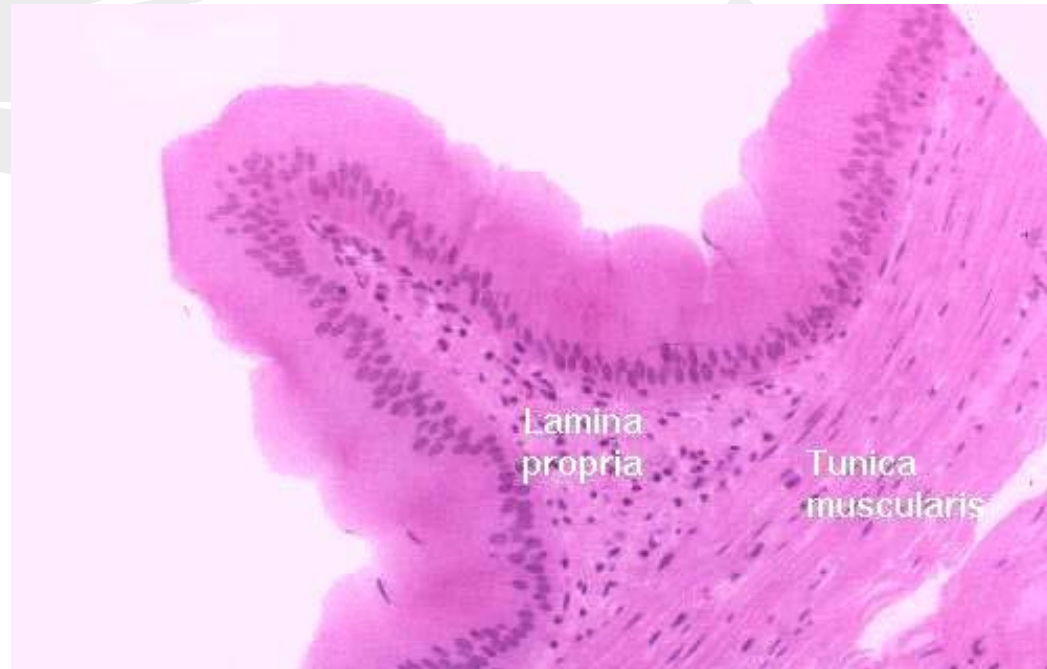
Multiple rows of nuclei, all are rounded, folded epithelium



Prof Menna Abdel-Dayem

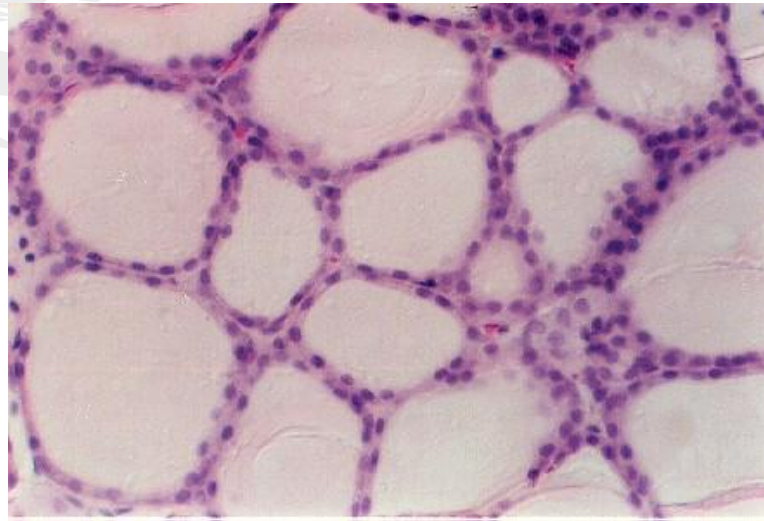
Simple columnar epithelium

Tall cells with one row of nuclei



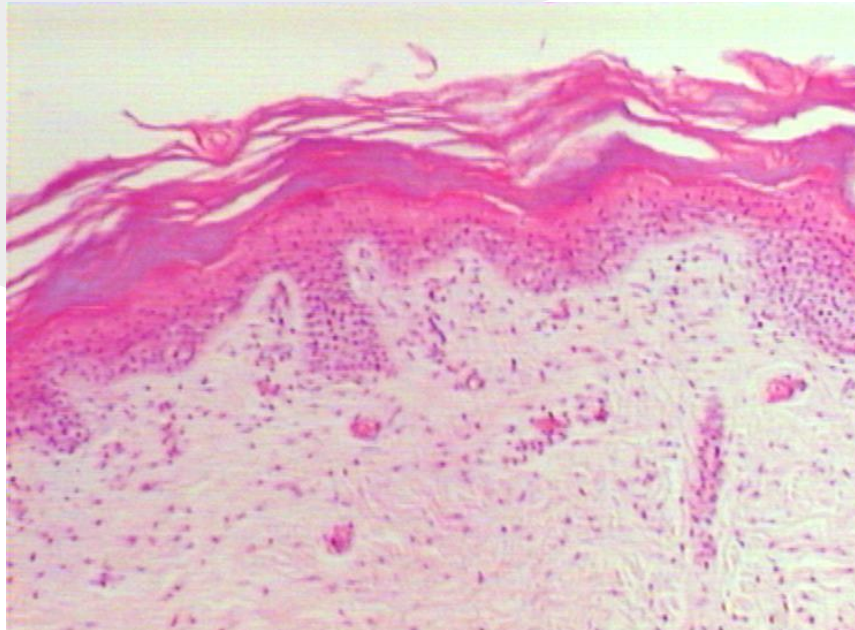
Simple cubical epithelium

Rounded follicles filled with acidophilic material lined with one row of cells with rounded nuclei



Keratinized stratified squamous epithelium

Multiple rows of nuclei, the apical nuclei are flattened with thick acidophilic layer of keratin



Prof Menna Abdel-Dayem

Thank you

Prof Menna Abdel-Dayem