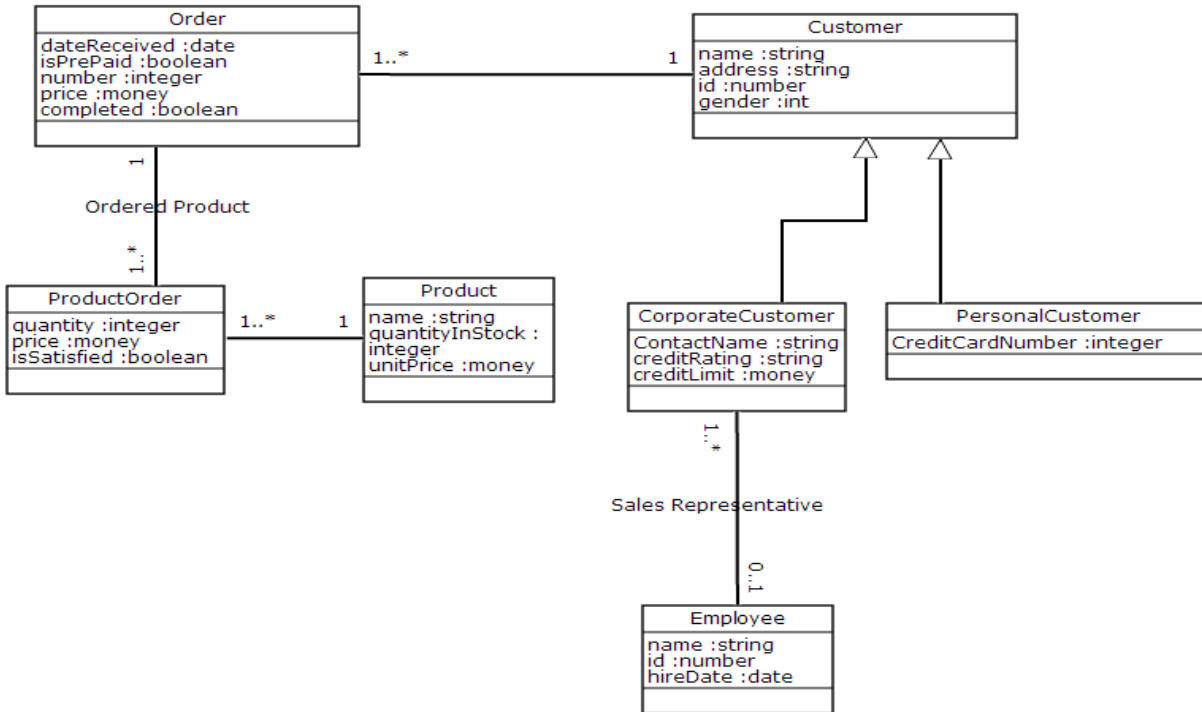


Assignment 4

ORM

Consider the following class diagram



Transform the given class diagram into **physical relational Model** (physical ERD) using ORM techniques explained in Lab and Lectures (**2 of inheritance techniques**)

Notes:

- Assignments will be delivered in starting on **5 April (According to your lab date)**.
- Assignment Copies will be given **ZERO**
- Assignments must be solved and handed individually
- Assignments will be delivered as **printed** copy.
- **No** softcopies/handwritten will be accepted.